

home spaces



home spaces

indice

index

il sistema the system

06 progettualità
about design

ambienti rooms

14 ingresso
entrance

40 soggiorno
living room

128 camera
bedroom

190 lavanderia
laundry

226 spazi utili
utility spaces

sezione tecnica technical section

264 finiture e colori
finishes and colours

266 tessuti
fabrics

270 maniglie
handles

280 contenitori
storage units

284 librerie
bookcases

288 sistema Uniko
Uniko system

290 boiserie
wall panelling

294 armadi
wardrobes

302 cabine
walk-in closets

306 letti
beds

324 gruppi letto
bedroom units

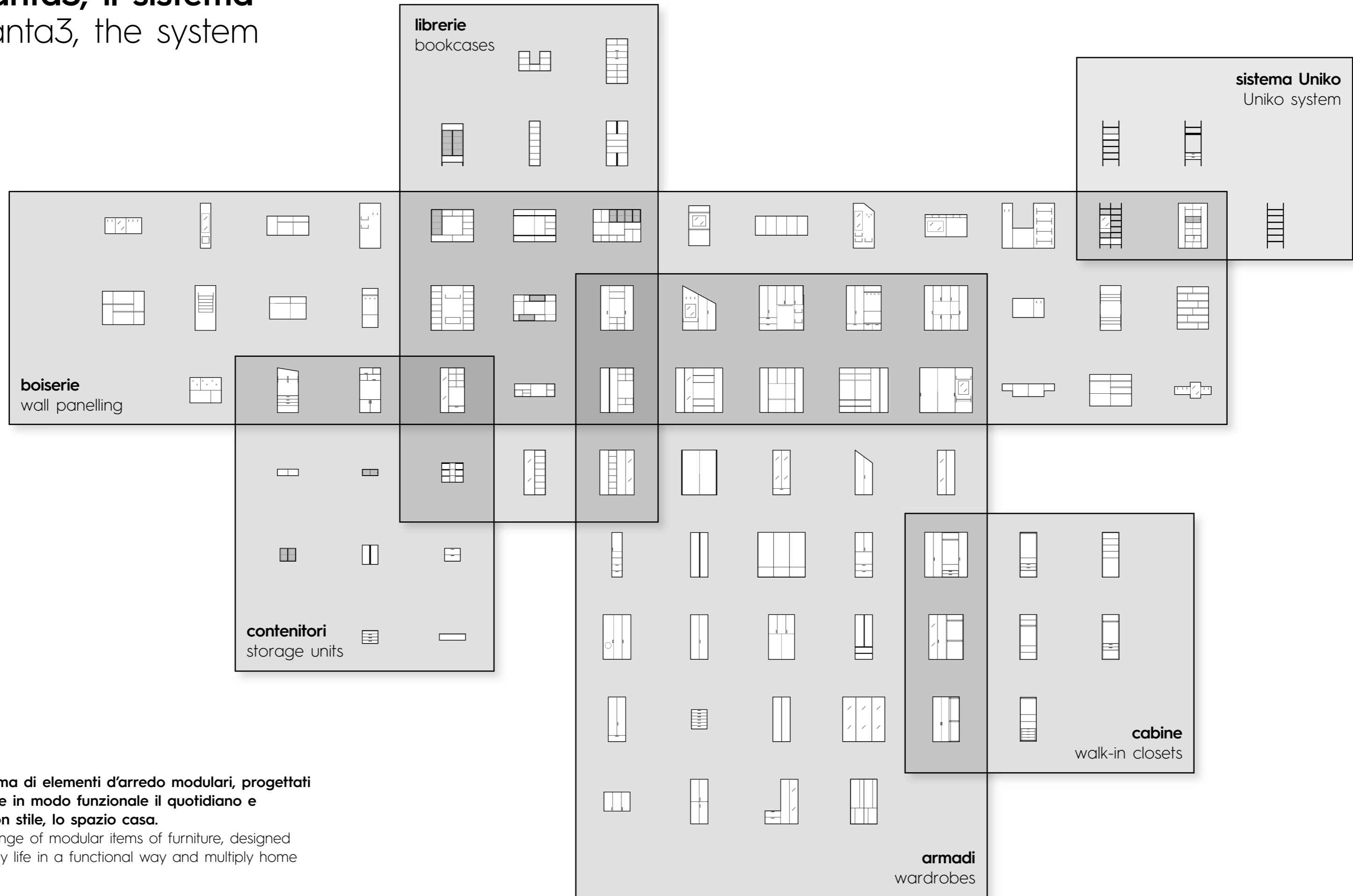
328 scrivanie
desks

336 tavoli e sedie
tables and chairs

il sistema
the system

Cinquanta3, il sistema

Cinquanta3, the system

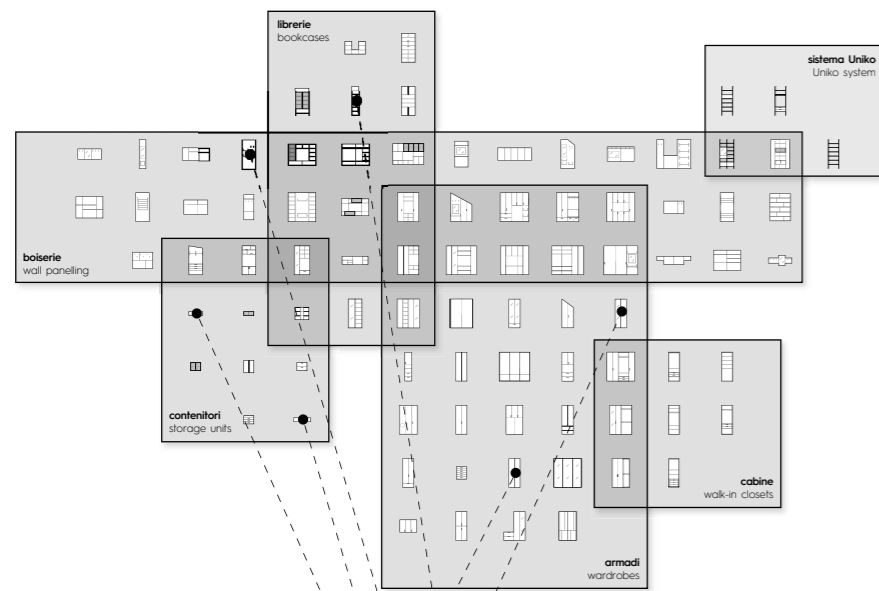


Un'ampia gamma di elementi d'arredo modulari, progettati per organizzare in modo funzionale il quotidiano e moltiplicare, con stile, lo spazio casa.

An extensive range of modular items of furniture, designed to organize daily life in a functional way and multiply home spaces stylishly.

Cinquanta3, il sistema

Cinquanta3, the system

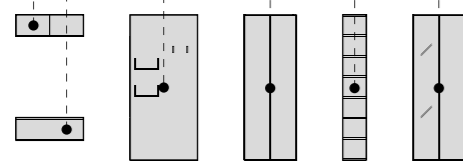


Progettare in libertà

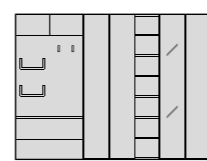
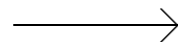
The freedom to design your way

La versatilità degli elementi permette massima libertà compositiva: il progetto d'arredo si fa interprete del vivere moderno, alla ricerca di soluzioni personalizzabili e funzionali, dal sapore quotidiano.

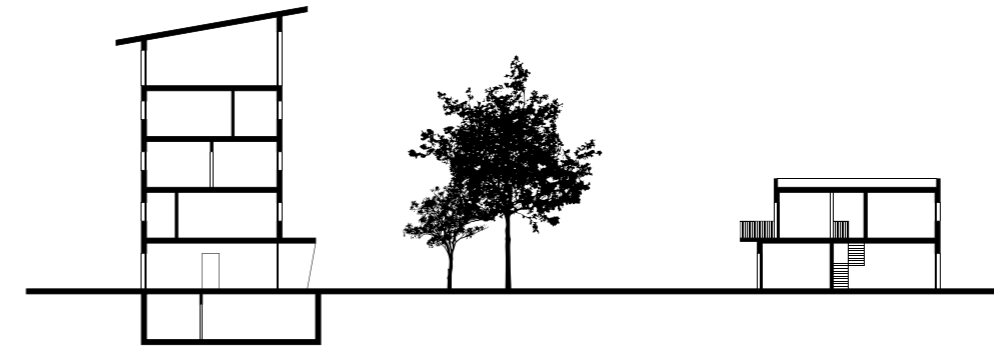
The versatility of the various elements gives the ultimate freedom to put your scheme together just the way you want: the interior's design embodies our modern lifestyle, in the pursuit of functional, customizable solutions, with an everyday feel.



singoli elementi del sistema
individual parts of the system



composizione finita
finished configuration



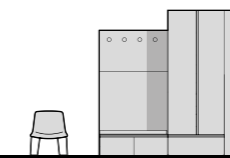
Ridefinire lo spazio casa

Redefining home spaces

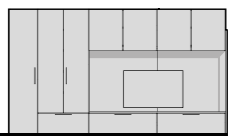
Ambienti organizzati che dialogano tra loro, grazie all'ampia gamma di elementi pensati per coesistere all'interno dello stesso progetto. La casa indossa gli abiti di chi la vive.

Organized interiors that share a connection with each other, thanks to the extensive range of elements designed to sit happily alongside each other within the same scheme. The home mirrors the style of its occupants.

Ingresso
Entrance



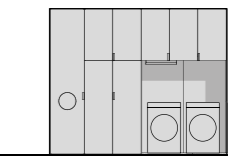
Soggiorno
Living room



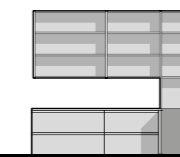
Camera
Bedroom



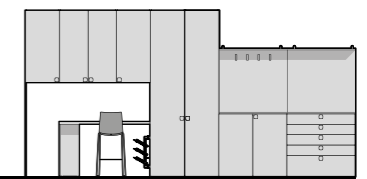
Lavanderia
Laundry



Dispensa
Pantry



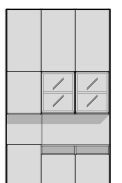
Garage
Garage



Ripostiglio
Walk-in cupboard

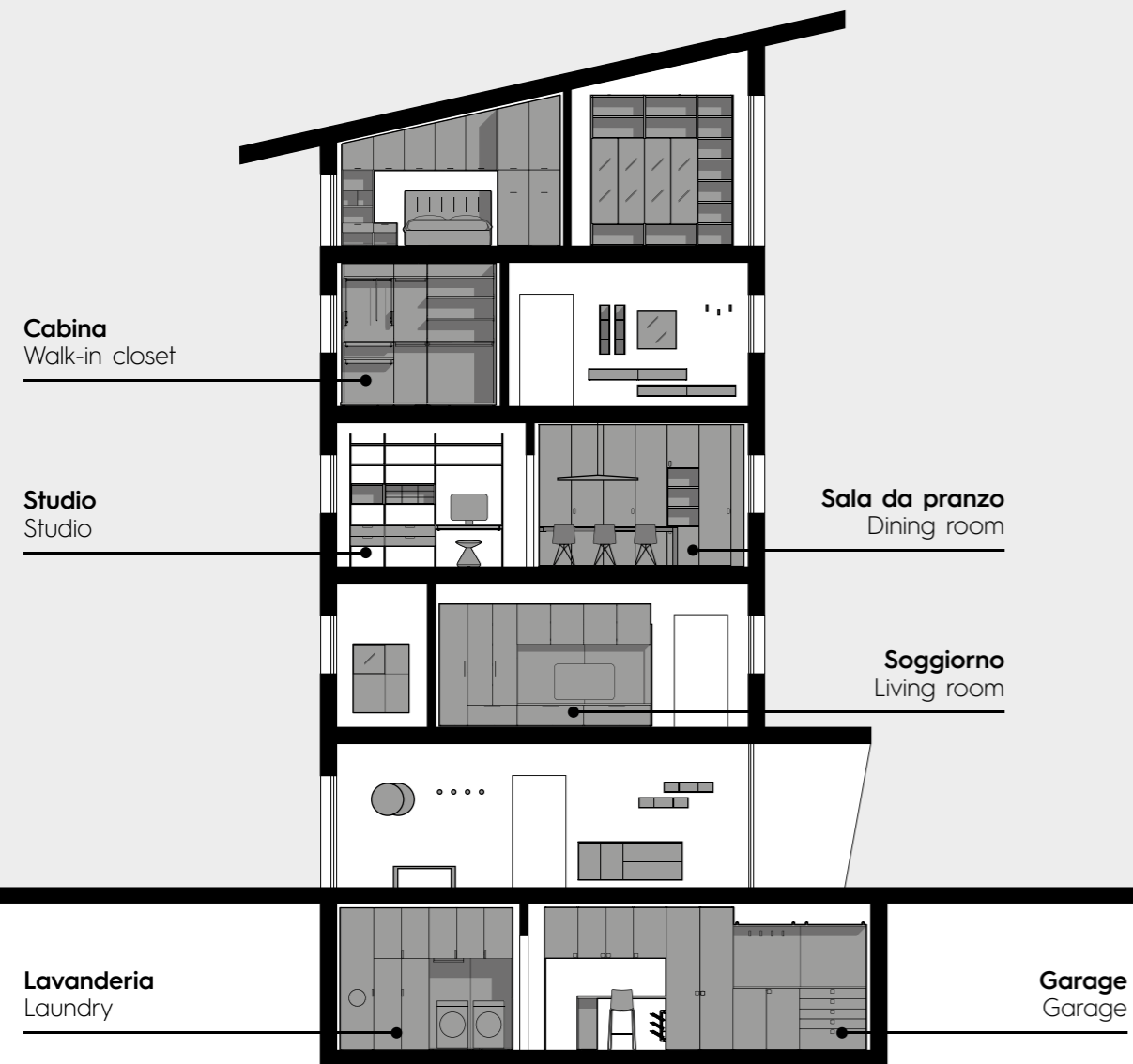


Disimpegno
Vestibule



Spazi razionali da vivere con passione

Rational spaces for you to
enjoy with a passion



Progettare uno spazio ottimale a misura di quotidiano, nel quale identificarsi e sentirsi a casa. Vestire gli ambienti di elementi contenitivi e decorativi, capaci di definire in modo intelligente e armonico l'intero progetto casa, interpretando le esigenze e lo spirito del vivere contemporaneo.

Designing an optimal space tailor made to accommodate daily life, a space to identify with and feel at home in. Decking out interiors with storage units and decorative elements, capable of bringing to life the whole interior design vision in a smart and harmonious way, interpreting the demands and spirit of our contemporary lifestyles.



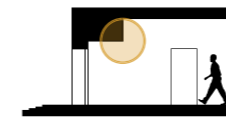
ambient
rooms

ambient
rooms

Non tutti gli ingressi sono uguali

Not all entrances are the same

ingresso con ribassamento / entrance with bulkhead



01a - pag. 16

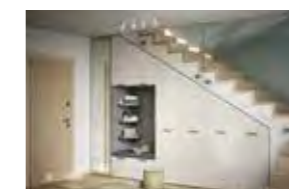
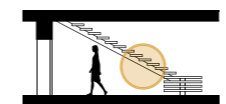


01b - pag. 20



01c - pag. 22

ingresso con scale / entrance with stairs



02a - pag. 24



02b - pag. 28

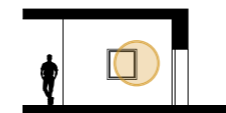


02c - pag. 30

Il sistema cinquanta3 permette di personalizzare la zona ingresso, ottimizzando gli spazi in base al progetto. La modularità delle composizioni risponde in modo efficace alle caratteristiche di ogni ambiente anche in presenza di vincoli architettonici come ribassamenti, scale o finestre.

The cinquanta3 system gives you the tools you need to put your personal stamp on the entry area, optimizing spaces based on its design. The configurations' modular design caters effectively to the individual quirks of each room, even when dealing with architectural constraints, such as bulkheads, stairs or windows.

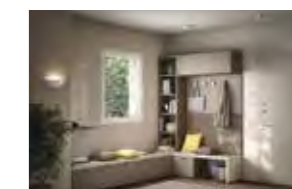
ingresso con finestra / entrance with window



03a - pag. 32



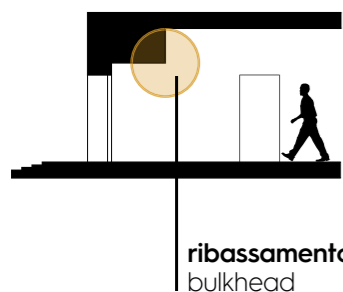
03b - pag. 36



03c - pag. 38

01a - 01b - 01c

Ingresso Entrance



Le diverse composizioni propongono soluzioni funzionali alla presenza di un ingresso con ribassamento. Sfruttare al meglio lo spazio, ridefinendo l'ambiente in base ai dettagli del progetto, grazie ad elementi dall'ampia modularità, capaci di vestire con stile ambienti abitativi differenti.

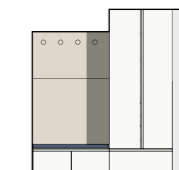
The different configurations offer functional solutions to deal with a bulkhead protruding into an entrance. Making the best use of space, redefining the interior based on its design details with the aid of elements featuring a modular design providing plenty of options, resolving different home spaces with a stylish fit out.





composizione ingresso
entrance configuration

L / W 265,5 cm
H / H 220,8 - 257,9 cm
P / D 61 cm



elementi / elements

boiserie Arnad / Arnad wall panelling
pomoli appendiabifi / clothes hanger knobs
basi armadio / wardrobe base units
seduta imbottita / padded seat
armadio battente / hinged door wardrobe
terminale libreria / bookcase end unit

finiture / finishes

bianco / bianco
frassino chiaro / frassino chiaro
specchio chiaro / light mirror
thick T522 / thick T522

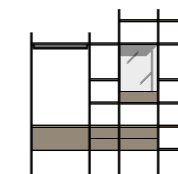


01a - **01b** - 01c
Ingresso
 Entrance



composizione ingresso
 entrance configuration

L / W 264 cm
 H / H 221,3 - 257,9 cm
 P / D 35,8 cm



elementi / elements

sistema Uniko / Uniko system

boiserie Arnad / Arnad wall panelling

specchio per boiserie / mirror for wall panelling

finiture / finishes

lavagna / lavagna

rovere cotto / rovere cotto

specchio chiaro / light mirror

sedie Sneek / Sneek chairs

J10, basamento R2 nero - pag. 343 / J10, black R2 base - page 343

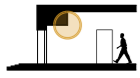
tavolo Corby / Corby table

rovere cotto, lavagna - pag. 337 / rovere cotto, lavagna - page 337

01a - 01b - 01c

Ingresso

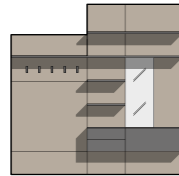
Entrance



composizione ingresso

entrance configuration

L / W 270 cm
H / H 220,5 - 267 cm
P / D 35,8 cm

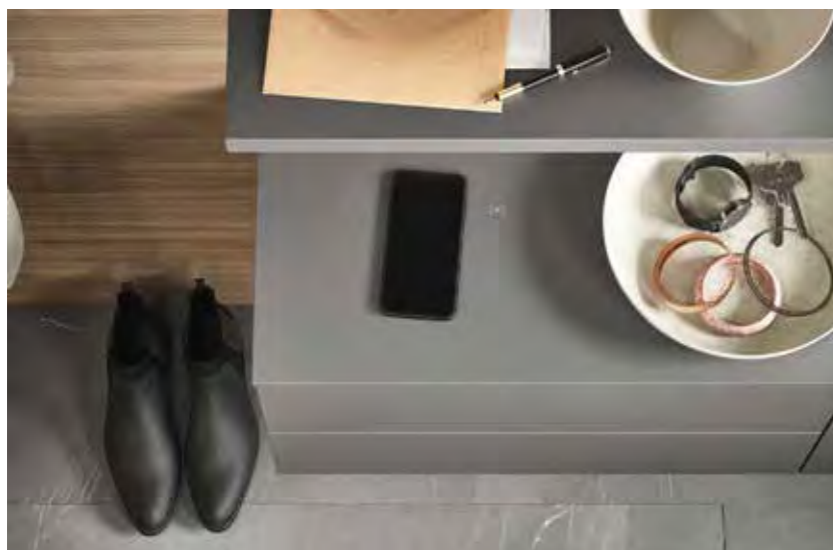


elementi / elements

boiserie Arnad / Arnad wall panelling
mensole sp. 3 cm / 3 cm-thick shelves
basi sospese / wall-mounted base units
ganci appendiabiti / coat hooks
specchio per boiserie / mirror for wall panelling

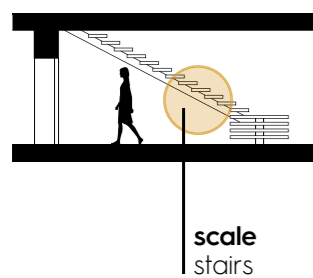
finiture / finishes

noce naturale / noce naturale
cemento / cemento
specchio chiaro / light mirror
brunito / bronze



02a - 02b - 02c

Ingresso Entrance



Progettare spazi intelligenti, studiati in modo organizzato: il sottoscala diventa parte integrante del progetto e si veste di elementi d'arredo funzionali e decorativi. Tre differenti composizioni, tre diversi modi di vivere il quotidiano.

Designing clever spaces with organization: the space under the stairs becomes an integral part of the design and accommodates functional and decorative items of furniture for a resolved look. Three different configurations, three different approaches to the needs of everyday life.

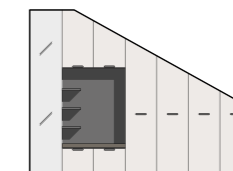


Ingresso
Entrance



composizione ingresso
entrance configuration

L / W 352,5 cm
H / H 98,5 - 257,9 cm
P / D 60,6 cm



elementi / elements

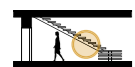
armadio battente / hinged door wardrobe
ripiani sagomati / shaped shelves
seduta imbottita / padded seat

finiture / finishes

calce / calce
cemento / cemento
specchio chiaro / light mirror
cross T513 / cross T513

02a - **02b** - 02c

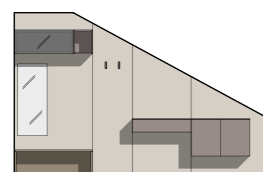
Ingresso



Entrance

composizione ingresso entrance configuration

L / W 390 cm
H / H 83 - 257,2 cm
P / D 49,1 cm

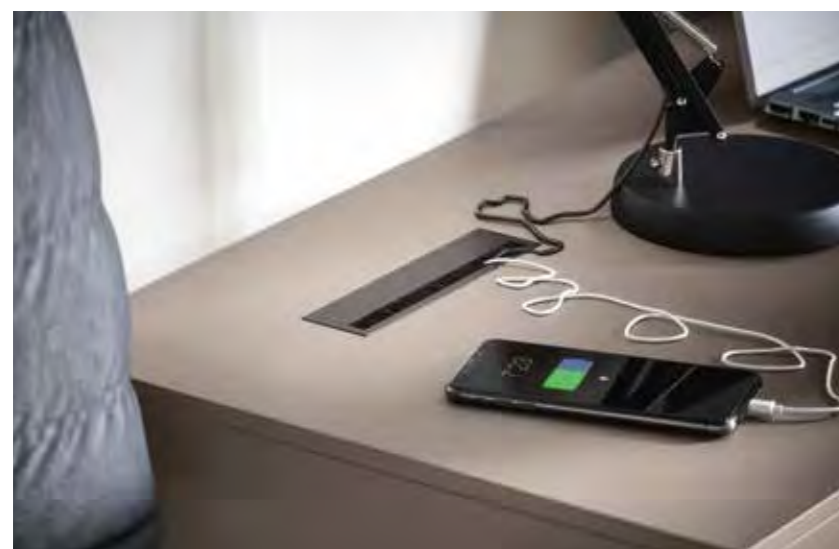


elementi / elements

boiserie Cover / Cover wall panelling
pensile / wall unit
casellario / shelving unit
specchio per boiserie / mirror for wall panelling
portavaligie / luggage shelf
ganci appendiabiti / coat hooks
basi sospese / wall-mounted base units

finiture / finishes

canapa / canapa
rovere cotto / rovere cotto
basalto / basalto
specchio chiaro / light mirror
vetro fumé / smoked glass
brunito / bronze

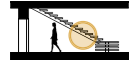


pouf Tokyo / Tokyo ottoman
TL34 - pag. 347 / TL34 - page 347



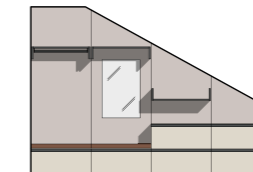
Ingresso
Entrance

02a - 02b - **02c**
Ingresso
 Entrance



composizione ingresso
 entrance configuration

L / W 360 cm
 H / H 100 - 257,2 cm
 P / D 64,3 cm



elementi / elements

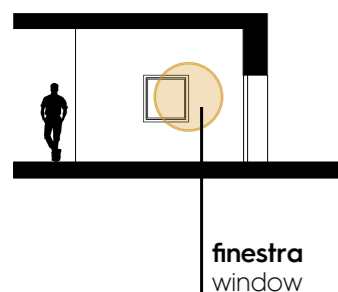
boiserie Cover / Cover wall panelling
componenti Cover / Cover components
basi a terra / floorstanding base units
seduta imbottita / padded seat
specchio per boiserie / mirror for wall panelling

finiture / finishes

cashmere / cashmere
frassino chiaro / frassino chiaro
lavagna / lavagna
soft T566 / soft T566
specchio chiaro / light mirror

03a - 03b - 03c

Ingresso Entrance



Grazie alla flessibilità compositiva degli elementi d'arredo, una parete con finestra diventa uno spazio strutturato. L'ingresso si trasforma, acquistando personalità e diventando un ambiente utile e funzionale, ma soprattutto piacevole da vivere.

With the various items of furniture offering modular flexibility, a wall with a window becomes a well-structured space. The entrance is transformed, packed with personality and turned into a useful and functional interior and, above all, a space you'll want to spend time in.



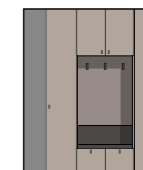
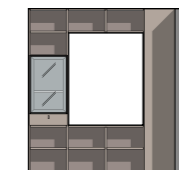
Ingresso
Entrance



composizione ingresso
entrance configuration

L / W 265,1 cm
H / H 257,9 cm
P / D 35,4 cm

L / W 208,1 cm
H / H 257,9 cm
P / D 35,4 cm



elementi / elements

libreria a terra e sospesa / floorstanding and wall-mounted bookcase
boiserie Arnad / Arnad wall panelling
seduta imbottita / padded seat
ganci appendiabiti / coat hooks

finiture / finishes

basalto / basalto
sabbia / sabbia
vetro acidato / etched glass
thick T524 / thick T524
brunito / bronze

sedia Sneek lounge / Sneek lounge chair
thick T524, nero - pag. 347
thick T524, black - page 347

03a - **03b** - 03c

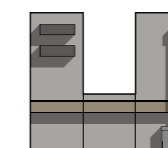
 **Ingresso**
Entrance



composizione ingresso
entrance configuration

L / W 273,6 cm
H / H 221,6 cm
P / D 49,1 cm

L / W 183,3 cm
H / H 221,6 cm
P / D 49,1 cm



elementi / elements

boiserie Cover / Cover wall panelling
mensole in metallo / metal shelves
basi sospese / wall-mounted base units
basi a terra / floorstanding base units
seduta imbottita / padded seat
ganci appendiabiti / coat hooks
specchio per boiserie / mirror for wall panelling

finiture / finishes

intonaco / intonaco
rovere colto / rovere colto
brunito / bronze
specchio chiaro / light mirror
spot T544 / spot T544
lavagna / lavagna

sedia Cannes / Cannes chair
TL30 - pag. 345 / TL30 - page 345

03a - 03b - 03c

Ingresso

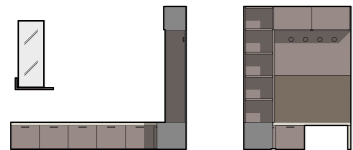
Entrance



composizione ingresso

entrance configuration

L / W 275,4 cm L / W 168,2 cm
 H / H 203 cm H / H 203 cm
 P / D 45,8 cm P / D 45,8 cm



elementi / elements

specchio / mirror
 mensola ad L / L-shaped shelf
 basi a terra / floorstanding base units
 piani in appoggio / sit-on-top tops
 libreria sovrapposta e sospesa
 sit-on-top and wall-mounted bookcase
 boiserie Arnad / Arnad wall panelling
 pomoli appendiabiti / clothes hanger knobs

finiture / finishes

basalto / basalto
 frassino chiaro / frassino chiaro
 specchio chiaro / light mirror
 spot T548 / spot T548



Ingresso
Entrance



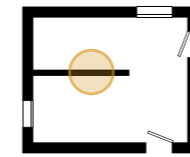
Un soggiorno razionale e personalizzato

A rational, tailor-made living room

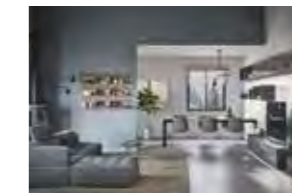
Il progetto d'arredo si integra e armonizza con l'ambiente, esaltandone le peculiarità. L'ampia gamma di elementi permette di personalizzare e adattare la composizione alle caratteristiche dei diversi spazi abitativi. Per sentirsi comodamente a casa.

The furniture scheme blends seamlessly and harmoniously with the interior, highlighting its distinctive features. The extensive range of elements means the configuration can be tailored to the features of the various home interiors. So you can feel right at home.

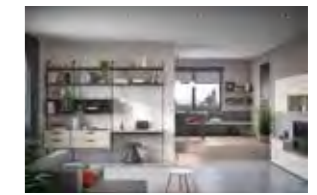
soggiorno con parete divisoria / living room with dividing wall



04a - pag. 42



04b - pag. 48



04c - pag. 52

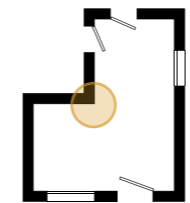


04d - pag. 58



04e - pag. 64

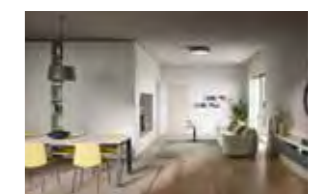
soggiorno ad angolo / corner living room



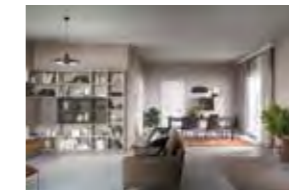
05a - pag. 68



05b - pag. 76

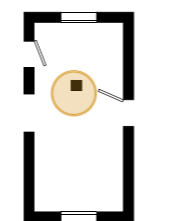


05c - pag. 82



05d - pag. 88

soggiorno con pilastro / living room with pillar



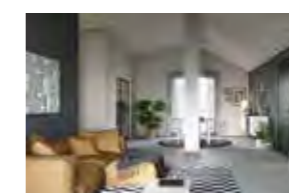
06a - pag. 94



06b - pag. 102

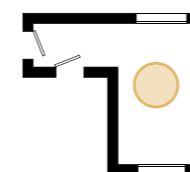


06c - pag. 106



06d - pag. 112

monocale / studio apartment



07a - pag. 118

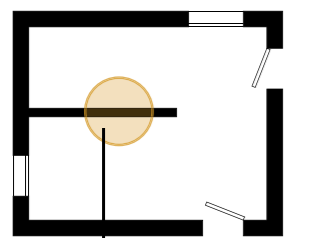


07b - pag. 124

04a - 04b - 04c - 04d - 04e

Soggiorno

Living room



parete divisoria
dividing wall

Progettare un angolo relax pensato per sfruttare al meglio la presenza di una parete divisoria. Una composizione che si adatta perfettamente all'ambiente e che risponde, con stile, alle esigenze funzionali del quotidiano.

Designing a chill-out space so that it makes the best use of a dividing wall. A configuration that adapts perfectly to the room and caters to the functional needs of everyday life with stylish flair.





parete attrezzata
wall system

L / W 385 cm
H / H 221,3 cm
P / D 61 cm



elementi / elements

armadio ponte con fianco metallico
bridging wardrobe with metal side panel
basi armadio / wardrobe base units
boiserie Arnad / Arnad wall panelling

finiture / finishes

cashmere / cashmere
noce naturale / noce naturale



madia sospesa
wall-mounted sideboard

L / W 228 cm
H / H 74,7 cm
P / D 35,4 cm



elementi / elements

libreria sospesa / wall-mounted bookcase

finiture / finishes

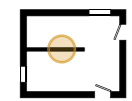
noce naturale / noce naturale
cashmere / cashmere

piano sospeso con alzata sp. 5 cm / 5 cm-thick wall-mounted top with upstand
noce naturale - pag. 332 / noce naturale - page 332

sgabelli Sneek / Sneek stools
J10, nero - pag. 346 / J10, black - page 346



04a - **04b** - 04c - 04d - 04e



Soggiorno

Living room



sedie Sneek imbottite / upholstered Sneek chairs
spot T544, basamento RI - pag. 343
spot T544, RI base - page 343

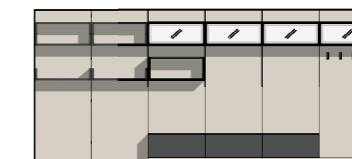
tavolo Corby a penisola / Corby peninsula table
noce naturale, lavagna - pag. 337
noce naturale, lavagna - page 337



tavolino Orig / Orig side table
lavagna - pag. 327 / lavagna - page 327

parete attrezzata
 wall system

L / W 540,6 cm
H / H 239,9 cm
P / D 48,8 cm



elementi / elements

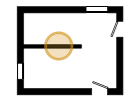
boiserie Cover / Cover wall panelling
componenti Cover / Cover components
pensili / wall units
basi in appoggio / sit-on-top base units
pedana h 5,7 cm / plinth H 5,7 cm
ganci appendiabiti / coat hooks

finiture / finishes

canapa / canapa
lavagna / lavagna
vetro trasparente / transparent glass
brunito / bronze



04a - 04b - **04c** - 04d - 04e



Soggiorno

Living room

parete attrezzata
wall system

L / W 270 cm
H / H 193 cm
P / D 45,8 cm



elementi / elements

basi a terra / floorstanding base units

pensili / wall units

casellari / shelving units

finiture / finishes

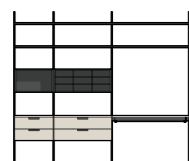
nuvola / nuvola

frassino chiaro / frassino chiaro



composizione home office
home office configuration

L / W 277,2 cm
H / H 239,6 cm
P / D 45,8 cm



elementi / elements
sistema Uniko / Uniko system

finiture / finishes

lavagna / lavagna
frassino chiaro / frassino chiaro



tavolino Orig / Orig side table
frassino chiaro, lavagna - pag. 327
frassino chiaro, lavagna - page 327

divano Madrid / Madrid sofa
spot T543, fettuccia a contrasto CC14 - pag. 348
spot T543, CC14 contrasting piping - page 348

pouf Tokyo / Tokyo ottoman
TL31 - pag. 347 / TL31 - page 347

mensole in metallo / metal shelves
lavagna / lavagna

sala da pranzo
dining room

L / W 360 cm
H / H 79,9 cm
P / D 45,8 cm



elementi / elements

boiserie Arnad / Arnad wall panelling
piani in appoggio / sit-on-top tops
basi a terra / floorstanding base units

finiture / finishes

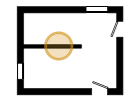
lavagna / lavagna
frassino chiaro / frassino chiaro
soff T564 / soff T564

sedie Sneek / Sneek chairs
J10, basamento R2 nero - pag. 342 / J10, black R2 base - page 342

tavolo Leone Large / Leone Large table
lavagna - pag. 336 / lavagna - page 336



04a - 04b - 04c - **04d** - 04e

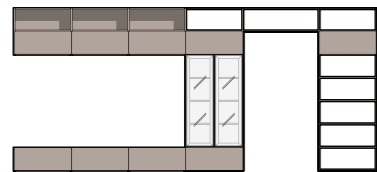


Soggiorno

Living room

parete attrezzata
wall system

L / W 573 cm
H / H 257,9 cm
P / D 47,4 cm



elementi / elements
libreria a terra e sospesa
floorstanding and wall-mounted bookcase

finiture / finishes
sabbia / sabbia
vetro trasparente / transparent glass
lavagna / lavagna





composizione ingresso
entrance configuration

L / W 120 cm
H / H 221,3 cm
P / D 45,8 cm



elementi / elements
portavaligie con schiena
luggage shelf with back panel
seduta imbottita / padded seat
ganci appendiabiti / coat hooks

finiture / finishes
rovere cotto / rovere cotto
cross T504 / cross T504
brunito / bronze



sedie Nerja / Nerja chairs
resta di moro - pag. 343 / dark brown - page 343
tavolo Leone Large / Leone Large table
rovere cotto, lavagna - pag. 336 / rovere cotto, lavagna - page 336



04a - 04b - 04c - 04d - **04e**

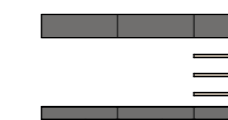
Soggiorno

Living room



parete attrezzata
wall system

L / W 330 cm
H / H 203 cm
P / D 45,8 cm



elementi / elements

pensili / wall units

mensole sp. 5 cm / 5 cm-thick shelves

basi sospese / wall-mounted base units

finiture / finishes

cemento / cemento

noce naturale / noce naturale

sedie Giant / Giant chairs

J21 - pag. 342 / J21 - page 342

piano scrivania sp. 5 cm con fianco

5 cm-thick desk top with side panel

noce naturale - pag. 328 / noce naturale - page 328



madia
sideboard

L / W 123 cm
H / H 111,5 cm
P / D 45,4 cm



elementi / elements

libreria con gambe metalliche
bookcase with metal legs

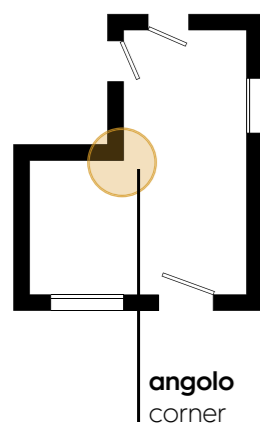
finiture / finishes

cemento / cemento
vetro acidato / etched glass
lavagna / lavagna



05a - 05b - 05c - 05d

Soggiorno Living room



La parete ad angolo trasforma la stanza in due ambienti distinti, dove trovano posto la zona relax e la sala da pranzo. La modularità degli elementi caratterizza le diverse composizioni e permette di personalizzare ogni progetto per renderlo unico.

The corner wall turns the room into two separate areas, housing the chill-out area and dining room respectively. The modular design of the various elements gives the different configurations their distinctive look and allows you to tailor each project to your individual needs, making each unique.





ganci appendiabiti / coat hooks
brunito - pag. 279 / **bronze** - page 279
mensole in metallo / metal shelves
nuvola / nuvola

composizione ingresso
 entrance configuration

L / W 270 cm
H / H 43,3 cm
P / D 45,8 cm



elementi / elements
basi a terra / floorstanding base units
piano in appoggio / sit-on-top top

finiture / finishes
nuvola / nuvola
frassino chiaro / frassino chiaro

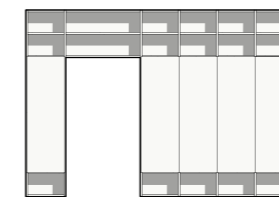




sedie Cork / Cork chairs
 J00 - pag. 342 / J00 - page 342
scrivania sp. 1,2 cm / 1,2 cm-thick desk
 bianco, frassino chiaro - pag. 334 / bianco, frassino chiaro - page 334

composizione libreria
 bookcase configuration

L / W 423 cm
 H / H 294,5 cm
 P / D 35,4 cm



elementi / elements
libreria a terra / floorstanding bookcase

finiture / finishes
 bianco / bianco

parete attrezzata
wall system

L / W 450 cm
H / H 215 cm
P / D 45,8 cm

L / W 213 cm
H / H 215 cm
P / D 58,2 cm



elementi / elements

basi sospese / wall-mounted base units

pensili / wall units

boiserie Arnad / Arnad wall panelling

mensole sp. 5 cm / 5 cm-thick shelves

casellari / shelving units

piano scrivania sp. 5 cm con fianco / 5 cm-thick desk top with side panel

finiture / finishes

nuvola / nuvola

intonaco / intonaco

frassino chiaro / frassino chiaro

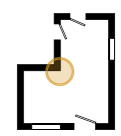
vetro fumé / smoked glass



sedia Cannes / Cannes chair
TL32 - pag. 345 / TL32 - page 345



05a - **05b** - 05c - 05d



Soggiorno

Living room



tavolo Corby a penisola / Corby peninsula table
noce naturale, bianco - pag. 337
noce naturale, bianco - page 337

sedie Sneek imbottite / upholstered Sneek chairs
thick T526, basamento R1 - pag. 343
thick T526, R1 base - page 343



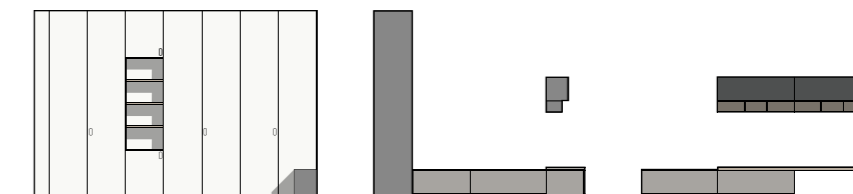
sedia Sneek lounge / Sneek lounge chair
 cross T502, nero - pag. 347 / cross T502, black - page 347

parete attrezzata
 wall system

L / W 445 cm
 H / H 294,5 cm
 P / D 60,6 cm

L / W 332 cm
 H / H 294,5 cm
 P / D 35,8 cm

L / W 360 cm
 H / H 190 cm
 P / D 61 cm



elementi / elements

- armadio battente** / hinged door wardrobe
- basi in appoggio** / sit-on-top base units
- pedana h 5,7 cm** / plinth H 5,7 cm
- piano in appoggio** / sit-on-top top
- pensili** / wall units
- casellari Zip12** / Zip12 shelving units

finiture / finishes

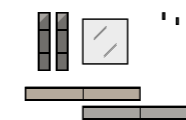
- bianco** / bianco
- intonaco** / intonaco
- noce naturale** / noce naturale
- lavagna** / lavagna





composizione ingresso
entrance configuration

L / W 270 cm
H / H 167,5 cm
P / D 35,8 cm



elementi / elements

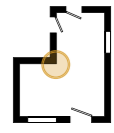
basi sospese / wall-mounted base units
casellari Zip12 / Zip12 shelving units
specchio / mirror
ganci appendiabiti / coat hooks

finiture / finishes

intonaco / intonaco
noce naturale / noce naturale
brunito / bronze



05a - 05b - **05c** - 05d



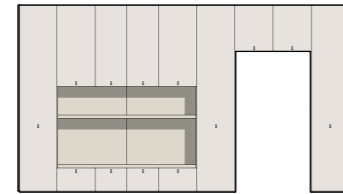
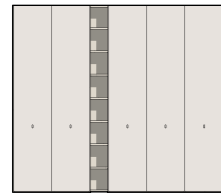
Soggiorno

Living room

parete attrezzata
wall system

L / W 332,4 cm
H / H 294,5 cm
P / D 61 cm

L / W 522,6 cm
H / H 294,5 cm
P / D 61 cm



elementi / elements

armadio battente / hinged door wardrobe
libreria a terra / floorstanding bookcase
armadio ponte / bridging wardrobe
mensola sp. 5 cm / 5 cm-thick shelf
piano in appoggio / sit-on-top top
boiserie Arnad / Arnad wall panelling
basi armadio / wardrobe base units

finiture / finishes

nuvola / nuvola
frassino chiaro / frassino chiaro





madia
sideboard

L / W 180 cm
H / H 57 cm
P / D 35,8 cm

elementi / elements
basi sospese / wall-mounted base units

finiture / finishes
lavagna / lavagna
vetro acidato / etched glass

tavolino Anversa / Anversa occasional table
lavagna, frassino chiaro - pag. 341 / lavagna, frassino chiaro - page 341
casellari Zip12 / Zip12 shelving units
nuvola / nuvola



Soggiorno
Living room



composizione ingresso
entrance configuration

L / W 180 cm
H / H 47,6 cm
P / D 35,8 cm



elementi / elements

piano sospeso con alzata sp. 5 cm
5 cm-thick wall-mounted top with upstand
basi sospese / wall-mounted base units

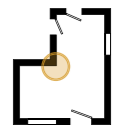
finiture / finishes

frassino chiaro / frassino chiaro
lavagna / lavagna

tavolo Corby / Corby table
frassino chiaro, lavagna - pag. 337
frassino chiaro, lavagna - page 337

sedie Sneek imbottite / upholstered Sneek chairs
spot T551, basamento R2 nero - pag. 343
spot T551, black R2 base - page 343

05a - 05b - 05c - **05d**



Soggiorno

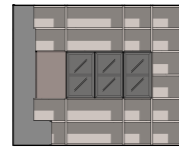
Living room

parete attrezzata
wall system

L / W 445,1 cm
H / H 221,3 cm
P / D 61 cm



L / W 265,1 cm
H / H 221,3 cm
P / D 35,2 cm



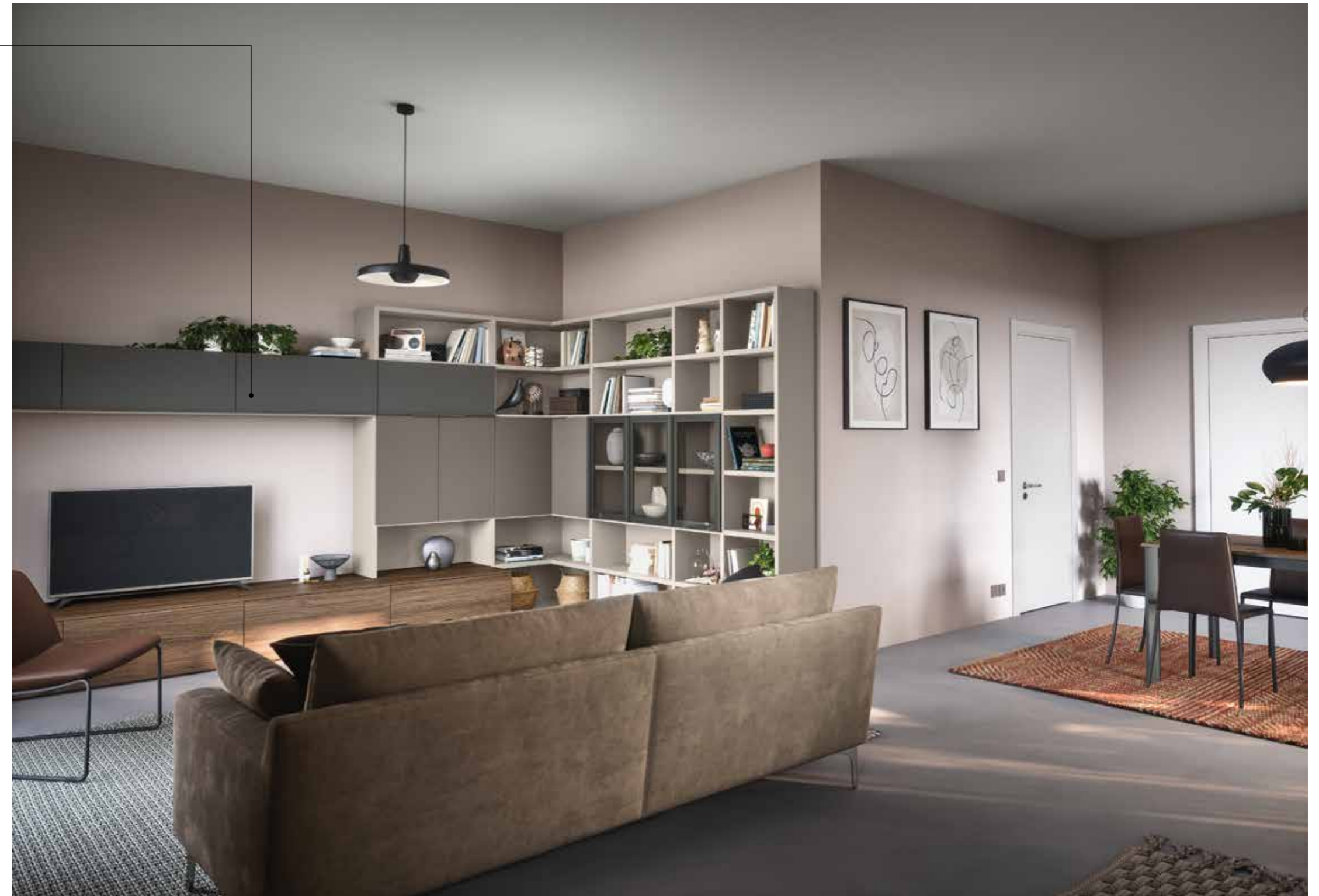
elementi / elements

libreria a terra, sospesa e sovrapposta
floorstanding, wall-mounted and sit-on-top bookcase
basi a terra
floorstanding base units

finiture / finishes

cashmere / cashmere
basalto / basalto
lavagna / lavagna
rovere cotto / rovere cotto
vetro fumé / smoked glass

sedia Sneek lounge / Sneek lounge chair
smooth T172, nero - pag. 347 / smooth T172, black - page 347



sedie Nerja / Nerja chairs
testa di moro - pag. 343 / dark brown - page 343

tavolo Nizza Large / Nizza Large table
rovere cotto, lavagna - pag. 338 / rovere cotto, lavagna - page 338



madia
sideboard

L / W 105,3 cm
H / H 129,3 cm
P / D 35,8 cm



elementi / elements
pensili / wall units

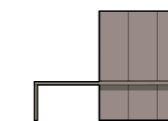
finiture / finishes

cashmere / cashmere
vetro fumé / smoked glass
lavagna / lavagna



composizione ingresso
entrance configuration

L / W 240 cm
H / H 172,9 cm
P / D 45,8 cm



elementi / elements

libreria a terra e sospesa
floorstanding and wall-mounted bookcase
piano in appoggio / sit-on-top top

finiture / finishes

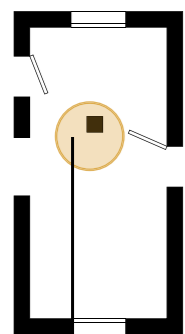
basalto / basalto
rovere cotto / rovere cotto



06a - 06b - 06c - 06d

Soggiorno

Living room



pilastro
pillar

La presenza di un pilastro nella zona giorno permette di suddividere l'ambiente, mantenendo la luminosità e lo stile contemporaneo che caratterizzano gli open space. Progettare in libertà si può, grazie all'ampia gamma di elementi e finiture.

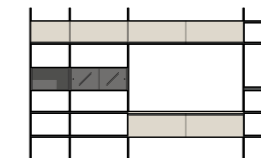
Having a pillar in the living space provides an opportunity to divide up the room, while still allowing light to flow through and retaining the contemporary style associated with an open-plan design. With an extensive range of elements and finishes to choose from, there's nothing to hold back your design creativity.





parete attrezzata
wall system

L / W 384 cm
H / H 239,6 cm
P / D 45,8 cm



elementi / elements

sistema Uniko / Uniko system
basi sospese / wall-mounted base units
pensili / wall units

finiture / finishes

frassino chiaro / frassino chiaro
lavagna / lavagna
vetro fumé / smoked glass



composizione ingresso
entrance configuration

L / W 180 cm	L / W 210 cm
H / H 47,3 cm	H / H 77,9 cm
P / D 35,8 cm	P / D 46,6 cm



elementi / elements

basi a terra / floorstanding base units
seduta imbottita / padded seat

finiture / finishes

frassino chiaro / frassino chiaro
cemento / cemento
cross T515 / cross T515



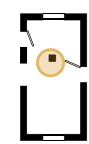


mensole sp. 3 cm / 3 cm-thick shelves
cemento / cemento

sedie Sneek imbottite / upholstered Sneek chairs
spot T553, basamento R1 - pag. 343
spot T553, R1 base - page 343

tavolo Nizza Large / Nizza Large table
bianco - pag. 338 / bianco - page 338

06a - **06b** - 06c - 06d



Soggiorno

Living room

parete attrezzata
wall system

L / W 360 cm
H / H 185,2 cm
P / D 45,8 cm



elementi / elements

pensili / wall units
casellari / shelving units
boiserie Arnad / Arnad wall panelling
mensola sp. 5 cm / 5 cm-thick shelf
basi sospese / wall-mounted base units

finiture / finishes

cashmere / cashmere
noce naturale / noce naturale

sedia Sneek lounge / Sneek lounge chair
soft T566, nero - pag. 347
soft T566, black - page 347



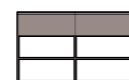


sedie Nerja / Nerja chairs
 testa di moro - pag. 343 / dark brown - page 343

tavolo Corby / Corby table
 noce naturale, lavagna - pag. 337
 noce naturale, lavagna - page 337

composizione ingresso
 entrance configuration

L / W 183 cm
 H / H 111,5 cm
 P / D 37,4 cm



elementi / elements
libreria a terra
 floorstanding bookcase

finiture / finishes
basalto / basalto



sala da pranzo
 dining room

L / W 120 cm
 H / H 221,3 cm
 P / D 45,8 cm

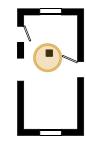


elementi / elements
pensili / wall units
basi a terra / floorstanding base units

finiture / finishes
basalto / basalto
vetro trasparente / transparent glass
lavagna / lavagna



06a - 06b - **06c** - 06d



Soggiorno
Living room



parete attrezzata
wall system

L / W 390 cm
H / H 112 cm
P / D 45,8 cm



elementi / elements

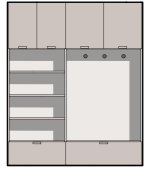
pannello porta TV / TV mounting panel
basi sospese / wall-mounted base units
pensili / wall units

finiture / finishes

cashmere / cashmere
calce / calce
rovere cotto / rovere cotto
vetro trasparente / transparent glass
lavagna / lavagna

composizione ingresso
entrance configuration

L / W 243 cm
H / H 257,9 cm
P / D 35,4 cm



elementi / elements

libreria a terra / floorstanding bookcase
pomoli appendiabiti / clothes hanger knobs

finiture / finishes

cashmere / cashmere
calce / calce
rovere cotto / rovere cotto

tavolino Orig / Orig side table
rovere cotto, cashmere - pag. 327
rovere cotto, cashmere - page 327



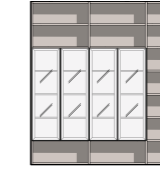


casellari Zip12 / Zip12 shelving units
rovere cotto / rovere cotto

composizione libreria
 bookcase configuration

L / W 243 cm
 H / H 257,9 cm
 P / D 45,4 cm

elementi / elements
libreria a terra / floorstanding bookcase



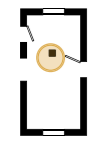
finiture / finishes
cashmere / cashmere
vetro trasparente / transparent glass
lavagna / lavagna



sedie Sneek / Sneek chairs
J23, basamento R2 bianco - pag. 342 / J23, white R2 base - page 342

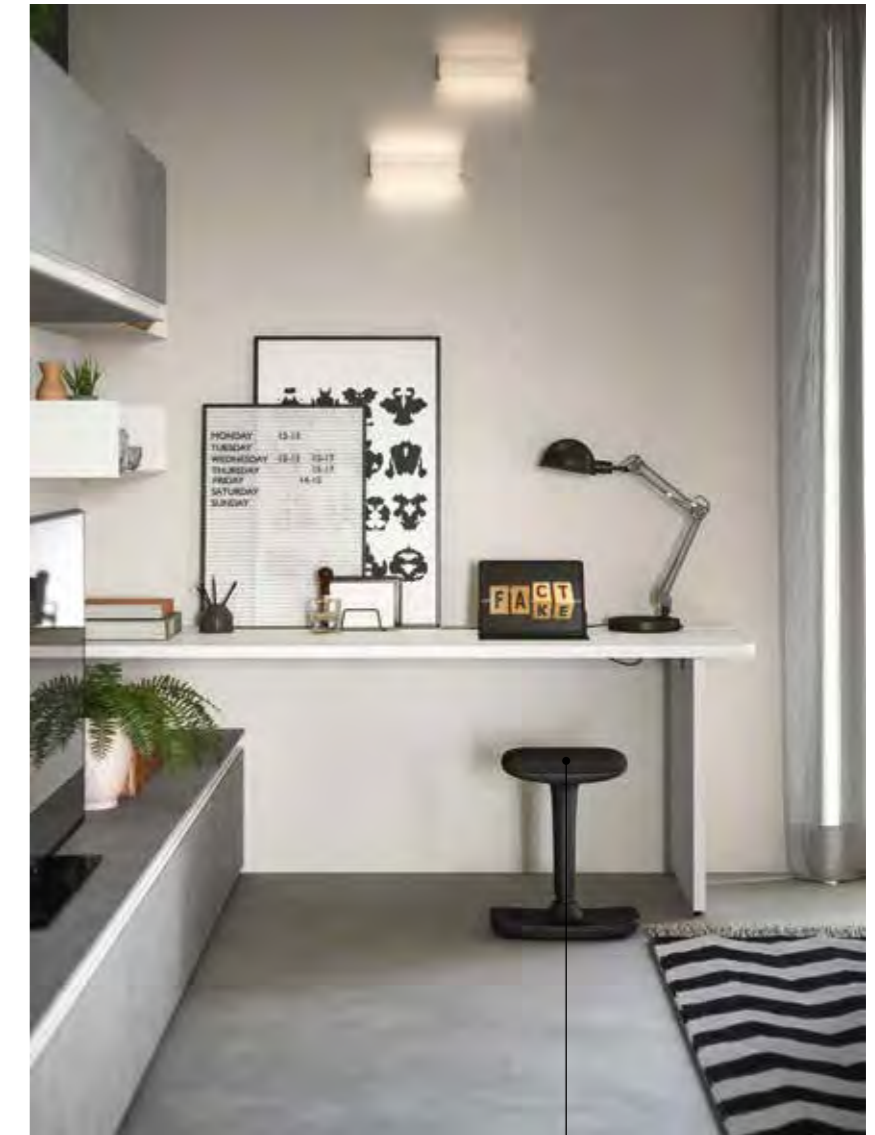
tavolo Vigo / Vigo table
vetro bianco, bianco - pag. 339 / white glass, bianco - page 339

06a - 06b - 06c - **06d**



Soggiorno

Living room



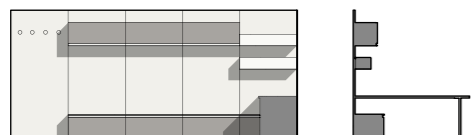
sgabello Harlem / Harlem stool
TL32 - pag. 346 / TL32 - page 346

comodino con ripiano / bedside table with shelf
olmo shade / olmo shade

parete attrezzata
wall system

L / W 450,6 cm
H / H 203,3 cm
P / D 48,4 cm

L / W 180 cm
H / H 68 cm
P / D 60 cm



elementi / elements

pensili / wall units
mensole in metallo / metal shelves
basi a terra / floorstanding base units
piano scrivania sp. 3 cm con fianco
3 cm-thick desk top with side panel
boiserie Cover / Cover wall panelling
pomoli appendiabiti / clothes hanger knobs

finiture / finishes

olmo shade / olmo shade
intonaco / intonaco
bianco / bianco



madia sospesa
wall-mounted sideboard

L / W 225 cm
H / H 57,1 cm
P / D 45,8 cm



elementi / elements

basi sospese / wall-mounted base units

finiture / finishes

olmo shade / olmo shade

vetro fumé / smoked glass

lavagna / lavagna

sedie Nerja / Nerja chairs
bianco - pag. 343 / white - page 343

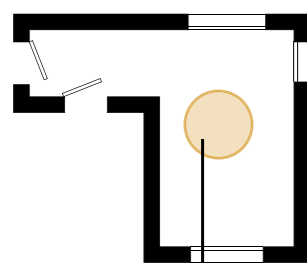
scrivania sp. 1,2 e ø 145 cm / desk 1,2 cm thick and ø 145 cm
intonaco, bianco - pag. 334 / intonaco, bianco - page 334



07a - 07b

Soggiorno

Living room



monocale
studio apartment

Spazi condivisi e intimi convivono anche nelle piccole metrature. La flessibilità delle composizioni permette di sfruttare in modo ingegnoso gli spazi del monocale, senza rinunciare allo stile e alla personalizzazione delle finiture.

Shared, intimate spaces sit happily alongside each other even within a small floorplan. The flexibility of the configurations allows you to make clever use of the studio apartment's spaces, without skimping on style or custom finishes.

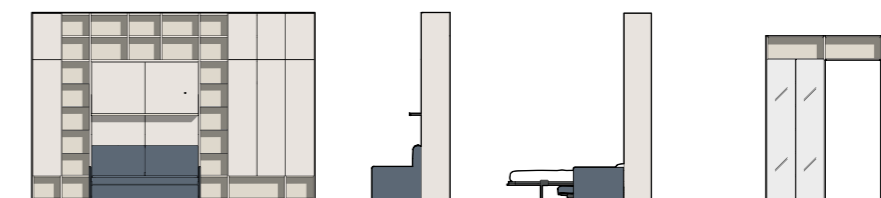




parete attrezzata
wall system

L / W 445,6 cm
H / H 294,5 cm
P / D 122 - 219 cm

L / W 213 cm
H / H 257,9 cm
P / D 35,4 cm



elementi / elements

libreria a terra / floorstanding bookcase

libreria con letto ribaltabile, divano e mensola / bookcase with drop-down bed, sofa and shelf
cuscini per pannello / panel cushions

finiture / finishes

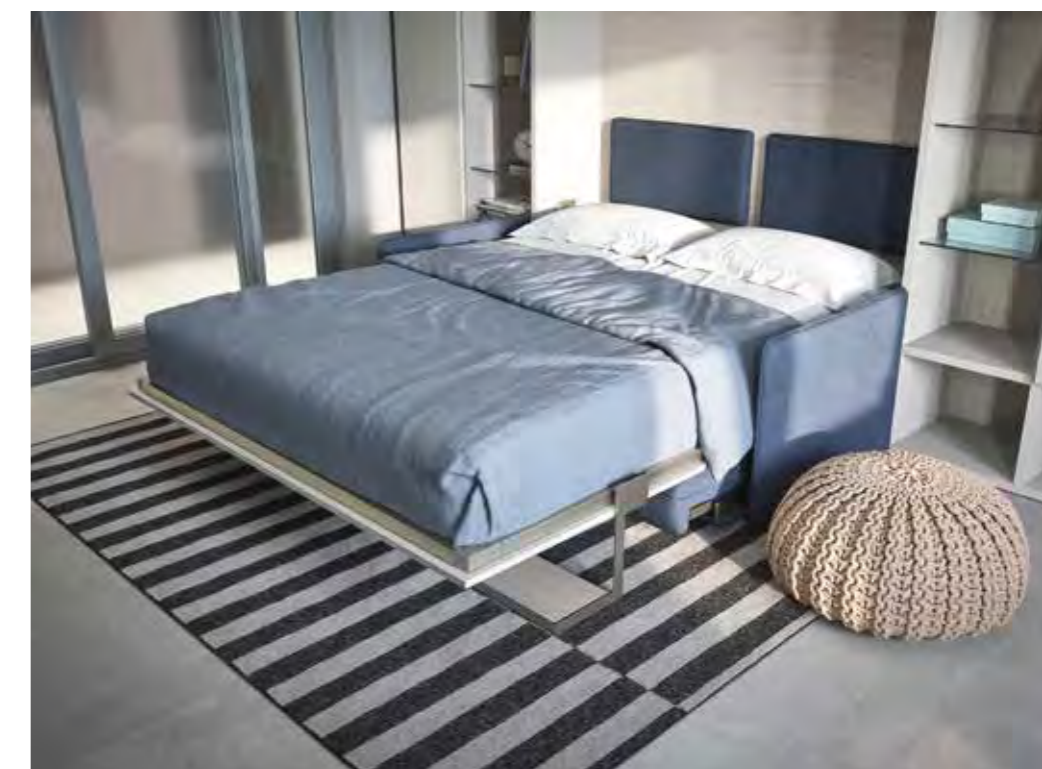
nuvola / nuvola

frassino chiaro / frassino chiaro

specchio chiaro / light mirror

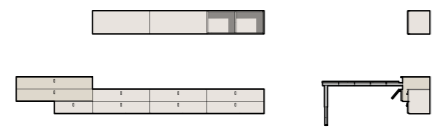
thick T522 / thick T522

bianco / bianco



parete attrezzata
wall system

L / W 390 cm
H / H 108,6 cm
P / D 45,8 - 169,4 cm



elementi / elements

base sospesa con tavolo estraibile / wall-mounted base unit with pull-out table

pensili / wall units

casellario / shelving unit

basi sospese / wall-mounted base units

finiture / finishes

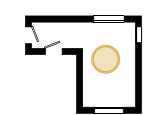
nuvola / nuvola

frassino chiaro / frassino chiaro

sedie Sneek / Sneek chairs
J00, basamento R2 bianco - pag. 342
J00, white R2 base - page 342



07a - **07b**



Soggiorno

Living room

composizione ingresso

entrance configuration

L / W 180 cm
H / H 194 cm
P / D 35,8 cm



elementi / elements

boiserie Arnad / Arnad wall panelling
ganci appendiabiti / coat hooks
specchio per boiserie / mirror for wall panelling
basi a terra / floorstanding base units

finiture / finishes

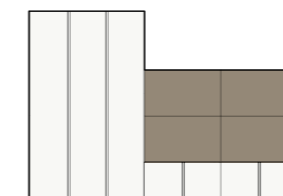
calce / calce
rovere cotto / rovere cotto
brunito / bronze



parete attrezzata

wall system

L / W 422,5 cm
H / H 294,5 cm
P / D 61 cm



elementi / elements

armadio battente / hinged door wardrobe
boiserie Arnad / Arnad wall panelling
basi armadio / wardrobe base units

finiture / finishes

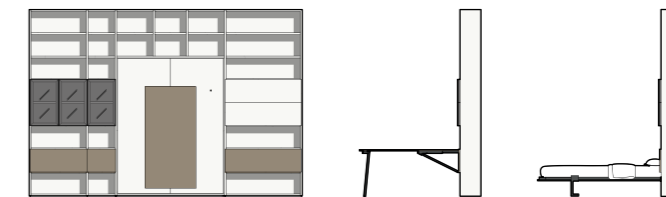
bianco / bianco
rovere cotto / rovere cotto





composizione libreria
bookcase configuration

L / W 430,6 cm
H / H 294,5 cm
P / D 40 - 193 - 219 cm



elementi / elements

libreria a terra / floorstanding bookcase
libreria con letto ribaltabile con tavolo / bookcase with drop-down bed with table

finiture / finishes

bianco / bianco
rovere cotto / rovere cotto
vetro fumé / smoked glass
lavagna / lavagna

sedie Giant / Giant chairs
J00 - pag. 342 / J00 - page 342

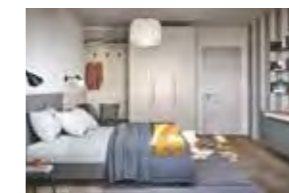
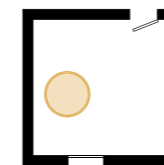
Personalizzare la camera da letto valorizzando lo spazio

Add a personal touch to a bedroom, making the most of the space

La camera si trasforma in un ambiente confortevole dove ogni elemento trova la giusta collocazione. La modularità delle composizioni arricchisce il progetto della stanza da letto, anche in presenza di particolari caratteristiche architettoniche.

The bedroom is transformed into a comfortable room where each element is perfectly placed. The configurations' modular design enhances the bedroom layout, even when working around specific architectural features.

camera / bedroom



08a - pag. 130



08b - pag. 136



08c - pag. 140

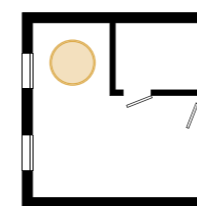


08d - pag. 144



08e - pag. 148

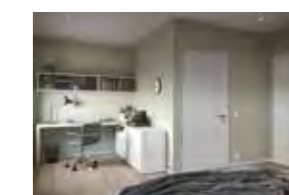
camera con nicchia / bedroom with recess



09a - pag. 152

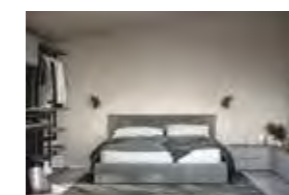
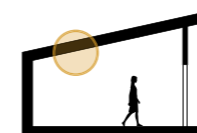


09b - pag. 158



09c - pag. 162

camera mansardata / attic bedroom



10a - pag. 166

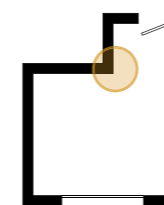


10b - pag. 170



10c - pag. 172

camera ad angolo / corner bedroom



11a - pag. 176



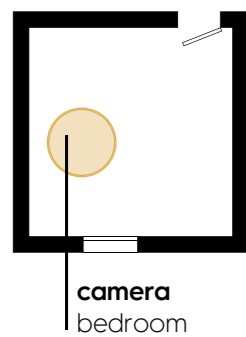
11b - pag. 182



11c - pag. 186

08a - 08b - 08c - 08d - 08e

Camera Bedroom



Gli elementi d'arredo trasformano lo spazio e definiscono in modo personale lo stile della camera da letto. Un progetto coordinato che strizza l'occhio alla razionalità mantenendo l'intimità della zona notte.

Items of furniture transform the space and put a personal stamp on the style of the bedroom. A coordinated design that gives a nod to rationality while ensuring the bedroom still feels cosy and private.



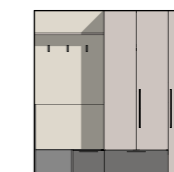


Turca R180 stonato / rounded R180 platform bed
cemento - pag. 309 / cemento - page 309

composizione armadio
 wardrobe configuration

L / W 500 cm
 H / H 109,8 cm
 P / D 211,4 cm

L / W 262,3 cm
 H / H 257,9 cm
 P / D 61 cm



elementi / elements

- boiserie Arnad** / Arnad wall panelling
- armadio battente** / hinged door wardrobe
- basi armadio** / wardrobe base units
- mensola sp. 3 cm** / 3 cm-thick shelf
- ganci appendiabiti** / coat hooks

finiture / finishes

- cashmere** / cashmere
- cemento** / cemento
- frassino chiaro** / frassino chiaro
- brunito** / bronze
- cross T513** / cross T513

mensole in metallo / metal shelves
lavagna / lavagna

composizione home office
home office configuration

L / W 300 cm
H / H 799 cm
P / D 61 cm



elementi / elements

basi sospese / wall-mounted base units
piano in appoggio / sit-on-top top

finiture / finishes

cemento / cemento
frassino chiaro / frassino chiaro



pouf Tokyo / Tokyo ottoman
TL32 - pag. 347 / TL32 - page 347

08a - **08b** - 08c - 08d - 08e



Camera
Bedroom

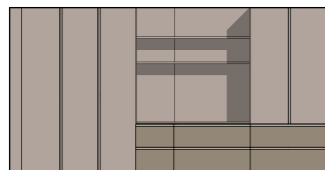


comodino Parigi / Parigi bedside table
sabbia, rovere cotto - pag. 326 / sabbia, rovere cotto - page 326

letto Zurigo R18Z stondato / rounded R18Z Zurigo bed
rovere colto - pag. 313 / rovere colto - page 313

composizione armadio
wardrobe configuration

L / W 500 cm
H / H 257,9 cm
P / D 60,6 cm



elementi / elements

armadio battente / hinged door wardrobe
basi armadio / wardrobe base units
boiserie Arnad / Arnad wall panelling
mensole sp. 3 cm / 3 cm-thick shelves

finiture / finishes

sabbia / sabbia
rovere cotto / rovere cotto



08a - 08b - **08c** - 08d - 08e



Camera Bedroom

letto Boston / Boston bed
soft T565, lavagna, fettuccia a contrasto CC10 - pag. 314
soft T565, lavagna, CC10 contrasting piping - page 314



comodino
bedside table

L / W 120 cm
H / H 43,5 cm
P / D 45,8 cm



elementi / elements

basi sospese / wall-mounted base units
boiserie Arnad / Arnad wall panelling
pedana h 3,7 cm / plinth H 3,7 cm

finiture / finishes

lavagna / lavagna

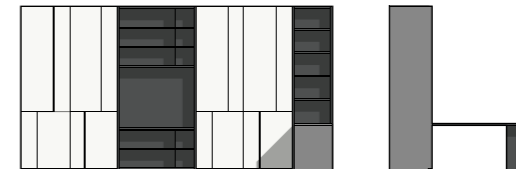




composizione armadio
wardrobe configuration

L / W 491 cm
H / H 257,9 cm
P / D 65,4 cm

L / W 220,4 cm
H / H 257,9 cm
P / D 60 cm



elementi / elements

armadio scorrevole / sliding door wardrobe

libreria a terra / floorstanding bookcase

elementi Sudoku / Sudoku units

piano scrivania sp. 3 cm con fianco / 3 cm-thick desk top with side panel

finiture / finishes

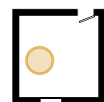
bianco / bianco

lavagna / lavagna

sedia Cannes / Cannes chair
TL36 - pag. 345 / TL36 - page 345



08a - 08b - 08c - **08d** - 08e



Camera Bedroom

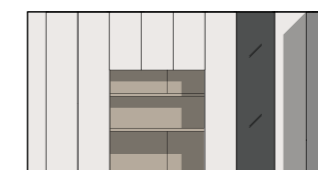


sedia Sneek imbottita / upholstered Sneek chair
smooth T167, basamento R2 bianco - pag. 343
smooth T167, white R2 base - page 343

composizione armadio wardrobe configuration

L / W 500 cm
H / H 257,9 cm
P / D 60,6 cm

L / W 256 cm
H / H 257,9 cm
P / D 60,6 cm



elementi / elements

armadi battenti / hinged door wardrobes

armadio ponte / bridging wardrobe

boiserie Arnad / Arnad wall panelling

mensola sp. 5 cm / 5 cm-thick shelf

piano sospeso con alzata sp. 5 cm / 5 cm-thick wall-mounted top with upstand

terminale trapezio / trapezium end unit

finiture / finishes

calce / calce

noce naturale / noce naturale

bianco / bianco

specchio brunito / tinted mirror



tavolino Orig / Orig side table
noce naturale, bianco - pag. 327
noce naturale, bianco - page 327

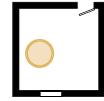
letto Thika / Thika bed
thick T528 - pag. 316 / thick T528 - page 316

comodino Atene / Atene bedside table
noce naturale - pag. 324 / noce naturale - page 324



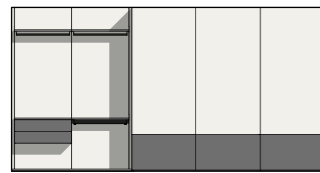
08a - 08b - 08c - 08d - **08e**

Camera Bedroom



composizione armadio
wardrobe configuration

L / W 491,6 cm
H / H 257,9 cm
P / D 65,4 cm



elementi / elements

cabina cremagliera / slotted rail walk-in closet
armadio scorrevole / sliding door wardrobe
pedana h 3,7 cm / plinth H 3,7 cm

finiture / finishes

olmo shade / olmo shade
cemento / cemento
bianco / bianco

comodino con ripiano
bedside table with shelf
olmo shade / olmo shade





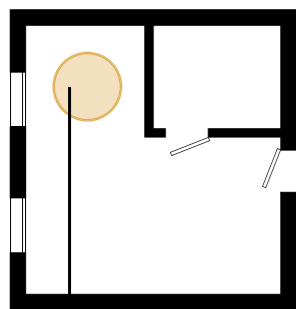
letto Mostar R120 / R120 Mostar bed
olmo shade - pag. 311 / olmo shade - page 311

comodino Bilbao / Bilbao bedside table
cemento - pag. 324 / cemento - page 324

sedia Sneek lounge / Sneek lounge chair
cross T505, bianco - pag. 347 / cross T505, white - page 347

09a - 09b - 09c

Camera Bedroom



con nicchia
with recess

La presenza di una nicchia nella camera è utile per organizzare la parete in modo funzionale: la composizione, grazie alla versatilità degli elementi, trasforma gli spazi donando alla stanza carattere e razionalità.

Having a recess in the bedroom is useful for making more functional use of the wall: with the versatility of the various elements, the configuration transforms the spaces, adding character and a touch of rationality to the room.

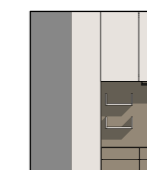
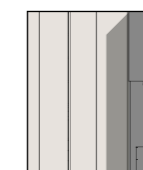




composizione armadio
wardrobe configuration

L / W 220 cm
H / H 257,9 cm
P / D 60,6 cm

L / W 234,8 cm
H / H 257,9 cm
P / D 60,6 cm



elementi / elements

armadio battente / hinged door wardrobe

armadio ponte con fianco metallico

bridging wardrobe with metal side panel

boiserie Cover / Cover wall panelling

componenti Cover / Cover components

basi in appoggio / sit-on-top base units

pedana h 5,7 cm / plinth H 5,7 cm

finiture / finishes

nuvola / nuvola

rovere cotto / rovere cotto



letto Suez R70 stonato, cuffia Ennis
 rounded R70 Suez bed, Ennis headboard cover
 nuvola, spot T553 - pag. 311 / nuvola, spot T553 - page 311

base a terra / floorstanding base unit
 nuvola - pag. 280 / nuvola - page 280

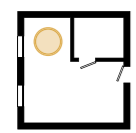


panca scendiletto / bed end bench
 noce naturale / noce naturale
seduta imbottita / padded seat
 cross T515 / cross T515

contenitore appendiabiti Ginevra
 Ginevra coat cupboard
 nuvola / nuvola



09a - **09b** - 09c

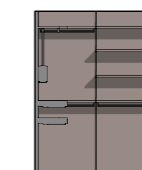


Camera
Bedroom



composizione cabina armadio
walk-in closet configuration

L / W 205,5 cm	L / W 220,2 cm
H / H 257,9 cm	H / H 257,9 cm
P / D 50,8 cm	P / D 50,8 cm



elementi / elements

cabina cremagliera / slotted rail walk-in closet
pedane sp. 5,7 cm / plinths 5,7 cm thick

finiture / finishes

basalto / basalto
rovere cotto / rovere cotto

chiusura scorrevole L 220 x H 270 cm
sliding closing system W 220 x H 270 cm
vetro fumé, grafite / smoked glass, grafite

Turca imbottita / padded platform bed
spot T544 - pag. 309 / spot T544 - page 309

testiera Cardiff, cuffia Singer, luci direzionali
Cardiff headboard, Singer headboard cover, directional lights
rovere cotto, spot T544 - pag. 317 / rovere cotto, spot T544 - page 317

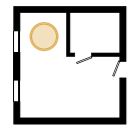


comò Londra
Londra chest of drawers
rovere cotto - pag. 325
rovere cotto - page 325

casellari Zip12 / Zip12 shelving units
rovere cotto / rovere cotto



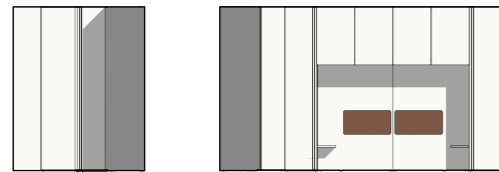
09a - 09b - **09c**



Camera Bedroom

composizione armadio wardrobe configuration

L / W 207 cm L / W 444 cm
H / H 257,9 cm H / H 257,9 cm
P / D 101,5 cm P / D 101,5 cm



elementi / elements

terminale libreria / bookcase end unit
armadio battente / hinged door wardrobe
angolo spogliatoio / corner walk-in closet
armadio ponte / bridging wardrobe
ripiani sagomati / shaped shelves
cuscini per pannello / panel cushions

finiture / finishes

bianco / bianco
soft T566 / soft T566



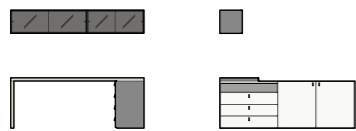
Turca R120 / R120 platform bed
frassino chiaro - pag. 309 / frassino chiaro - page 309





composizione home office
home office configuration

L / W 210 cm L / W 213 cm
H / H 180 cm H / H 74,9 cm
P / D 61 cm P / D 45,4 cm



elementi / elements

pensili / wall units
piano in appoggio sp. 5 cm / 5 cm-thick sit-on-top top
libreria a terra / floorstanding bookcase

finiture / finishes

bianco / bianco
frassino chiaro / frassino chiaro
vetro fumé / smoked glass

sedia Nice / Nice chair
TL31 - pag. 345 / TL31 - page 345

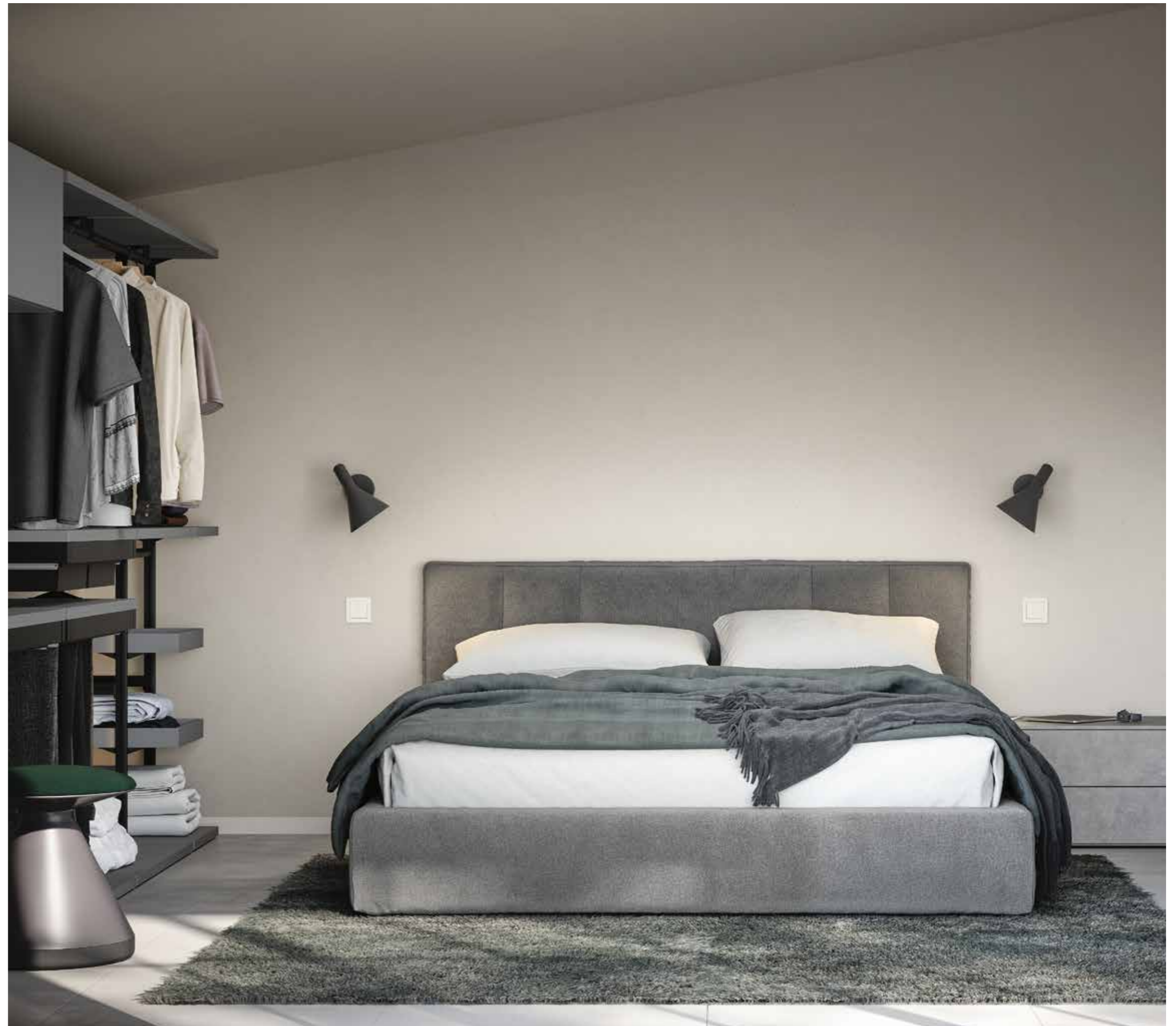


10a - 10b - 10c

Camera Bedroom



Una cabina armadio a vista progettata per donare carattere e versatilità alla camera mansardata. La flessibilità degli elementi modulabili in altezza permette di progettare un guardaroba organizzato anche in presenza di una parete ribassata.
An open walk-in closet designed to add character and versatility to an attic bedroom. The flexibility offered by the elements' different module heights means you can design an organized wardrobe even when dealing with a lower ceiling.

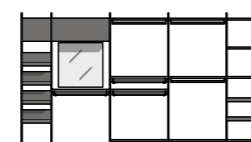




pouf Tokyo / Tokyo ottoman
TL35 - pag. 347 / TL35 - page 347

composizione cabina armadio
walk-in closet configuration

L / W 371,2 cm
H / H 203 cm
P / D 45,8 cm



elementi / elements
sistema Uniko / Uniko system
specchio / mirror
pedana h 3,7 cm / plinth H 3,7 cm

finiture / finishes
cemento / cemento
lavagna / lavagna

letto York / York bed
soft T564 - pag. 316 / soft T564 - page 316



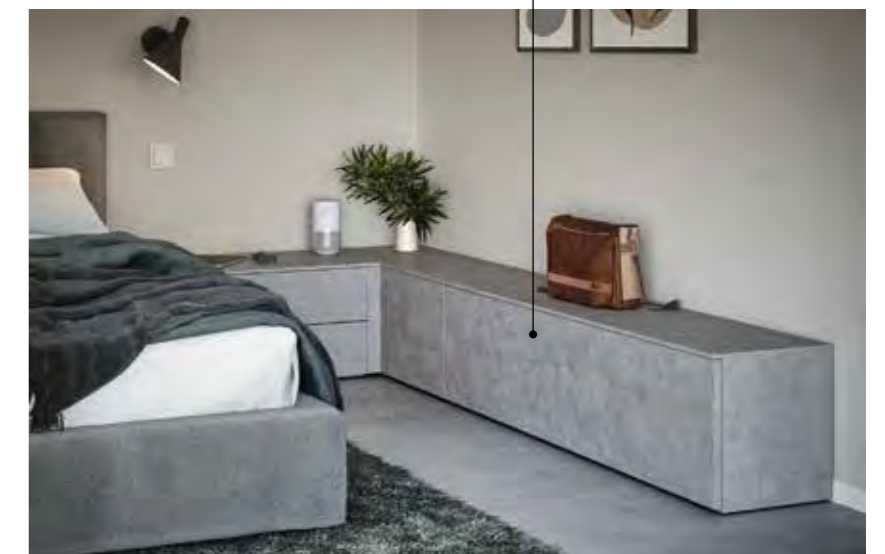
composizione basi a terra
floorstanding base units configuration

L / W 115,2 cm L / W 245,4 cm
H / H 39,5 cm H / H 39,5 cm
P / D 45,8 cm P / D 45,8 cm



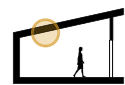
elementi / elements
basi a terra / floorstanding base units

finiture / finishes
intonaco / intonaco



10a - **10b** - 10c

Camera
Bedroom



letto Lagos R290 stondato / rounded R290 Lagos bed
basalto, thick T529 - pag. 310 / basalto, thick T529 - page 310



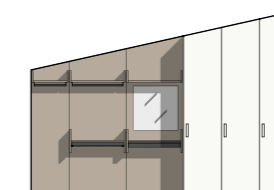
comodino Bilbao / Bilbao bedside table
noce naturale, basalto - pag. 324
noce naturale, basalto - page 324

mensole in metallo / metal shelves
basalto / basalto

pouf Tokyo / Tokyo ottoman
TL36 - pag. 347 / TL36 - page 347

composizione armadio
wardrobe configuration

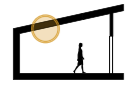
L / W 422,8 cm
H / H 200 + 291,5 cm
P / D 60,6 cm



elementi / elements
armadio battente / hinged door wardrobe
boiserie Cover / Cover wall panelling
componenti Cover / Cover components
specchio per boiserie / mirror for wall panelling
pedana h 8,7 cm / plinth H 8,7 cm

finiture / finishes
bianco / bianco
noce naturale / noce naturale

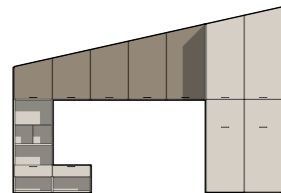
10a - 10b - **10c**



Camera Bedroom

composizione armadio
wardrobe configuration

L / W 425,5 cm
H / H 200 + 290 cm
P / D 60,6 cm



elementi / elements

libreria a terra / floorstanding bookcase
elemento Sudoku / Sudoku unit
libreria sospesa / wall-mounted bookcase
armadio battente / hinged door wardrobe

finiture / finishes

canapa / canapa
rovere cotto / rovere cotto

letto Jerez R18Z stondato / rounded R18Z Jerez bed
canapa, thick T521 - pag. 315 / canapa, thick T521 - page 315





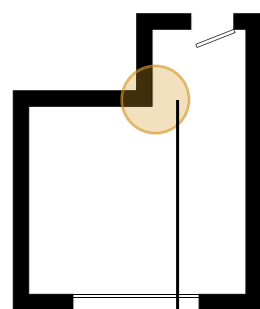
scrivania sagomata con fianco sp. 5 cm
shaped desk with 5 cm-thick side panel
canapa - pag. 328 / canapa - page 328

base sospesa / wall-mounted base unit
canapa - pag. 280 / canapa - page 280

sedia Sneek imbottita / upholstered Sneek chair
smooth T152, basamento R1 - pag. 343
smooth T152, R1 base - page 343

11a - 11b - 11c

Camera Bedroom



ad angolo
corner

Una soluzione progettuale per la camera con forma irregolare: lo spazio della parete ad angolo viene organizzato in modo funzionale, ogni elemento trova infatti la giusta collocazione, per un ambiente comodo e piacevole da vivere.

A design solution for an irregularly shaped bedroom: the space on the corner wall jutting into the room is organized in a functional way, so each element is perfectly placed, for a comfortable room that's a joy to spend time in.

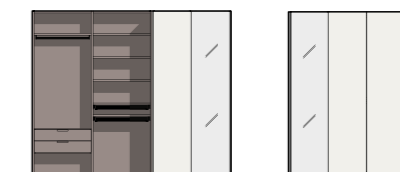




composizione armadio
wardrobe configuration

L / W 313 cm
H / H 257,9 cm
P / D 60,6 cm

L / W 201,8 cm
H / H 257,9 cm
P / D 60,6 cm



elementi / elements

cabina a spalla

walk-in closet system with load-bearing side panels

armadio battente / hinged door wardrobe

finiture / finishes

olmo shade / olmo shade

bianco / bianco

basalto / basalto

specchio chiaro / light mirror



sedia Cannes / Cannes chair
 TL32 - pag. 345 / TL32 - page 345

composizione home office
 home office configuration

L / W 270 cm
 H / H 155 cm
 P / D 61 cm

elementi / elements

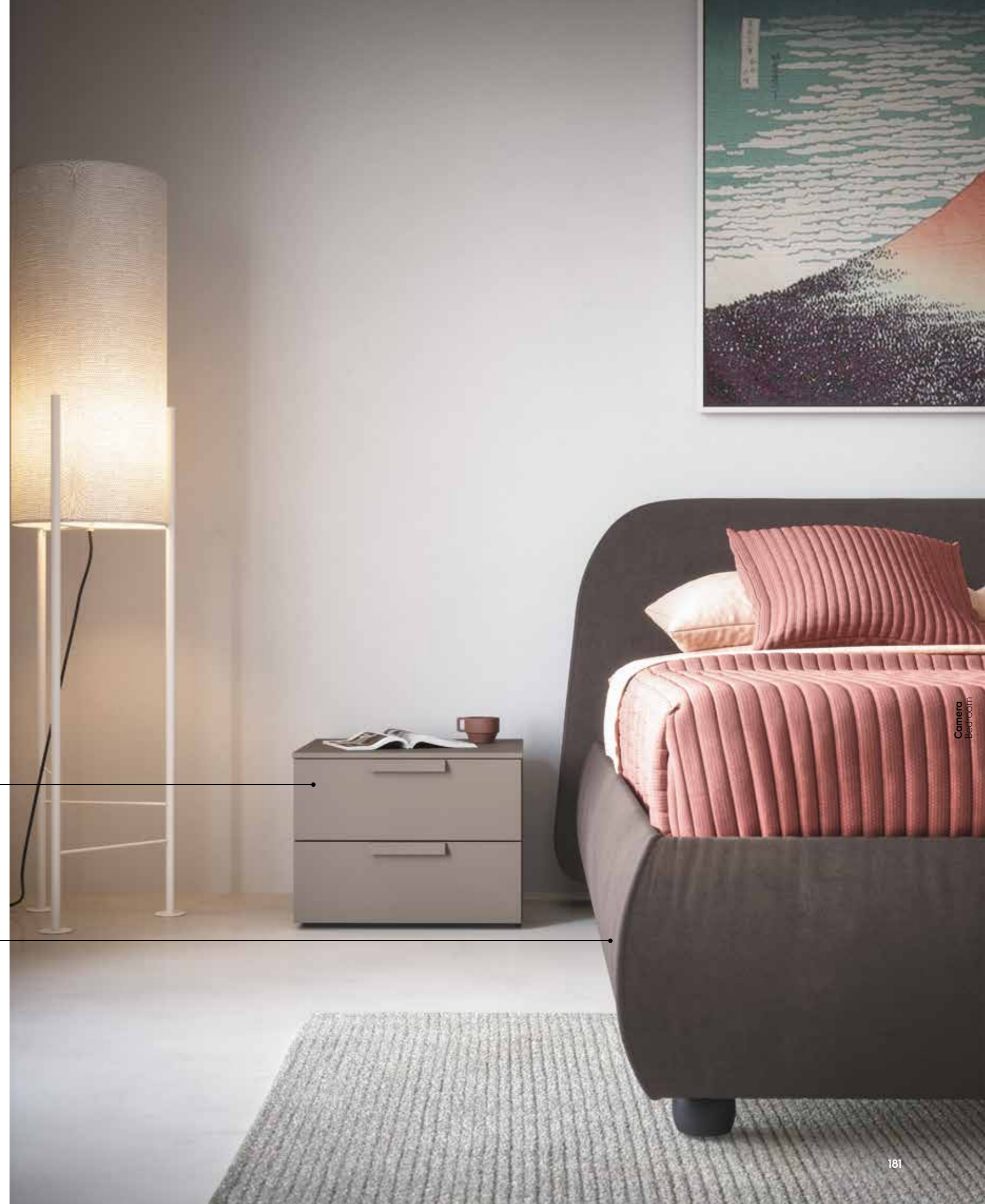
basi sospese / wall-mounted base units
piano sospeso con alzata sp. 5 cm
 5 cm-thick wall-mounted top with upstand
casellari Zip12 / Zip12 shelving units

finiture / finishes

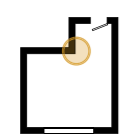
basalto / basalto
olmo shade / olmo shade

comodino Oslo / Oslo bedside table
 basalto - pag. 326 / basalto - page 326

letto Kora / Kora bed
 spot T549 - pag. 315 / spot T549 - page 315



11a - **11b** - 11c



Camera
Bedroom

mensole ad L / L-shaped shelves
canapa / canapa



comodini Praga / Praga bedside tables
canapa - pag. 327 / canapa - page 327

letto Este R180 stondato / rounded R180 Este bed
noce naturale, lavagna - pag. 310 / noce naturale, lavagna - page 310

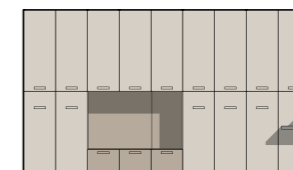


Camera
Bedroom



composizione armadio
wardrobe configuration

L / W 452,5 cm
H / H 257,9 cm
P / D 60,6 cm



elementi / elements

armadio battente / hinged door wardrobe
armadio ponte / bridging wardrobe
basi armadio / wardrobe base units
boiserie Arnad / Arnad wall panelling

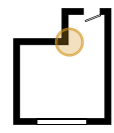
finiture / finishes

canapa / canapa
noce naturale / noce naturale

piano sospeso con alzata sp. 5 cm / 5 cm-thick wall-mounted top with upstand
noce naturale - pag. 332 / noce naturale - page 332

sedia Sneek imbottita / upholstered Sneek chair
spot T541, basamento R2 bianco - pag. 343 / spot T541, white R2 base - page 343

11a - 11b - **11c**



Camera Bedroom



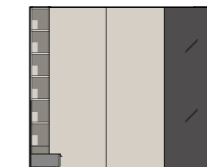
comodino con ripiano
bedside table with shelf
rovere cotto / rovere cotto

composizione armadio wardrobe configuration

L / W 455 cm
H / H 109,8 cm
P / D 211,3 cm

L / W 302,5 cm
H / H 257,9 cm
P / D 64,2 cm

L / W 153 cm
H / H 257,9 cm
P / D 48,6 cm



elementi / elements

boiserie Arnad / Arnad wall panelling
libreria a terra / floorstanding bookcase
armadio scorrevole / sliding door wardrobe

finiture / finishes

canapa / canapa
rovere cotto / rovere cotto
lavagna / lavagna
specchio brunito / tinted mirror
thick T522 / thick T522

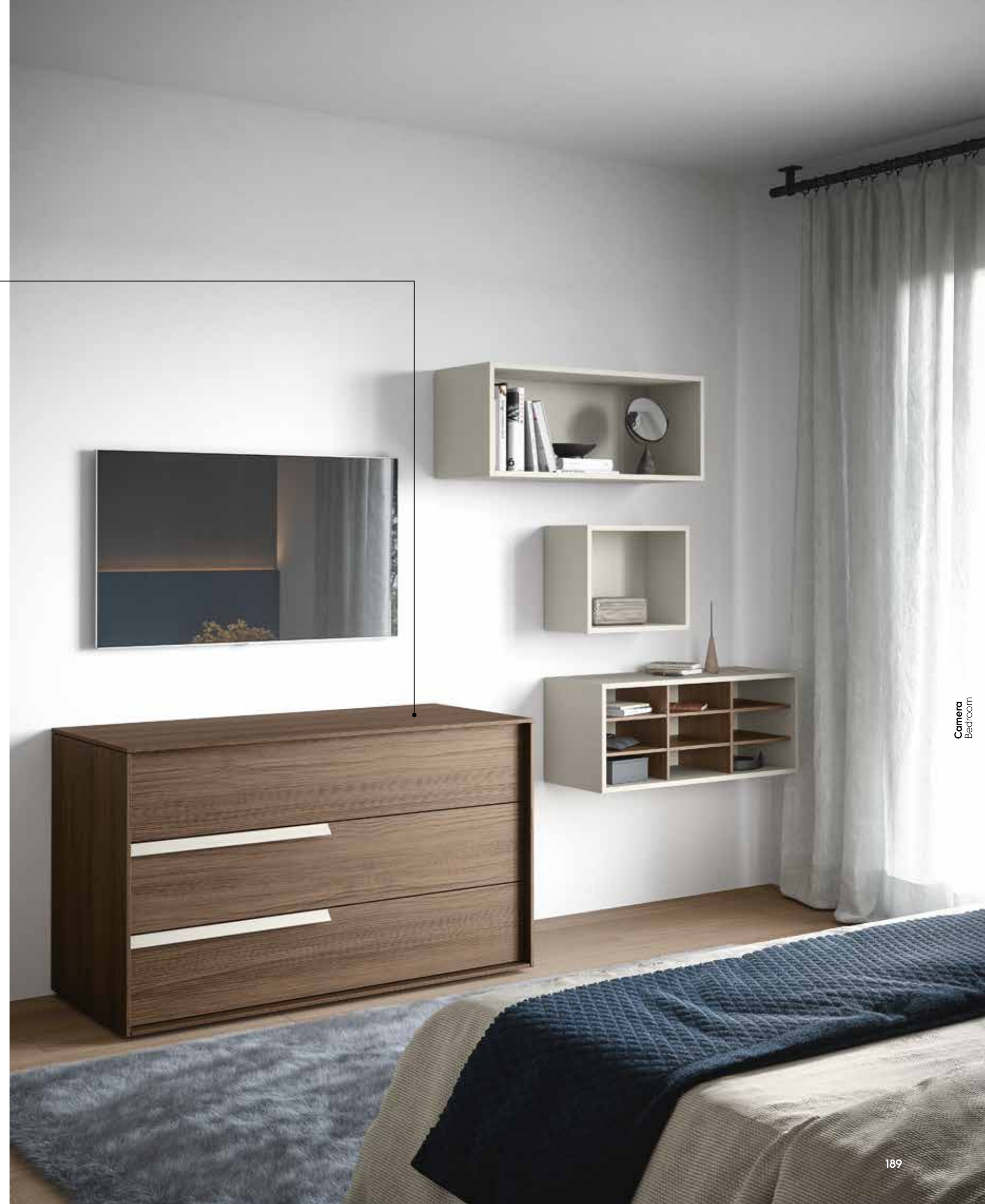


comò Bonn / Bonn chest of drawers
rovere cotto, canapa - pag. 325
rovere cotto, canapa - page 325

casellari con crociera
shelving units with pigeon hole
canapa, rovere cotto - pag. 280
canapa, rovere cotto - page 280

Turca R18Z stondato / rounded R18Z platform bed
canapa - pag. 309 / canapa - page 309

base in appoggio su pedana h 5,7 cm / base unit sitting on plinth H 5,7 cm
canapa, rovere cotto - pag. 280 / canapa, rovere cotto - page 280



Sempre in ordine

Keeping spaces tidy

lavanderia / laundry



12a - pag. 192



12b - pag. 196



12c - pag. 200



12d - pag. 204

lavanderia mansardata / attic laundry



13a - pag. 208



13b - pag. 212

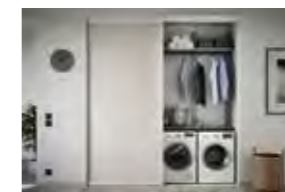


13c - pag. 216

La lavanderia è un ambiente che richiede un'organizzazione puntuale degli spazi. Soluzioni d'arredo modulari rendono funzionale l'ambiente di servizio, adattandosi al progetto architettonico. Un'ampia gamma di elementi salvaspazio.

The laundry is a room that requires spaces to be properly organized. Modular furniture solutions make utility areas functional, adapting to fit within the architectural envelope. An extensive range of space-saving items.

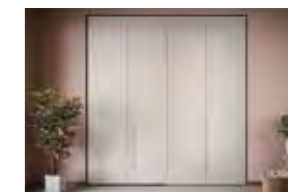
lavanderia in nicchia / laundry in a recess



14a - pag. 218



14b - pag. 222

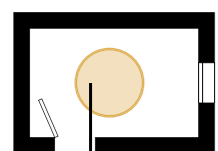


14c - pag. 224

12a - 12b - 12c - 12d

Lavanderia

Laundry



lavanderia
laundry

Una stanza adibita a lavanderia dove riporre gli accessori dedicati a pulizie e bucato. Uno spazio organizzato e sempre ordinato, grazie all'ampia flessibilità compositiva degli elementi d'arredo.

A room set up as a laundry for storing cleaning and laundry tools. A space kept tidy and organized thanks to the impressive modular flexibility of the items of furniture.

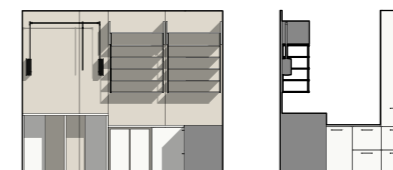




composizione lavanderia
laundry configuration

L / W 315,6 cm
H / H 257,9 cm
P / D 73,3 cm

L / W 205,6 cm
H / H 257,9 cm
P / D 61 cm



elementi / elements

boiserie Cover / Cover wall panelling

componenti Cover / Cover components

piano di lavoro / worktop

basi armadio / wardrobe base units

armadio battente / hinged door wardrobe

cesti portabiancheria su ruote / laundry baskets on castors

finiture / finishes

frassino chiaro / frassino chiaro

bianco / bianco



12a - **12b** - 12c - 12d

Lavanderia



Laundry



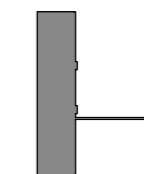
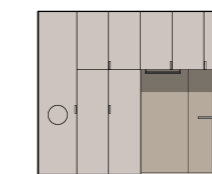
composizione lavanderia
laundry configuration

L / W 313 cm
H / H 257,9 cm
P / D 60,6 cm

L / W 206 cm
H / H 92,5 cm
P / D 61 cm

elementi / elements

- armadio battente / hinged door wardrobe
- armadio ponte / bridging wardrobe
- ripiani sagomati / shaped shelves
- pedana h 3,7 cm / plinth H 3,7 cm
- piano scrivania sp. 3 cm con fianco / 3 cm-thick desk top with side panel



finiture / finishes

- cashmere / cashmere
- noce naturale / noce naturale
- bianco / bianco



12a - 12b - **12c** - 12d

Lavanderia Laundry



composizione lavanderia
laundry configuration

L / W 318 cm
H / H 221,3 cm
P / D 45,4 cm



elementi / elements

libreria con gambe metalliche e sospesa
bookcase with metal legs and wall mounted

finiture / finishes

olmo shade / olmo shade

cemento / cemento

lavagna / lavagna

titanio / titanio





composizione portascarpe
shoe rack configuration

L / W 183 cm
H / H 148,1 cm
P / D 43 cm



elementi / elements
libreria con gambe metalliche
bookcase with metal legs

finiture / finishes
cemento / cemento
lavagna / lavagna

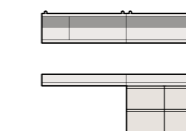
12a - 12b - 12c - **12d**
Lavanderia
 Laundry



composizione lavanderia
 laundry configuration

L / W 255 cm
 H / H 200 cm
 P / D 61 cm

elementi / elements



boiserie Arnad / Arnad wall panelling
mensole sp. 5 cm / 5 cm-thick shelves
piani sospesi con alzata sp. 5 cm
 5 cm-thick wall-mounted top with upstand
basi sospese / wall-mounted base units

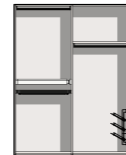
finiture / finishes

calce / calce
nuvola / nuvola



composizione lavanderia
laundry configuration

L / W 182,5 cm
H / H 237,6 cm
P / D 51,8 cm



elementi / elements
cabina armadio / walk-in closet

finiture / finishes
calce / calce
nuvola / nuvola



13a - 13b - 13c

Lavanderia

Laundry



La presenza del sottotetto viene risolta sfruttando l'ampia modularità degli elementi, che consente di organizzare al meglio lo spazio disponibile. Un ambiente di servizio organizzato grazie a soluzioni d'arredo che ottimizzano l'ingombro.

The issue of dealing with a sloping ceiling is addressed by leveraging the elements' extensive range of module options, enabling the available space to be organized in the best possible way. A utility area turned into an organized space thanks to furniture solutions that make the best of a small footprint.



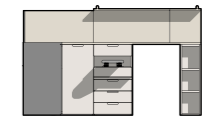
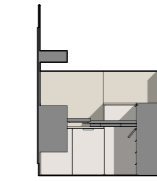
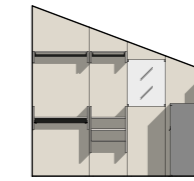


composizione lavanderia
laundry configuration

L / W 278 cm
H / H 164,7 ÷ 268,2 cm
P / D 46,3 cm

L / W 215,7 cm
H / H 164,7 cm
P / D 61 cm

L / W 280 cm
H / H 167,7 cm
P / D 61 cm



elementi / elements

- boiserie Cover** / Cover wall panelling
- componenti Cover** / Cover components
- specchio per boiserie** / mirror for wall panelling
- boiserie Arnad** / Arnad wall panelling
- mensola sp. 3 cm** / 3 cm-thick shelf
- basi armadio** / wardrobe base units
- libreria a terra** / floorstanding bookcase

finiture / finishes

- frassino chiaro** / frassino chiaro
- nuvola** / nuvola



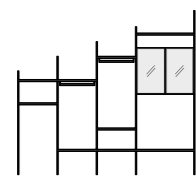
13a - **13b** - 13c

Lavanderia Laundry



composizione lavanderia
laundry configuration

L / W 279 cm
H / H 162 + 257,9 cm
P / D 45,8 cm



elementi / elements
sistema Uniko / Uniko system
pensile / wall unit

finiture / finishes

lavagna / lavagna
specchio chiaro / light mirror



composizione lavanderia
laundry configuration

L / W 270 cm
H / H 122,7 cm
P / D 61 cm

• • •

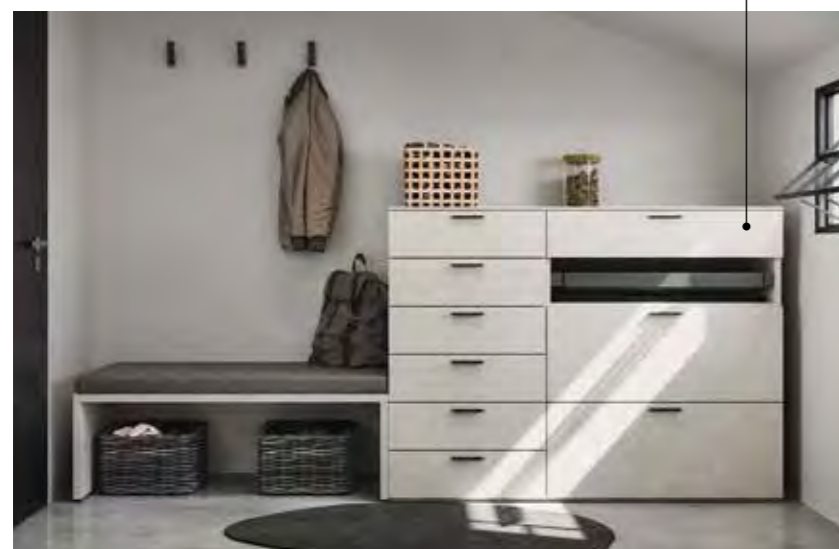


elementi / elements

portavaligie / luggage shelf
seduta imbottita / padded seat
basi a terra / floorstanding base units
ganci appendiabiti / coat hooks

finiture / finishes

calce / calce
cross T512 / cross T512
grafite / grafite
lavagna / lavagna
brunito / bronze



13a - 13b - **13c**

Lavanderia Laundry

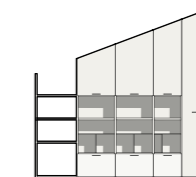
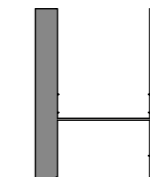
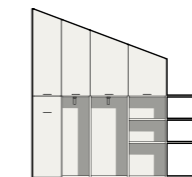


composizione lavanderia laundry configuration

L / W 278 cm
H / H 164 + 267,5 cm
P / D 35,2 cm

L / W 215,6 cm
H / H 94,7 cm
P / D 65 cm

L / W 278 cm
H / H 164 + 267,5 cm
P / D 35,2 cm



elementi / elements

libreria a terra / floorstanding bookcase

elementi Sudoku / Sudoku units

pannello orizzontale sp. 3 cm / 3 cm-thick horizontal panel

finiture / finishes

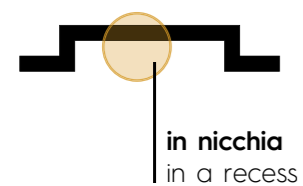
olmo shade / olmo shade

bianco / bianco

14a - 14b - 14c

Lavanderia

Laundry



Progettare una nicchia dedicata alla lavanderia, un piccolo ambiente organizzato dove ogni accessorio trova la giusta collocazione. Una soluzione che permette di avere una piccola lavanderia pratica ma discreta.

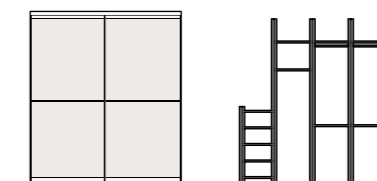
Designing a recess to house a laundry, a small organized alcove where all your accessories find a proper home. A solution that allows you to have a small laundry that's at once practical and discreet.





composizione lavanderia
laundry configuration

L / W 241,8 cm	L / W 240 cm
H / H 270 cm	H / H 257,9 cm
P / D 10,3 cm	P / D 50,8 cm

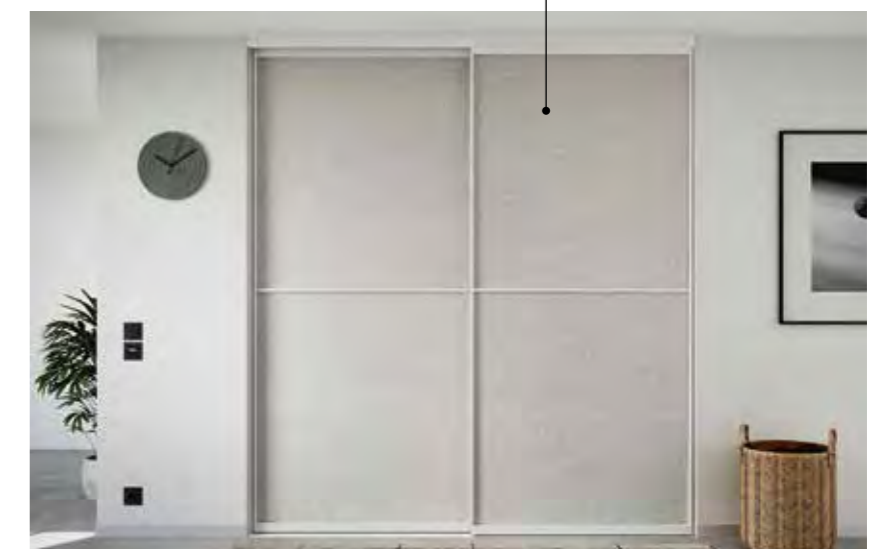


elementi / elements

chiusura scorrevole / sliding closing system
cabina cremagliera / slotted rail walk-in closet

finiture / finishes

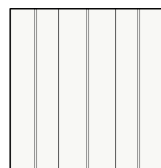
cemento / cemento
calce / calce
bianco / bianco



14a - **14b** - 14c
Lavanderia
Laundry

composizione lavanderia
laundry configuration

L / W 241 cm
H / H 257,9 cm
P / D 72,2 cm



elementi / elements

armadio Service battente
hinged door Service cupboard
cesti portabiancheria su ruote
laundry baskets on castors

finiture / finishes

bianco / bianco



14a - 14b - **14c**

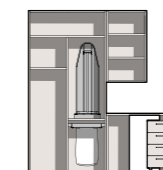
Lavanderia

Laundry



composizione lavanderia
laundry configuration

L / W 242,5 cm
H / H 257,9 cm
P / D 80 cm



elementi / elements

armadio pieghevole / folding door wardrobe
chiusura pieghevole / folding closing system
libreria sospesa / wall-mounted bookcase
piano di lavoro / worktop
cassettiera con ruote / drawer unit on castors

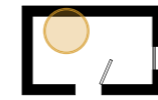
finiture / finishes

nuvola / nuvola
nicel / nichel

Ambienti di servizio funzionali e organizzati

Functional and
organized utility areas

dispensa / pantry



15a - pag. 228

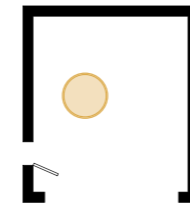


15b - pag. 232



15c - pag. 234

garage / garage



16a - pag. 236



16b - pag. 240

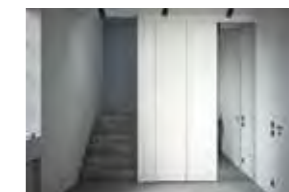


16c - pag. 242

ripostiglio / walk-in cupboard



17a - pag. 244



17b - pag. 248

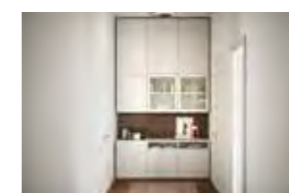
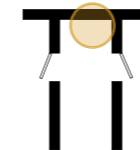


17c - pag. 250

Ottimizzare un progetto, significa anche sfruttare al meglio gli ambienti di servizio. Dispensa, garage, ripostiglio e corridoio diventano spazi funzionali dall'ampio potere contenitivo, da gestire al meglio grazie alle diverse soluzioni compositive.

Optimizing an interior layout is also a question of exploiting utility areas to the full. Pantry, garage, walk-in cupboard and corridor become functional spaces offering tonnes of storage; spaces that can be put together to best effect with different configurations.

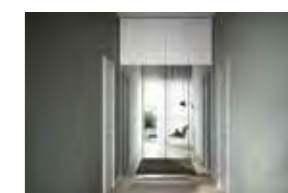
disimpegno / vestibule



18a - pag. 252



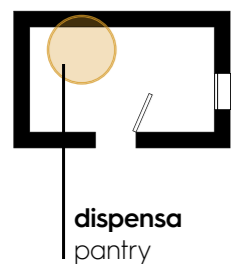
18b - pag. 256



18c - pag. 258

15a - 15b - 15c

Dispensa Pantry



Disporre di un ambiente dedicato alle scorte alimentari diventa strategico soprattutto per chi ha poco tempo. Anche in presenza di spazi ridotti la modularità degli elementi permette di trovare la giusta collocazione a ogni prodotto.

Having a room just for food storage is a strategic plus, especially for the time-poor. Even when dealing with small spaces, the elements' modular design means you can ensure that there's an appropriate place for every product.

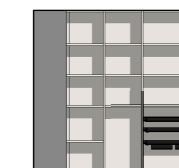
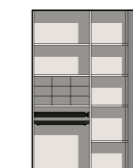




composizione dispensa
pantry configuration

L / W 202,3 cm
H / H 255,9 cm
P / D 51,8 cm

L / W 272,3 cm
H / H 255,9 cm
P / D 51,8 cm



elementi / elements

cabina armadio / walk-in closet

finiture / finishes

nuvola / nuvola

15a - **15b** - 15c
Dispensa
 Pantry



composizione dispensa
 pantry configuration

L / W 186 cm	L / W 276 cm
H / H 257,9 cm	H / H 257,9 cm
P / D 47,6 cm	P / D 44,5 cm



elementi / elements

cabina a spalla
 walk-in closet system with load-bearing side panels
libreria sospesa / wall-mounted bookcase
casellari / shelving units

finiture / finishes

cashmere / cashmere
titanio / titanio

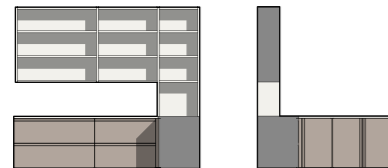
15a - 15b - **15c**

Dispensa Pantry



composizione dispensa pantry configuration

L / W 275,4 cm L / W 200,6 cm
H / H 239,6 cm H / H 77,9 cm
P / D 61 cm P / D 61 cm



elementi / elements

libreria sospesa e sovrapposta
wall-mounted and sit-on-top bookcase
basi a terra / floorstanding base units

finiture / finishes

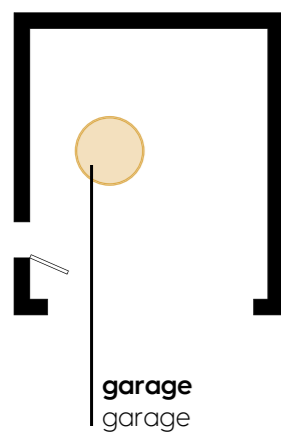
sabbia / sabbia
frassino chiaro / frassino chiaro



16a - 16b - 16c

Garage

Garage



Progettare il garage in modo ottimale, sfruttando interamente lo spazio disponibile: si può, grazie all'ampia gamma di composizioni pensate per ottimizzare gli spazi. Un ambiente dove riporre attrezzi e oggetti dedicati alla pulizia e al bucato.

An optimal garage design that exploits every last centimetre of available space: with an extensive range of configurations designed to optimize spaces, the ultimate garage fitout is within reach. A place for storing tools and all that cleaning and laundry equipment.

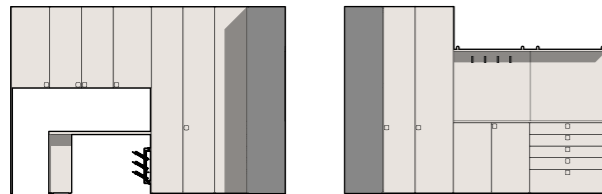




composizione garage
garage configuration

L / W 432,3 cm
H / H 294,5 cm
P / D 60,6 cm

L / W 412,3 cm
H / H 294,5 cm
P / D 61 cm



elementi / elements

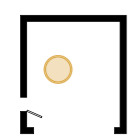
- armadio ponte** / bridging wardrobe
- piano scrivania sp. 5 cm con fianco** / 5 cm-thick desk top with side panel
- armadio battente** / hinged door wardrobe
- basi armadio** / wardrobe base units
- boiserie Arnad** / Arnad wall panelling
- mensole sp. 3 cm** / 3 cm-thick shelves
- ganci appendiabiti** / coat hooks

finiture / finishes

- nuvola** / nuvola
- brunito** / bronze



16a - **16b** - 16c



Garage

Garage

composizione garage garage configuration

L / W 360 cm L / W 483 cm
H / H 221,3 cm H / H 221,3 cm
P / D 61 cm P / D 45,4 cm



elementi / elements

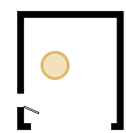
libreria sospesa / wall-mounted bookcase
piano sospeso con alzata sp. 5 cm / 5 cm-thick wall-mounted top with upstand
libreria con gambe metalliche / bookcase with metal legs

finiture / finishes

lavagna / lavagna
bianco / bianco
frassino chiaro / frassino chiaro



16a - 16b - **16c**



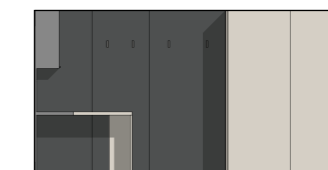
Garage Garage



composizione garage garage configuration

L / W 363,6 cm
H / H 258,2 cm
P / D 61 cm

L / W 502,5 cm
H / H 258,2 cm
P / D 64,2 cm



elementi / elements

boiserie Cover / Cover wall panelling

componenti Cover / Cover components

pensili / wall units

piano scrivania sp. 5 cm con fianchi / 5 cm-thick desk top with side panels

ganci appendiabiti / coat hooks

armadio scorrevole / sliding door wardrobe

finiture / finishes

canapa / canapa

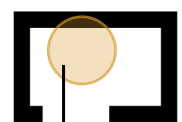
lavagna / lavagna

brunito / bronze

17a - 17b - 17c

Ripostiglio

Walk-in cupboard



ripostiglio
walk-in cupboard

Una nicchia funzionale per riporre gli oggetti del quotidiano, aiuta a mantenere la casa in ordine. Un ambiente di servizio pratico e organizzato grazie alla versatilità degli elementi che consentono di progettare infinite soluzioni d'arredo.

A functional recess for storing everyday objects, helping keep the home tidy. A utility area turned into a practical and organized space thanks to the versatility of the various elements, which allow for the design of endless furniture solutions.





chiusura pieghevole L 90 x H 221,3 cm
 folding closing system W 90 x H 221,3 cm
bianco / bianco

mensole in metallo
 metal shelves
bianco / bianco

composizione ripostiglio
 walk-in cupboard configuration

L / W 175,1 cm	L / W 145,6 cm
H / H 257,9 cm	H / H 257,9 cm
P / D 50,8 cm	P / D 50,8 cm



elementi / elements
cabina cremagliera
 slotted rail walk-in closet

finiture / finishes
cemento / cemento
intonaco / intonaco

17a - **17b** - 17c

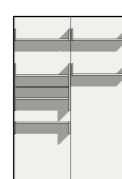
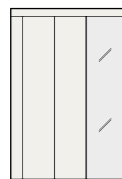
Ripostiglio

 Walk-in cupboard

composizione ripostiglio
walk-in cupboard configuration

L / W 182 cm
H / H 270 cm
P / D 62,2 cm

L / W 180 cm
H / H 257,9 cm
P / D 46,3 cm



elementi / elements

chiusura battente con montante compensatore

hinged closing system with filler upright

armadio battente / hinged door wardrobe

boiserie Cover / Cover wall panelling

componenti Cover / Cover components

finiture / finishes

olmo shade / olmo shade

specchio chiaro / light mirror

bianco / bianco



17a - 17b - **17c**

Ripostiglio

Walk-in cupboard

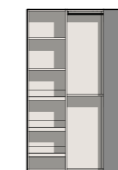


chiusura scorrevole L 180 x H 226,7 cm
sliding closing system W 180 x H 226,7 cm
frassino chiaro, bianco / frassino chiaro, bianco



composizione ripostiglio
walk-in cupboard configuration

L / W 172,3 cm L / W 143,6 cm
H / H 255,9 cm H / H 255,9 cm
P / D 51,8 cm P / D 51,8 cm



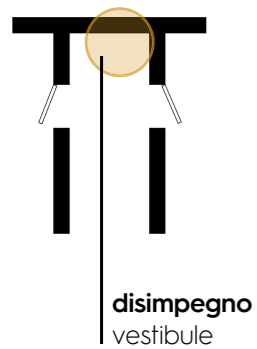
elementi / elements
cabina armadio / walk-in closet

finiture / finishes
nuvola / nuvola

18a - 18b - 18c

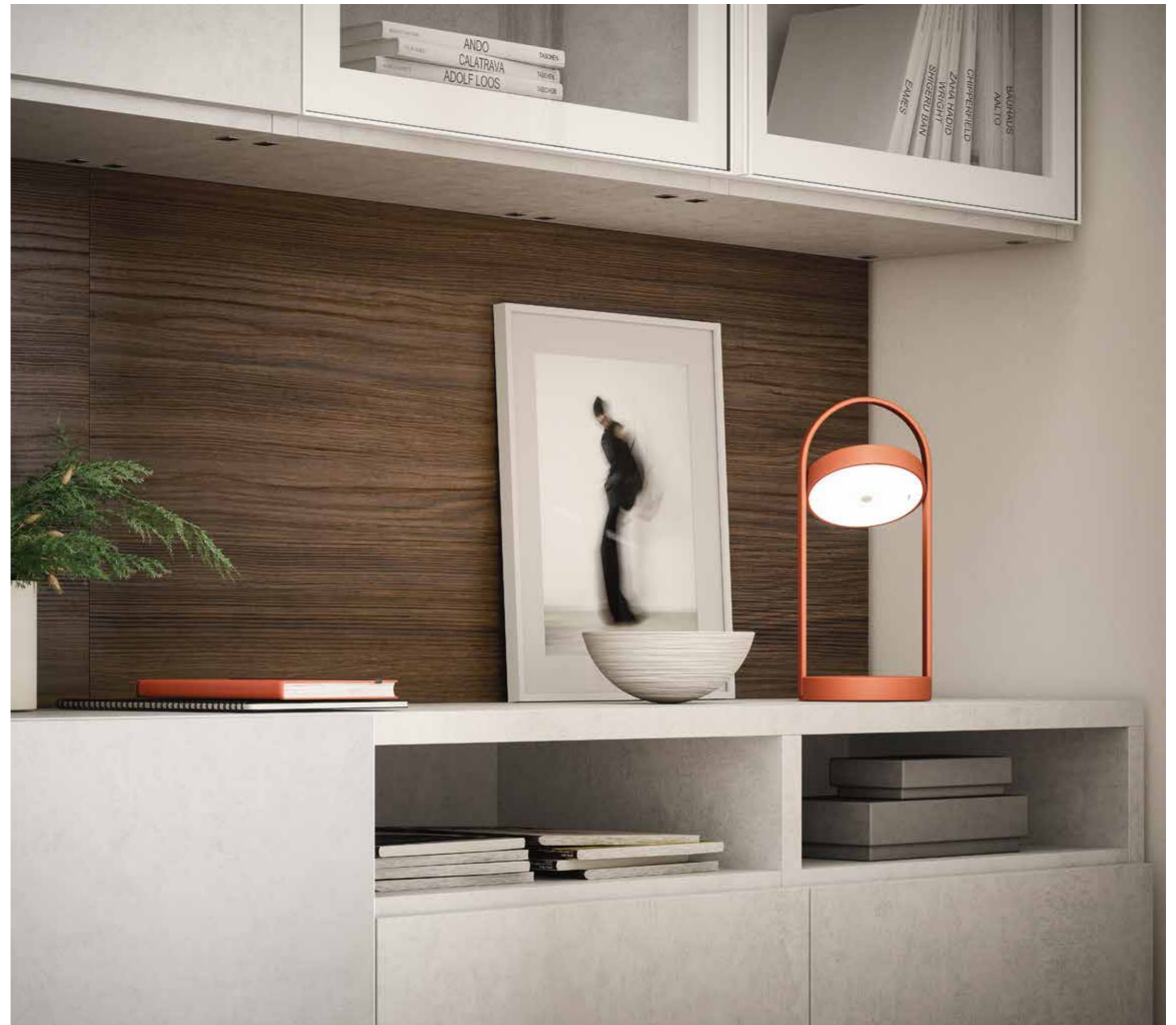
Disimpegno

Vestibule



Arredare il corridoio, trasformando uno spazio inutilizzato in modo funzionale. Grazie all'ampia scelta di elementi disponibili, il corridoio acquista carattere e diventa parte integrante del progetto d'arredo. La funzionalità incontra lo stile.

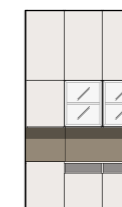
Furnishing a corridor can transform an unused space into a functional one. The extensive choice of elements adds character to the corridor, turning it into an integral part of the interior decor project. When function meets style.





composizione disimpegno
vestibule configuration

L / W 183 cm
H / H 312,8 cm
P / D 45,4 cm



elementi / elements
libreria a terra e sospesa
floorstanding and wall-mounted bookcase
boiserie Arnad / Arnad wall panelling

finiture / finishes

calce / calce
rovere cotto / rovere cotto
vetro trasparente / transparent glass
bianco / bianco

18a - **18b** - 18c



Disimpegno

Vestibule

composizione disimpegno
vestibule configuration

L / W 182,5 cm
H / H 312,8 cm
P / D 60,6 cm



elementi / elements

armadio battente / hinged door wardrobe
elementi sovrapponibili / stackable units

finiture / finishes

nuvola / nuvola

intonaco / intonaco

nicel / nicel



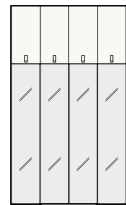
18a - 18b - **18c**



Disimpegno Vestibule

composizione disimpegno
vestibule configuration

L / W 182,5 cm
H / H 312,8 cm
P / D 60,6 cm



elementi / elements

armadio battente / hinged door wardrobe
chiusura battente / hinged closing system
elementi sovrapponibili / stackable units
libreria a terra / floorstanding bookcase

finiture / finishes

bianco / bianco
specchio chiaro / light mirror



Credits

creative and design director

Valeria Carlesso

communication concept and graphic design

grucciadesign.

project and set design

cinquanta3 studio

digital images

Helios Digital

colour separation and print

Lucegroup

January 2022

Cinquanta3

via G. Galilei 35
31053 Pieve di Soligo
Treviso - Italia

T +39 0438 83 93
F +39 0438 83 95 55
info@cinquanta3.it
cinquanta3.it

Battistella spa si riserva in qualsiasi momento la facoltà di apportare tutte le modifiche necessarie al miglioramento funzionale e qualitativo dei propri prodotti. Per ogni aspetto tecnico e dimensionale fare riferimento ai listini aziendali e relativi aggiornamenti. I colori e i materiali riprodotti nelle immagini stampate hanno un valore indicativo. Battistella spa declina ogni responsabilità derivante da eventuali inesattezze di stampa e/o da errori sulle caratteristiche dei prodotti forniti.

In line with its policy of improving product function and quality, Battistella spa reserves the right to make any necessary changes at any time. For information of a technical and dimensional nature, refer to the company price lists and relevant updates. The colours and materials reproduced in the images printed herein are given as an approximate guide only. Battistella spa does not accept any responsibility for misprints and/or mistakes in describing the characteristics of the products supplied.



