



## **An Introduction To Davonport**

Quality Is Never An Accident	4
Like Father, Like Son	6
The Drawing Board	8
No Room For Compromise	10
The Bigger Picture	12

## **Styling Your Kitchen**

Taking Centre Stage: Islands	16
Set In Stone: Structural Challenges	22
Open Spaces: Large Kitchens	24
Compact Cooking: Small Kitchens	32
A Classic Centrepiece: Mantels	34
Everything In Its Place: Pantries & Larders	36
Inside Out: Incorporating Outdoors	38

## **Client Journeys**

Nineteenth Century Country Manor	40
South West London Townhouse	48
Coastal Retreat	56
The Perfect Blend	64
From Design To Reality	72
Perfectly Placed In Other Rooms	80
To Start The Journey...	84

NOT  
ALL  
KITCHENS  
ARE  
CREATED  
EQUAL









# QUALITY IS NEVER AN ACCIDENT



The evolution of the modern kitchen as the focus, the centre, the very heart of life in the home has brought exciting innovations in style, materials and functionality. But a kitchen is much more than a practical, functional space or even a piece of interior design. Of course it can make a statement about your style and taste, but actually, the best kitchen is the one that reflects the life you lead.

It may contain an abundance of new technologies, or be an exquisite example of functional practicality but it should always blend seamlessly into your lifestyle and enhance your enjoyment of your home. As the centre of your home your kitchen should work in harmony with your lifestyle so that when you are in it all feels right in the world. At Davonport we take the task of creating such an influential room very seriously and we appreciate being trusted to create this for you.

The journey towards realising your dream starts with our ambition to create your perfect living space and determination to apply our knowledge, skills and experience to creating your bespoke kitchen, designed exclusively for you.

With more than two decades of experience we have developed many styles and designs for a variety of tastes. From classic to modern, minimal to traditional, we have supplied living environments to many discerning customers.

# LIKE FATHER, LIKE SON

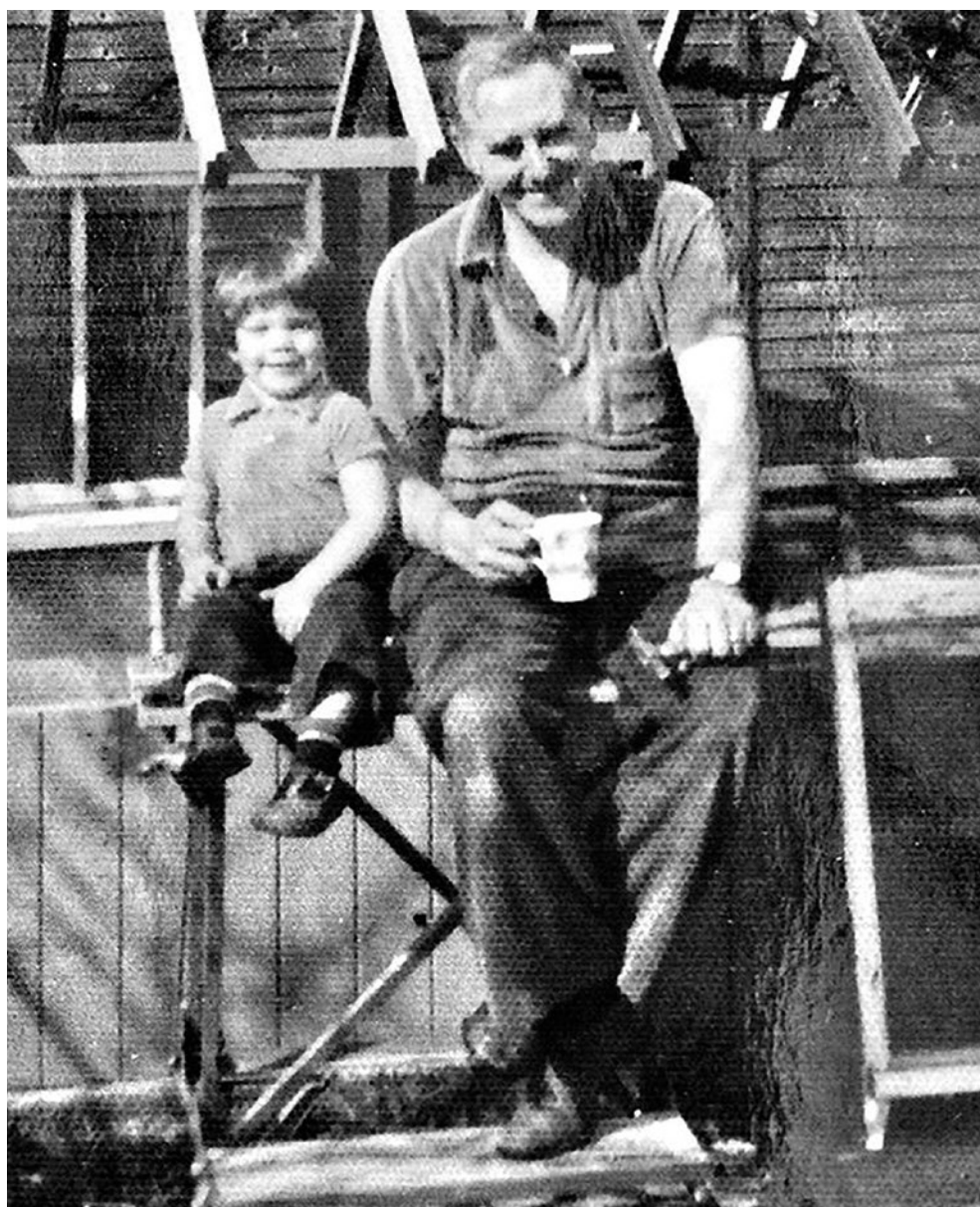
From humble origins Richard Davonport built the Davonport name using only the finest materials and his expert knowledge throughout the design and manufacturing process.

Richard's initial interest in furniture design was inspired by his father, Aubrey Davonport. Aubrey was an honorary member of the British Woodcarvers Association and taught his son how to carve using off-cuts of timber which Richard collected from an after-school job cutting down trees. With an interest in woodwork established Richard progressed quickly. He left his first job at a yacht builder to attend college and qualified with a Distinction in Furniture Design and Cabinet Making. From there his knowledge and expertise grew and in 1992 he won several awards for cabinet making.

In the early nineties Richard set up his own workshop and Davonport was borne. In 1996 Richard moved to larger premises and switched his focus to designing and building luxury, bespoke kitchens. His attention to detail and unwillingness to compromise on quality soon led to growth in the business. By 2005 Davonport had become a respected brand working with over 20 design studios across the UK.

In 2013 Davonport moved to its current home – a 1.2 acre site in Stanway, Colchester which comprises of a showroom, 20,000sq ft workshop and head office. Though the company has come a long way in the last two decades, with Richard at the helm, Davonport has never lost sight of its ethos – a strong focus on traditional craftsmanship, using the best materials to create furniture without compromise.





# THE DRAWING BOARD

Every piece of furniture we make is entirely bespoke; there are no stock pieces or 'off the shelf' solutions. We work on a strictly made to order basis meaning that our designers start every project with a totally fresh perspective ready to create something truly incredible for you. This way we guarantee that your kitchen is made to fit around you, and never the other way around.


## **COLLECTIONS ARE SIMPLY GUIDES**

You will notice that we offer a selection of kitchen styles; these refer to door designs, handle details and other technical design aspects. We respectfully ask you to remember that these are just guides and if you would like to combine aspects of different collections this is something we'll happily work on for you.

## **GET TO KNOW YOUR DESIGNER**

The design process begins with an initial consultation in our showroom where you will experience the quality of our furniture and gain inspiration from the wide variety of kitchen styles we have on display. We also offer a tour by appointment of our workshops to view our manufacturing process. During this initial consultation you meet your





Davonport designer who will work with you throughout your project. In this meeting they will discuss with you the kitchen you are imagining for your home and crucially how you plan to use your space. They will listen to you and learn what inspires you, to create a kitchen based on you.

Following these initial conversations your designer will visit your home to survey the space. When we visit you we gain an insight into the style and history of your home, it is only then we see the unique features that make up your home and your lifestyle. Your kitchen will be designed to enhance the most beautiful features of your room and disguise the less attractive ones. Having visited your home your designer will draw up a kitchen design sympathetic to the history and style of your property.

You will then be invited back to the showroom to view your plans and experience 3-dimensional visuals of your design, encouraging you to immerse yourself in your new room. Your designer will work closely with you to finalise the design, making sure it is perfect for you and your home before sending plans

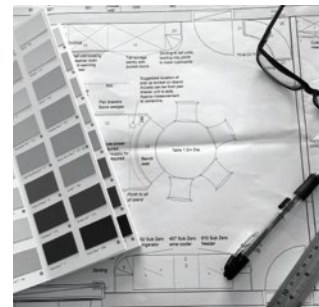
to our workshops for production. All the way through the process you will work with one member of our design team, creating a strong partnership to ensure that you always have a trusted point of contact at Davonport.

### **EXQUISITE PERSONAL DETAILS AND FINISHES**

Our design team have the understanding and expertise to create exclusive, luxury designs to suit any taste or brief. Specific personal touches can also be incorporated, from a family name carved into a pantry to a cutlery tray made to unique dimensions, our design team work closely with our joiners and cabinet makers to achieve exactly what you're looking for.

### **LUXURY APPLIANCE PARTNERSHIPS**

We work with a select group of appliance companies who strive to achieve the same level of luxury kitchen as we do; these include Sub-Zero & Wolf, Miele and Aga to name a few. Our designers will discuss your appliances with you as part of the design process so that you acquire the appliances that are best suited to your style, needs and budget.









# NO ROOM FOR COMPROMISE



Davonport's rich history is the reason we place so much importance on our workshops and the intricate process each and every cabinet goes through in its production. We combine traditional cabinet making techniques with state of the art technologies in order to produce premium quality furniture. World-class craftsmanship with no room for compromise ensures that the quality of every cupboard is truly unsurpassed.

The aesthetics of the cabinet exteriors are important but it's the interior of our cupboards which give them the strength and longevity that we pride ourselves upon. In order to create a cupboard to last a lifetime we use tried and tested methods as standard. For example we use mortise and tenon joints in our cabinets and doors and dovetail joints on the corners of every drawer box.

Only after a piece of furniture has passed our rigorous quality checks does it receive a Davonport seal of approval. We feel so strongly about the quality of our product that we offer a lifetime guarantee on all our cabinetry and craftsmanship.

We are incredibly proud of our furniture and our English workshops within which every piece of Davonport furniture is made. We will happily give you a guided tour of the manufacturing process; from timber and bark all the way through to complete kitchen cupboards packaged for delivery. We invite you to visit our workshops as it's only then that our passion for creating bespoke furniture can truly be appreciated.

# THE BIGGER PICTURE

When you buy your kitchen from Davonport you can rest assured that you are dealing with an environmentally conscious company.

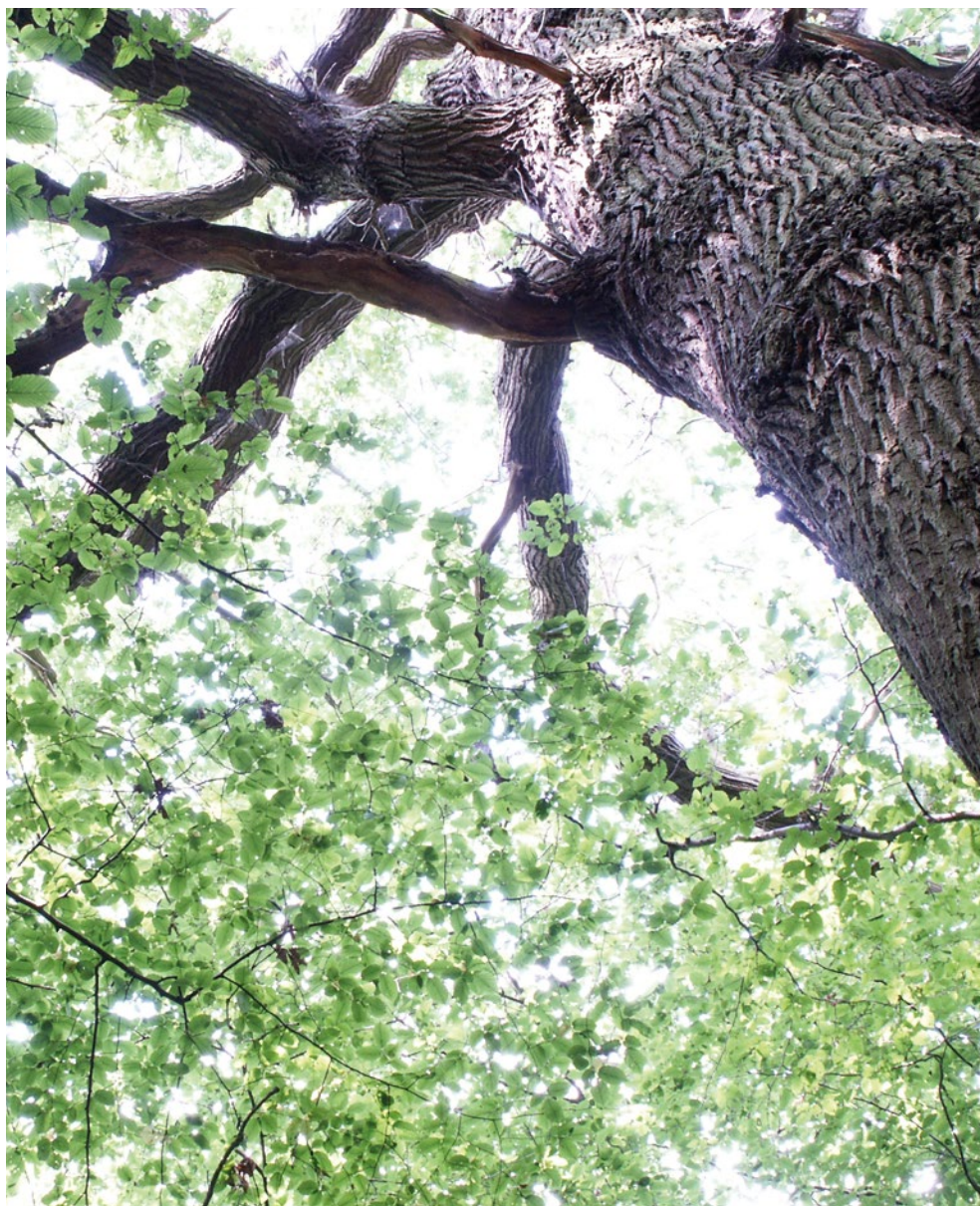
Davonport furniture is all designed and manufactured in England using materials that are sourced from suppliers who match our commitment to the environment.

We strive to minimise our ecological impact without compromising our high standards. Davonport is dedicated to minimising pollution, energy consumption and distribution overheads while also supporting local businesses. Wood is a great renewable resource and if managed sensitively the extraction of timber is not detrimental to the global environment. On the contrary, wood is organic, non-toxic, recyclable and biodegradable. Equally as important, making furniture from wood requires less energy than materials such as steel or aluminium, meaning less carbon dioxide in the environment.

All the timber we use is sourced from suppliers certified by the Forest Stewardship Council, and our eco-friendly attitude means that we do not use any timbers listed by the Convention on International Trade in Endangered Species. When timbers that don't meet our standards are specified, we will always suggest alternatives.

Environmental awareness continues through each and every aspect of a Davonport design and manufacture, including a sophisticated extraction system that recycles off-cuts and collects wood shavings. These are then used to heat our factory, negating the need for fossil fuels.

We continually develop our packaging and warehousing procedures to increase the content of recycled and recyclable material and have reduced our waste by 53% in the last five years.









VEG

MEAT



# TAKING CENTRE STAGE

## ISLANDS

### BELOW

#### Style | Belgravia

To contrast the cream cabinets a statement book matched walnut breakfast bar has been introduced on the island.

### RIGHT

#### Style | Tillingham

In addition to the raised glass breakfast bar this island also features a round chopping block with bespoke chopping boards and burr walnut veneer detailing.

Larger, open spaces have led to an increase in demand for kitchen layouts that *utilise the whole room* rather than just cabinetry lining the walls. An *island* is the perfect solution; filling the room in a beautiful and functional manner.



## ZONING AN ISLAND

The diversity of islands are what makes them so popular. We've designed islands with everything from herb gardens and ice buckets to bread bins built in. In order for an island to be truly multifunctional it is zoned into specific areas for specific jobs. For example a prep sink alongside some clear work surface for food preparation and a refrigerated drawer within easy reach of glassware for serving drinks - practicality has to be at the forefront of

design. The ergonomics of an island rely upon how distinct areas function in unison. For example if an island features a cook top this should be positioned to face the seating area. There should be a natural flow between spaces and interaction between people throughout the room should be easy. Therefore, a well-designed island enables the cook to stand looking out onto the rest of the room rather than with his or her back to what's happening.







ABOVE  
*Style | Mersea*  
Banquette seating  
on an island provides  
a relaxed seating  
area, perfect for  
informal dining.





## HOW TO INCORPORATE SEATING

Creating a designated seating area on an island immediately emphasises the sociable, inviting nature of the kitchen; making it a relaxed space to be used by cook and guests alike. Breakfast bars are very popular as they provide an informal place for guests to sit at the same level as the chef. Having a split level island, where the breakfast bar is raised, establishes it as a distinct area, away from any mess associated with food preparation. An alternative island seating arrangement is banquette seating – where a bench seat is incorporated into the island with a table and chairs added. This creates a charming but informal dining table, perfect for brunch or other casual occasions.

## AESTHETIC CONSIDERATIONS

There is no doubt that an island is a platform on which to make a visual statement. An island can be painted in an accent colour to draw focus or include individual details such as open shelving and glazed doors. An unusual shape island is an alternative option, for example an island which features some curvature. Curves relax us and encourage natural flow; a round seating area or chopping block can be approached from all angles making it feel more inviting. A soft wave or curve can be incorporated across the whole island or just one feature of it, such as the breakfast bar, the design decision is yours.

Islands are astounding pieces of furniture with an infinite range of possibilities. Be ambitious with your plans and discuss with your kitchen designer exactly what it is you want to achieve.

### BELOW

*Style | Audley*  
The round island and breakfast circle juxtaposes the architectural detailing on the mantel, softening the feel of the room.







*Style | Audley*  
The balanced proportions of this room prevent the vast island, large dining table and grand mantel from overpowering the design.



---

# SET IN STONE

## STRUCTURAL CHALLENGES

Whether you have undergone substantial building work or have a property with unique structural considerations, we will create a kitchen that *fits seamlessly* into the structure of your home.

### ORIGINAL FEATURES

High ceilings, open space and original beams; these are all stunning architectural details of a room which give it character. By complementing them with bespoke cabinetry the room as a whole unites and comes to life. From tall units built to fit your ceiling height to an island designed to mould around original beams; opting for a bespoke company who build to order ensures that your kitchen furniture will suit your taste and fit the structural challenges of your property, emphasising the beauty of the features that make your home unique.

### KITCHEN EXTENSIONS

Exposed structural pillars are a common feature in kitchen extensions; the Belgravia kitchen pictured illustrates this. Our client was looking for a modern kitchen with a large island. Therefore the structural pillars necessary for a previous extension were encased within stainless steel to create a striking central column with the island emerging from it. This transforms the pillar from an inconvenient necessity into a contemporary focal point. The stainless steel also reflects light which makes the room feel larger and brighter.



#### LEFT

*Style | Tillingham*  
To protect the beams and pillars in this Grade II listed barn the island was designed to encase them to maintain the building's heritage.

#### RIGHT

*Style | Belgravia*  
A structural column from a previous extension remains so was clad in stainless steel to create an additional modern feature in the room.





---

# OPEN SPACES

## LARGE KITCHENS

*Style | Canterbury*  
Curves feature subtly throughout this room, from the round chopping block on the island to the wave detail on the splashback.

---

A large room is a fantastic blank canvas when it comes to designing a kitchen. The *more space* you have the *more options* are open to you, and bespoke design increases the possibilities.





## ZONING A ROOM

When working with clients who have impressive open spaces the brief often asks for more to be incorporated just than a place to cook, and rightly so. The kitchen becomes a space to dine, relax, chat, study and work, so it's important the design reflects that. Zoning the room will achieve this. By zoning we mean that we break the room up into different areas for specific functions. Food prep, cooking and clearing up zones are fairly standard spaces. Other popular zones include dining, seating and drinks areas. With different parts of the room assigned distinct meanings the practicality of the space develops around how it will be used.



*Style | Tillingham*

A simple shaker kitchen was chosen for this property in order to be sympathetic to the style and atmosphere of the rest of the home.







## TIMELESS LONGEVITY

A pantry is a beautiful and practical piece of furniture which creates a stunning focal point as well as providing additional storage space. From pull out ladders to curved corner pantries, they provide a generous amount of storage and create a sense of opulence in a room. More details about pantries and the various options involved can be found on pages 36–37.

Islands are another fantastic use of space in kitchens of a more generous size. Islands give the centre of the room purpose, both visually and ergonomically. If you are interested in adding an island to your kitchen more information can be found on pages 16–21.



The dresser cabinets with bi-fold doors are ideal for storing small appliances alongside cookbooks and crockery.



The media cabinet with oak top echoes the style and colouring of the rest of the kitchen.



**ABOVE**  
*Style | Holkham*  
 Using the shelf above the sink to display artwork and colourful glassware introduces some vibrancy to the room's industrial colour palette.

**RIGHT**  
 A second pantry cupboard positioned in the dining and seating area of the room assists the continuity of the room's design.







Stood at the door leading in from the front porch there is a clear view all the way through the property, past the bespoke kitchen into the dining and living spaces beyond.

## OPEN PLAN DESIGN

Open plan layouts are increasingly popular as they make the kitchen a more sociable space; gone are the days of an enclosed kitchen purposefully segregated from the rest of the home. A room with successfully zoned spaces retains a natural flow between different areas, giving the room an overall sense of purpose and continuity in design.

Carefully planned and designed to function as much more than a room to cook in, a large kitchen can be a kitchen, dining room, living area and study all at once.





*Style | Mayland*  
The granite work surface and oak breakfast circular top on the island make it a practical food preparation area and an informal socialising space.





# COMPACT COOKING

SMALL KITCHENS

*Style | Audley*  
To prevent the room from feeling crowded small aesthetic details are introduced in subtle ways, as featured with the stepped profile on the cornice.

Bespoke design is a wonderful way to make the *most out of the space* you have, even if the dimensions of your room are modest.





The utility cupboard was designed to house the boiler, vacuum cleaner and other cleaning essentials out of sight but within easy reach.



By choosing to use a bespoke company for a small kitchen project you are far more likely to obtain your dream kitchen as clever design and storage solutions will enable you to fit more into the room than perhaps initially considered.

Amanda came to Davonport for a new kitchen for her converted stable block. The dimensions of her room were small – measuring just 2.1m x 4.2m therefore she was concerned that her dream kitchen was too ambitious for a room of this size.

Amanda's wish list was extensive, she wanted her kitchen to include; an oven, steam oven, warming drawer, hob, boiling water tap, wine storage and a utility cupboard large enough to house her vacuum cleaner and boiler. This was on top of wanting to keep her existing American style fridge freezer. Expert bespoke design realised this wish list to create a beautiful and functional kitchen, which despite its modest proportions feels spacious and light.

Clutter in a small kitchen can totally ruin the atmosphere; therefore it was essential that adequate storage was incorporated to avoid crowded worktops. The utility cupboard was designed to be large enough to fit other kitchen essentials as well as the vacuum cleaner and boiler, as specified in

the brief. The narrow space between the fridge/freezer and the utility cupboard was fully optimised by incorporating a vertical wine rack and bespoke lap tray storage. Internal drawers – where one drawer front opens to reveal multiple drawers within – were also integrated into the design to provide extra storage without complicating the lines of the furniture. The Audley collection was chosen by Amanda as she felt it complemented the heritage of the building with its timeless appearance.

In order to make the room feel as spacious as possible white was chosen to hand paint the cabinetry, encouraging light to reflect around the room. The peninsula which separates the kitchen from the living area features an internally lit glazed cabinet for glassware. This gives depth and the illusion of added space.

Many people assume that their room is simply too small for a bespoke kitchen but in reality there is no such thing. By opting for bespoke design the cabinetry will be made to your specifications, ensuring that every inch of the room is well used. This enables you to make the most of whatever sized room you have; creating a small but stunning and highly ergonomic kitchen.

A walnut internal drawer provides cutlery storage without the need for an extra drawer front, helping to maintain clean lines in the room.



---

## A CLASSIC CENTREPIECE

MANTELS

If you're looking to create a classic kitchen with traditional features a mantel or canopy is the *standalone piece* that will complete this look.





The primary function of a mantel is to house the extractor fan, making it a discreet feature in the room to be in keeping with a traditional design. The columns on either side of a mantel can be designed to include additional storage such as drawers or spice cupboards, to keep all your cooking essentials within easy reach of the hob. The over mantel and corbels which support it can be designed to suit your taste with as much or as little detail as you desire. The Tillingham mantel or canopy is popular with subtle, classic design features. If you are looking for a more architectural mantel or canopy the Audley is much bolder with heavier detail on the corbels and a stepped profile.

A canopy houses an extractor in the same way as a mantel but does not take up any additional work surface. The canopies pictured exemplify how the look of a mantel can be retained whilst leaving your worktop space unaffected. If you're torn between a canopy and mantel reflect on the work surface you already have planned for your kitchen and decide whether you would benefit from additional storage or extra work space.



#### LEFT

*Style | Tillingham*

On either side of the grand mantelpiece is additional storage in the form of drawers and cupboards; perfect for keeping oils and spices.

#### ABOVE

*Style | Audley*

A stepped profile and curved corbel returns give this canopy a bold aesthetic and architectural feel.

#### RIGHT

*Style | Tillingham*

Subtle and unassuming, this canopy sits discreetly within classic and contemporary schemes alike.



# EVERYTHING IN ITS PLACE

PANTRIES & LARDERS

Pantries and larders are *increasingly popular* choices in luxury kitchens and it's easy to understand why when you consider their *versatility*.

*Style | Tillingham pantry Bi-fold doors, a mirrored back and walnut internals provide ample storage for everything from dried and fresh produce to glassware and crockery.*





With a rich heritage and distinctly British feel, the pantry has become something of a kitchen icon. A well designed pantry or larder will offer storage for a wide variety of products. Dried goods, fresh food, glassware, crockery and even small appliances can all be stored in a single pantry. With so many practical benefits it's easy to forget the most influential reason of all; the sheer beauty of such an endearing piece of furniture.

## PANTRY STYLE DESIGN CHOICES

The different styles of pantry are extensive and include our classic Tillingham pantry and walk in larder amongst others. The bespoke nature of a Davonport pantry enables you to fine tune your design further. For example you have the choice of oak or walnut internals as well as the option to include a marble shelf to help keep fresh produce cool. Incorporating a mirrored back adds to the functionality, making it easier to see what is stored towards the back of the shelves. The door style can also be tailored to suit your specific brief. Doors can be bi-fold, glazed or incorporate spice racks on the interiors for added storage – because it's handmade to order, you can specify every feature.

## BESPOKE FINISHING TOUCHES

The bottom half of a pantry is often used for storage of fresh foods such as fruit, vegetables and baked goods. Our handmade vegetable crate drawers allow air flow around the items within, helping to keep your fruit and vegetables fresher for longer. We offer personalisation of drawers, chopping boards and vegetable crates so they are labelled with the foods your family most frequently enjoy. In the past we've personalised our vegetable crates with everything from 'treats & cheats' to 'Charlie's snacks'. We also offer to carve a family or house name above the pantry doors, providing a truly bespoke and handcrafted finishing touch.

With so much choice in design and options for personalisation, there is a pantry to suit every style of kitchen. From a pull out larder unit to an extensive walk in pantry we will create a pantry or larder perfectly built around you.



**ABOVE Style | Holkham corner pantry**  
Tucked neatly in the corner this pantry has spice racks, shelves and drawers for storage of tins, jars and other dried foods.

**LEFT Bespoke hand carved drawers and crates** allow for complete personalisation of your pantry



# INSIDE OUT

INCORPORATING OUTDOORS

We all like to make the most of our gardens, using every last minute of sunshine as best we can. Understandably then, people often want to *connect their garden* with their kitchen, utilising generous natural light and creating easy access to *outdoor space*.

*Style | Audley*  
The roof lantern above the island encourages light to pour into the room, beautiful in every season.



## KITCHENS IN GARDEN ROOMS

The most obvious way to connect your garden and kitchen is to add a conservatory or garden room. This will provide additional natural light and easy access to the garden; a beautiful alternative to an extension. We often work with clients who add a garden room to enlarge their kitchen space in order to create an open plan kitchen/ dining/ living area. Positioning the dining or seating areas in the garden room with the kitchen within the main building is an effective layout. The kitchen will gain additional natural light and the seating areas will benefit from a natural flow to the garden. The Orford project is a stunning example of this; the kitchen is adjoined to a magnificent garden room which houses the living and dining space.

## ALTERNATIVE OPTIONS – ROOF LANTERNS AND BI-FOLD DOORS

A popular alternative to a garden room is a roof lantern. In addition to their beauty and grandeur a roof lantern encourages natural light into the room in a similar way to a fully glazed roof. The Audley kitchens pictured illustrate the elegance that a lantern adds to a room, as well as the stunning natural light.

If you are looking to not only bring in natural light, but also to encourage involvement between the kitchen and garden, bi-fold doors are an option. In the cooler months the winter sunshine streams through and when the weather gets warmer they open up to create uninterrupted flow between the kitchen and garden.

Whether your garden is to be used by children playing or guests enjoying a drink in the sun, the kitchen becomes an extension of the al fresco socialising space. Positioning a seating area close to the doors blurs the line between indoors and outdoors, creating a wonderfully laid back space pushing the boundaries of open plan design to the extreme.



**ABOVE**  
*Style | Audley*  
This kitchen benefits from a roof lantern and bi-fold doors, increasing light as well as making access to the garden easy.

**BELOW**  
*Style | Orford*  
The position of the kitchen island enables the host to prepare food at the island whilst guests enjoy lounging in the warmth of the garden room.









# NINETEENTH CENTURY COUNTRY MANOR

## CLIENT JOURNEY

**CLIENT**  
SARAH & PETER

**LOCATION**  
CHELMSFORD, ESSEX

**COLLECTION**  
FALLOWFIELD

**PAINT COLOURS**  
PIGEON, FARROW & BALL

**WORKTOPS**  
JUPARANA TORRONE  
GRANITE

A growing family called for total reconfiguration of Peter and Sarah's 1821 country manor which included enlarging the kitchen considerably. The rich heritage of the building lent itself to a classic country kitchen, sympathetically designed around the property's architecture.

The Davonport Fallowfield collection is a charming piece of quintessential English design. Peter and Sarah knew at once this was perfect for their Nineteenth Century country manor.

The entire ground floor was to be reconfigured in this 1821 property in order to better maximise the space. The old kitchen was small and enclosed and with the ever increasing demands of family life Peter and Sarah felt the space had to be re-organised. They wanted to turn the existing kitchen into a playroom and optimise the space in the living room by converting it into their new kitchen. This would create a large family space with the playroom leading off of the kitchen, perfect for life with two young children. With so much effort being put into reconfiguring the entire ground

floor, Peter and Sarah were focused on making the kitchen the core family space – “the main thing we felt was that the kitchen needed to be the heart of our home” explains Sarah.

With a generous space to fill and a beautiful period property as a backdrop the design process began. Peter and Sarah wanted a kitchen that was equipped for modern day family life but with a sophisticated and timeless feel, in-keeping with the property. “We talked about the styles that I liked and the history of the house and tried to tie it in” explains Sarah. The Fallowfield collection was exactly what they had been looking for. Its clean lines and elegant but understated feel suits the grandeur and heritage of the building perfectly.

“THE MAIN THING WE FELT WAS THAT THE KITCHEN NEEDED TO BE THE HEART OF OUR HOME” *Sarah*

The walnut breakfast circle on the island provides relaxed seating close to the main preparation and cooking area of the room.







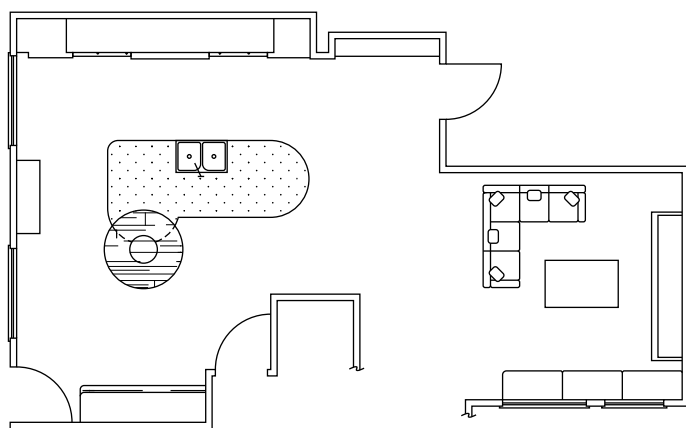




The colours were very important to Sarah; “I had a little mood board of things that I had found and liked, which helped.” A combination of subdued green and creams was decided upon – a subtle balance between contemporary colour schemes and classic design.

In order for the kitchen to function as a practical space to cook and gather with the family it had to have ergonomics at the centre of its design. The island is the dominant feature in the room, but aware that it had to blend subtly with the rest of the house, curved cabinetry and a round walnut breakfast area were added to soften the overall impact of such a large island.

“ONE OF MY GOALS IS NOT TO HAVE MUCH ON THE WORK SURFACE” *Sarah*



The positioning of the kitchen in relation to the playroom makes it easy for Sarah and Peter to keep an eye on their children whilst cooking.

LEFT This wide but shallow larder cupboard was designed with the primary focus of storing dried food with a mirrored back making it easier to see the contents of the shelves.

RIGHT The drawers and spice cupboard built into the mantel surround subtly add storage, creating the ideal space for oils, herbs and spices within easy reach when cooking.





“WE TALKED ABOUT THE  
STYLES THAT I LIKED AND  
THE HISTORY OF THE HOUSE  
AND TRIED TO TIE IT IN” *Sarah*



The best seat  
in the house,  
a bespoke  
upholstered  
window seat.

“If you have a beautiful kitchen it seems a shame to clutter it with other things, so one of my goals is not to have much on the work surface” explains Sarah. With a growing family and all the kitchen clutter that comes with it, Peter and Sarah required a kitchen with a copious amount of storage space. Two pantries were incorporated into the design – one with bi-fold doors for all of Sarah’s cookery books and baking appliances

to be stored, whilst the second larger cupboard is for storage of dried food.

Peter and Sarah’s kitchen has all the charm and traditional touches needed to suit their Nineteenth Century home but with modern features that make it a useful, family friendly space for them and their young children. It is the perfect balance of old and new with a true sense of timelessness and endearing quality.





A second pantry cupboard was designed to store Sarah's baking appliances and cookbooks with bi-fold doors for easy access.







# SOUTH WEST LONDON TOWNHOUSE

## CLIENT JOURNEY

**CLIENT**  
BEN & CARLA

**LOCATION**  
SOUTH WEST LONDON

**COLLECTION**  
BELGRAVIA

**PAINT COLOURS**  
LAMP ROOM GREY &  
DOWNPIPE,  
BOTH FARROW & BALL

**WORKTOPS**  
ORGANIC WHITE QUARTZ

The four metre long island with banquette seating in Carla and Ben's kitchen is the core of this multifunctional room designed to be enjoyed at Saturday night dinner parties and quiet Sunday breakfasts alike.

Kitchens are frequently multi-functional spaces, designed to be used for every part of our increasingly complex lives. Carla and Ben's kitchen was no exception. Their six bedroom home in South West London was chosen for its proportions – a generously sized garden and large living spaces were perfect for their growing family. With three children, two dogs and two cats this was a home that had to be robust and ready for family life, nowhere more so than the kitchen. Ben and Carla also enjoy hosting dinner parties; therefore it was crucial that their kitchen had to function as not only a comfortable and welcoming family space, but also the hub for their Saturday night entertaining.

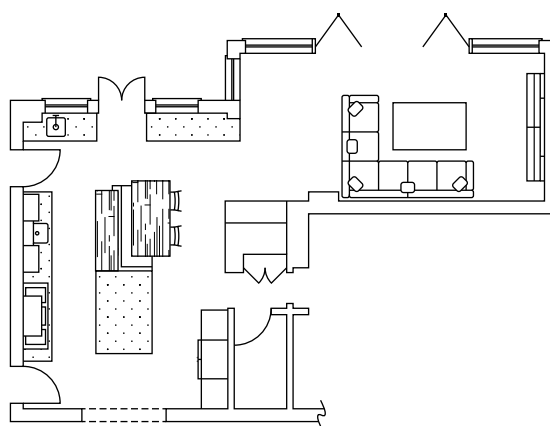
Aware of the challenge that lay before them, Carla and Ben knew from the outset that only a bespoke kitchen company would be suitable for their project. On finding Davonport Carla felt a huge sense of relief; "because everything is custom-made, we knew we could have the room exactly as we

wanted it". The open plan layout of the property meant it was important that the kitchen connected to the formal dining room and relaxed seating areas that adjoin it, and above all else the room had to be multifunctional.

The sheer size of the kitchen lent itself to featuring a large island – at nearly four metres long this forms the core of the design. A banquette seating arrangement was designed for one end of the island, providing an informal dining area and somewhere that the children could gather to do their homework or catch up on the events of the day. The cooking zone is positioned on the opposite side of the room to the table, ensuring that there is no potential danger of hot spillages around the seating area. The kitchen flows into a relaxed family room with a sofa and television. This means that Carla and Ben can be stood in the kitchen cooking whilst still involved in the goings on in the next room.

**"BECAUSE EVERYTHING IS CUSTOM-MADE, WE KNEW WE COULD HAVE THE ROOM EXACTLY AS WE WANTED IT"** *Carla*






ABOVE  
A combination of grey tones with deep red and walnut accents create a beautiful sense of contemporary warmth.

The layout of the room is designed to be very sociable with family and guests encouraged to move between the kitchen and living space freely.





“WE LOVE THE  
WARMTH OF THE  
WALNUT WITH THE  
COOL GREY HAND  
PAINTED FINISH” *Carla*





---

**SOUTH WEST LONDON TOWNHOUSE**  
**CLIENT JOURNEY**





The breakfast cupboards by the dining table helps organise busy family breakfasts with the toaster, coffee machine and other accessories grouped together.

“THE LAYOUT SWITCHES EASILY FROM A CRAZY ROOM FULL OF CHILDREN TO AN ELEGANT SPACE TO RELAX WITH OUR FRIENDS IN THE EVENING. PERFECT” *Carla*

Ben is a keen cook who particularly enjoys experimenting with oriental cuisine. The large cooktop features two induction hobs and a gas wok hob – enabling Ben to indulge his passion. This is particularly useful when hosting dinner parties, a combination of appliances which also includes two ovens and a warming drawer ensures that Carla and Ben have all the practical essentials for sophisticated, elegant entertaining. The dining room which leads off of the kitchen creates a stylish area for more formal hosting.

The combination of walnut, hand painted grey cabinetry and red accents gives this room a beautifully modern feel. “We love the warmth of the walnut with the cool grey painted finish” explains Carla.

A light grey was used to hand paint most of the cabinetry, with a darker grey on the island. This mix of greys creates a contemporary feel whilst pops of colour – the red glass splashback and the walnut cabinetry – provide added personality. The aesthetics of the room mirror its dual purpose; a cool and relaxed space with sophisticated and stylish accents.

Carla and Ben are thrilled with their new kitchen – designed for day to day life and sophisticated entertaining in equal measure. “The layout is practical for our family life and it also works brilliantly when we are entertaining. It switches easily from a crazy room full of children and dogs in the day to an elegant space to relax with our friends in the evening. Perfect.”

Carla opted for a dishwasher drawer next to the sink specifically for glassware when entertaining.









# COASTAL RETREAT

## CLIENT JOURNEY

**CLIENT**  
SANDRA & IAN

**LOCATION**  
ORFORD, SUFFOLK

**COLLECTION**  
ORFORD

**PAINT COLOURS**  
PAVILION GREY &  
DOWNPIPE,  
BOTH FARROW & BALL

**WORKTOPS**  
LYRA SILESTONE

Following a move to the country and extensive building work on their former lodge house, Ian and Sandra were looking for a kitchen that utilised their bright, airy extension whilst channelling the rustic feel of the Suffolk shoreline.

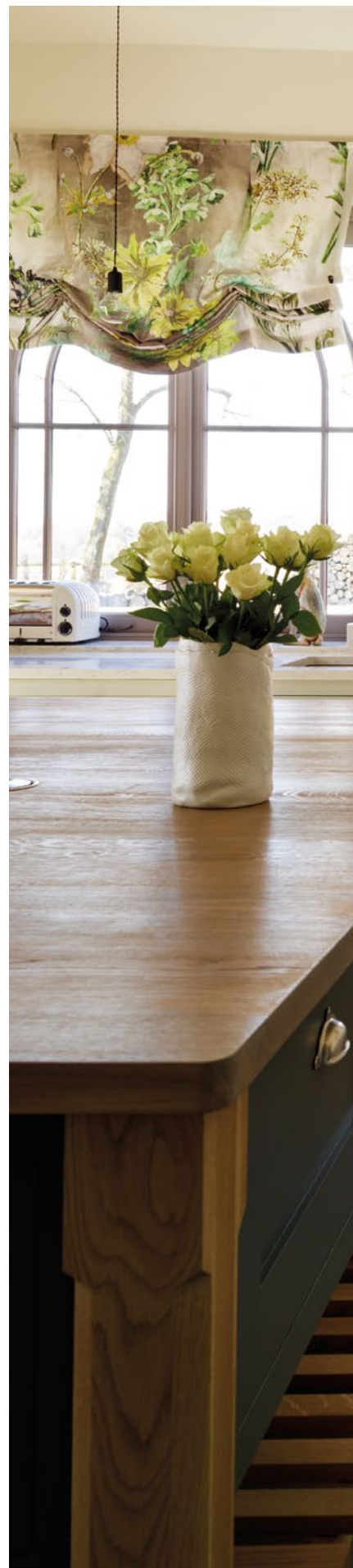
Nestled in the English countryside close to the Suffolk coast this former lodge house is the idyllic setting of our Orford project. Always top of Sandra and Ian's wish list was a large, open-plan kitchen; in order to achieve this a substantial extension was necessary. "We had one set of plans that didn't get the green light because of the area, so we had to resubmit, which delayed things somewhat." Despite a slightly lengthened timescale, Sandra and Ian's plans to create their dream kitchen didn't falter.

"The house as we bought it, just wouldn't accommodate the nice open-plan kitchen we wanted. Neither did it have a conservatory which was important to us" explains Sandra. With the garden room extension progressing, it was time for Sandra and Ian to begin considering their options for the kitchen furniture. "I just wanted something as plain as possible" – upon seeing the classic shaker style cabinetry that Davonport is known

for, they began the design process. Design meetings helped fine-tune exactly what they wanted to achieve; a sociable, inviting space that connects effortlessly with the conservatory. The large central kitchen island which forms the core of the space was a particularly important feature for Sandra. "Because of the size of the room the layout was already in my head; I knew it needed a big island, but lots of people thought it was a mistake. However, our Davonport designer and I agreed that it was the size the room required."

When it came to colour schemes Sandra wanted something in keeping with the uncomplicated shaker-style furniture which she had set her sights upon from the outset. The soft grey used on the base units is grounded by the darker tone on the island and pantry cupboards. The weathered oak work space on the island and oak internals throughout the room add a rustic feel, echoing its rural setting.

**"BECAUSE OF THE SIZE OF THE ROOM THE LAYOUT WAS ALREADY IN MY HEAD; I KNEW IT NEEDED A BIG ISLAND"** *Sandra*





The warming drawer on the island is perfectly positioned for transferring dishes from the hob to the drawer to maintain warmth or continue cooking.







To reflect the relaxed coastal positioning of the property the décor features muted tones, weathered oak and rustic stone flooring





## COASTAL RETREAT

CLIENT JOURNEY



As a keen baker Sandra wanted a pantry cupboard to store some appliances, ingredients and baked goods together.



**RIGHT** The open pot board on the island is ideal for storing heavy pots and dishes.

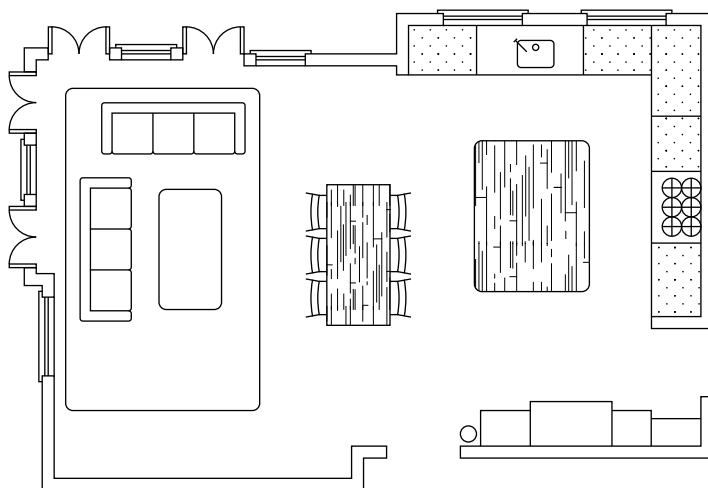
**FAR RIGHT** Open shelves next to the tall cupboards provide great open storage for cookbooks.



In her quest to keep the look of the room simple and understated Sandra was keen to reduce the amount of wall cupboards in the space; “I’m a bit over wall cupboards and besides I’m not very tall so I’d need a ladder to get into them.” Instead she opted for a single bank of tall cupboards running along one wall to incorporate the fridge, freezer and pantry. “It’s the most fabulous place to cook. The tall larder built-in cupboard with all my baking equipment in is fantastic because I can get to it easily from the island, but I can also shut it off.”

The flow between the kitchen and living space is totally uninterrupted and the combination of colours and textures enhances the rustic, coastal atmosphere in the space. Individual features such as the open potboard really strengthen the feeling of relaxed homeliness and whilst this is a stunning room with huge aesthetic appeal, above all else it’s a fully functional kitchen designed to be enjoyed by chef and guest alike. “The relaxed feel of the whole space means I’m never fazed about how many pots and pans I have out or how many people I might have to feed.”

**“THE TALL LARDER BUILT-IN CUPBOARD... IS FANTASTIC BECAUSE I CAN GET TO IT EASILY FROM THE ISLAND, BUT I CAN SHUT IT OFF”** *Sandra*









BREAD

# THE PERFECT BLEND

## CLIENT JOURNEY

**CLIENT**  
JULIE & NEIL

**LOCATION**  
KELVEDON, ESSEX

**COLLECTION**  
TILLINGHAM

**PAINT COLOURS**  
BESPOKE COLOURS  
FROM DAVONPORT

**WORKTOPS**  
CLOUDY BLACK & MORE  
QUARTZ

A careful balance between traditional features and modern design was required for Julie and Neil's Georgian inspired home. The 2.6m high ceilings are accentuated by the grand mantel whilst the sophisticated colour palette introduces a contemporary edge.

For the kitchen in their Georgian style new build Julie and Neil had contrasting views on what they were looking for. For Neil the dream was a traditional kitchen with a gorgeous mantel to emphasise the 2.6m high ceiling, whereas Julie liked the simplicity of modern design. "We wanted a blend of classic and contemporary" explains Julie. "Our Davonport designer was very good at creating a design with traditional features combining shaker-style doors and the grand over-mantel, but interpreted with clean lines and in a modern mix of greys".

With a precise balance between classic and contemporary required Julie and Neil placed great importance on finding the right company to create their dream kitchen. After an initial design consultation Julie and Neil felt confident that Davonport was perfect for their brief. "I loved the look of the furniture and could see that the cabinetry is

beautifully made" explains Julie, "we also liked the fact that everything is made locally, and to our exact specification."

Deciding on the layout of their new kitchen was relatively simple as the layout of the previous kitchen served as a guide. However, the island in their old kitchen was quite small so Julie was keen to introduce a larger, more complex island in their new room. "I wanted more work surface for preparing food, and space to create a sociable area with bar stools. The new island makes much better use of the space, and creates the sociable hub of the room." The island became the core of the design – a walnut breakfast bar was introduced which is perfect for Benjamin, Julie and Neil's son, to sit and catch up after a day at school. Integrated chopping boards and open shelving are also incorporated which add to the beauty as well as functionality of the island.

**"I LOVED THE LOOK OF THE FURNITURE AND COULD SEE THAT THE CABINETRY IS BEAUTIFULLY MADE"** *Julie*







ABOVE Julie was keen to introduce a sociable aspect to the design of the island; the walnut breakfast bar fulfils this, creating an informal place to sit.

LEFT As a keen tea drinker Julie requested a specific place to store teabags. The small drawer in the mantel surround was ideal, with distinct compartments for different flavoured teas.





Hand carved chopping boards slot neatly into the island, each engraved with a different food group to avoid cross contamination during meal preparation.





## THE PERFECT BLEND

### CLIENT JOURNEY

#### RIGHT

A contemporary colour scheme balances some of the more traditional features in the room, creating the classic but contemporary aesthetic that Neil and Julie were keen to achieve.

#### OPP PAGE

The grand mantel acts as a stunning focal point in the room, designed to accentuate the 2.6m high ceilings in the property.

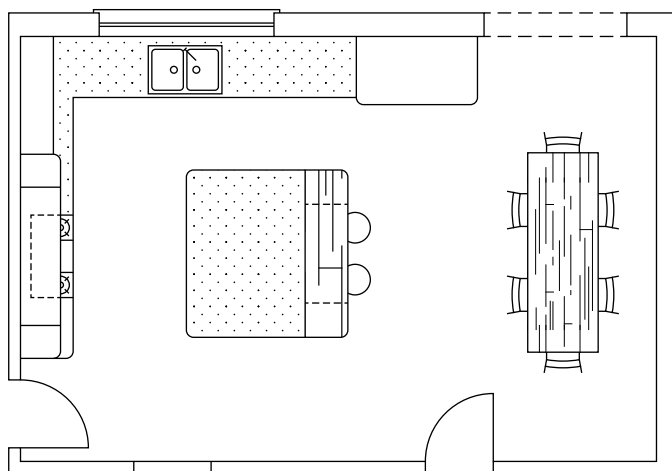


As per Neil's vision of his new kitchen, a grand mantel frames the range cooker and hides the extractor fan as well as providing clever additional storage and adding to the room's atmosphere. In order to balance the proportions of the mantel, designed to accentuate the high ceilings in the room, the fridge and freezer are housed in an equally tall cupboard.

The uncomplicated layout of the room enables all focus to be drawn to the furniture itself with standout features, such as the mantel and open shelving with arched rail on the island, catching the eye. The completed project is just as Julie and Neil had envisaged – classic design features implemented in contemporary ways to create the perfect balance between traditional and modern. The grey/green tone on the cabinetry is modernised by the statement darker hue on the island. The Nickel cup handles throughout the room also serve as a subtle contemporary accent.

Opening onto a dining area, this kitchen was always designed to be an enjoyable space that's easy to use, this has certainly been the case for Julie and Neil; "it's a room that now feels elegant and ideal for entertaining and family life."

**"IT'S A ROOM THAT NOW FEELS ELEGANT AND IDEAL FOR ENTERTAINING AND FAMILY LIFE"** *Julie*













# FROM DESIGN TO REALITY

## CLIENT JOURNEY

**CLIENT**  
GRACE & HENRY

**LOCATION**  
ONGAR, ESSEX

**COLLECTION**  
TILLINGHAM

**PAINT COLOURS**  
PAVILLION GREY &  
STIFFKEY BLUE,  
BOTH FARROW & BALL

**WORKTOPS**  
BIANCA MASSA QUARTZ

The story behind Grace and Henry's kitchen was a brief fundamentally dictated by the grandeur and elegance of their Georgian property's architectural appeal. Their wish list included a pantry, a beautiful island and a wall panelled snug to create their dream family kitchen.





Grace and Henry's period property in a quaint Essex hamlet required a kitchen to match the grandeur of the rest of the house. Every aspect of their Georgian home exuded quality; from the large, heavy internal doors to the wide, grand hallways, as with every kitchen we design it was crucial that the kitchen connected to the rest of the house.

There were a few features of the old kitchen that Grace and Henry liked, such as the island overlooking the garden and the position of the sink; however aside

from this they were looking for a total revamp of the space to enhance their newly completed structural work. The utility room walls were removed to create an open space for their new snug. Also three sets of French doors which lined the back wall of the house were replaced with bi-fold doors, opening the kitchen onto the garden and introducing a more contemporary feel in the space.

The age and style of the property presented a few design challenges. For example the low windowsills, which are

**“CREATING A SENSE OF TIMELESS LONGEVITY WAS ALWAYS THE AIM, COUPLED WITH MAKING THE ROOM A FAMILY FRIENDLY SPACE”**



The grandeur and heritage of the house has been recognised in the room's design whilst the blue island introduces a contemporary edge.

## FROM DESIGN TO REALITY

### CLIENT JOURNEY



Grace chose the wording for her carved pantry drawers and crates, opting for the foods that the family enjoy most.

typical of Georgian period properties, had to be considered. The sink in their previous kitchen was positioned directly in front of the window – a feature Grace was keen to keep. As the cabinetry and sink would sit higher than the windowsill it was designed with easy access for cleaning and aesthetics from the garden in mind. Another challenging factor of the property was the structural pillar from

a previous extension which now sits in the centre of the room. The island was designed to wrap around it – with the dining table one side of the column and the food preparation area on the other. The bespoke nature of all Davonport furniture made structural challenges such as these easy to work around; simply extra aspects to factor into the wider design.





Grace picked an antique mirror splashback to modernise the classic mantel design.

## FROM DESIGN TO REALITY

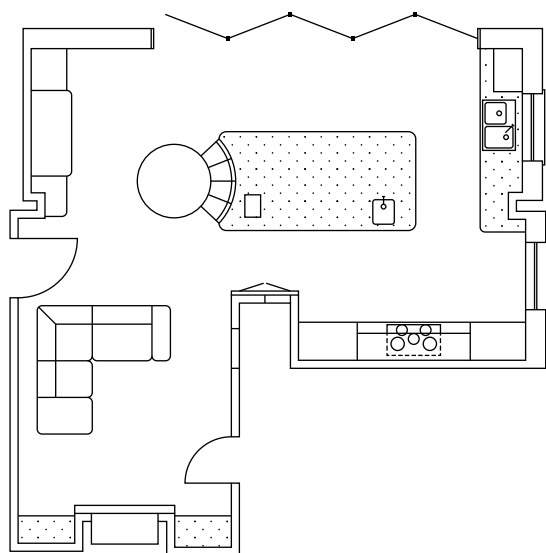
### CLIENT JOURNEY

Though Grace and Henry knew what they wanted to achieve they were open to our suggestions on exactly how to realise their dream kitchen. For example, after their initial visit to our Colchester showroom a pantry topped Grace and Henry's wish list. In order to place the pantry in its most practical position we suggested blocking one of the doors into the kitchen. This allows the pantry to sit comfortably in the room without infringing upon other areas; utilising the space in the kitchen as a whole.

Part of the brief from Grace was that she wanted to incorporate an existing dining table to be used as a relaxed dining space for their young son. We suggested adding a concave bench seat on the end of the island which curves around the circular dining table. The deep buttoned bench seat becomes a focal point in the room; adding style and sophistication to this family kitchen.

One stand out feature of the space is the tailor made wall panelling in the snug. The snug was an important part of the original brief and the intricacy of the panelling developed as the kitchen design evolved. The panelling echoes the style of the doors and colour in the kitchen, helping to connect the two spaces. The panelling was the most challenging part of the project; we designed it to work around existing doors and incorporate hidden access to the concealed boiler.

The success of Grace and Henry's project was largely due to the relationship between the designer and client, who had lots of ideas of how they wanted to use their space and were open to our design suggestions and solutions. Together we were able to create a room that perfectly fitted their brief as a functional family kitchen with grandeur and elegance in-keeping with their stunning period home.



“GRACE AND HENRY’S GEORGIAN HOME ALREADY HAD SUCH A RICH HISTORY THAT WE DESIGNED THIS KITCHEN TO ENHANCE THE PROPERTY’S EXISTING HERITAGE”







ABOVE The wall panelling in the snug has been designed to echo the cabinet doors in the kitchen.



LEFT Additional bespoke details such as the curved bench seat and cupboard with pull out coffee shelf enhance the ergonomics of the room.







## PERFECTLY PLACED IN OTHER ROOMS

The *way we live has changed*, our homes used to be made up of small box rooms each with a specific purpose; this is no longer the case.

Every aspect of this boot room was custom made to the client's brief, even down to the size of the turned coat pegs.







A TV surround and bench seat were designed to store children's toys and provide a comfortable spot to perch in the sun and look out over the garden.

Many new properties are open plan and older houses are frequently renovated to open up the ground floor and create one free-flowing space. Aside from distinct areas to bathe and sleep, other day to day activities are increasingly happening in one, larger room. As a result of this we meet clients who want to ensure that there is continuity between different areas within one larger space.

It's important that the kitchen connects aesthetically to the rest of the home. Therefore we are often asked for media cupboards, dining tables and even wall panelling to complement the kitchen.

If you're looking for bespoke furniture for another part of your home we would gladly discuss this with you. Our past projects have included boot rooms, snugs and studies. Our expertise in creating luxury bespoke cabinetry can be applied throughout the home.

So whether you're looking for something to store your children's toys, display art upon or to house the latest technology, we will apply expert design and exquisite craftsmanship to create beautiful handmade furniture designed and created around you.

From media cabinets to bespoke dining tables, all of our furniture is made in Colchester to meet your specific brief.



# TO START THE JOURNEY

From the initial design concept to the finishing touches...

Now that you have viewed some past examples of our work our aim is to make your enquiry as easy as possible. You can either email or phone our office to speak to a designer, or call into one of our showrooms to share your ideas for your project.

Feel free to email your plans to us prior to your showroom meeting, ready for us to discuss them with you. Once we have an idea of the design and size of the project we will provide you with an indication of cost. Following an initial consultation in the showroom, we will arrange for one of our designers to visit your home to take measurements and get a better idea of the space.

Our designers will pay close attention to your requirements and create a design that is sympathetic to your home. Once we have created a design solution for you, we will invite you back into the showroom to review and discuss the design over a cup of coffee.

Our talented team of designers draw each project to a large scale to ensure every detail is correct from the start. By setting out our drawings clearly and accurately we can guarantee that every detail is understood by the entire team.

To find your nearest Davonport showroom, please feel free to contact us by telephone, email or via our website.













FOR  
THOSE  
WHO  
APPRECIATE  
THE  
DIFFERENCE





0845 468 0025 • [www.davonport.com](http://www.davonport.com)  
Davonport House, Peartree Road, Stanway, Colchester, Essex CO3 0LQ