

Create  
your  
personal  
space



# Create your personal space

# When choosing Dansani you will get

- Assurance in selecting a bathroom expert with more than 35 years of experience
- Danish Design and solid craftsmanship manufactured in Denmark
- Sustainable products in order to protect and care for our environment
- Easy and fast delivery all year round

## Index

### Match shower

Inspiration	6
Price list	27
Product information	32
Dimensions	34

### XXL shower

Inspiration	36
Price list	46
Product information	48
Dimensions	49
Shower tray	50



### EasyCare makes cleaning much simpler

---

When choosing Dansani Showers, you have an attractive, clear glass surface with minimum cleaning effort required. EasyCare is a German, environmentally-friendly product, which is certified by the independent laboratory SGS Institute Fresenius in accordance with the OECD Guideline 2009. Dansani's Match Shower series is coated with the tough and environmentally-friendly EasyCare treatment as standard, making it harder for dirt and limescale to deposit. Even after the glass has been wiped 30,000 times. Just wipe the glass with a soft cloth after use, and your glass will look great for many years to come.



## Match shower

**Create a shower solution that fits perfectly to your bathroom, no matter its size and shape**

The Dansani Match series offers a wide range of shower screens and doors with a minimalistic design, featuring quality and functional details throughout. Based on seven simple basic models in various sizes, you can create endless combinations and find the perfect shower solution that fits your bathroom and your needs.

We have built-in features to the design that are simple with attention to detail that may not be obvious but which will bring you pleasure everyday.

Our range of models, sizes and combinations make it easy for you to choose the shower solution that best fits your bathroom and your requirements.



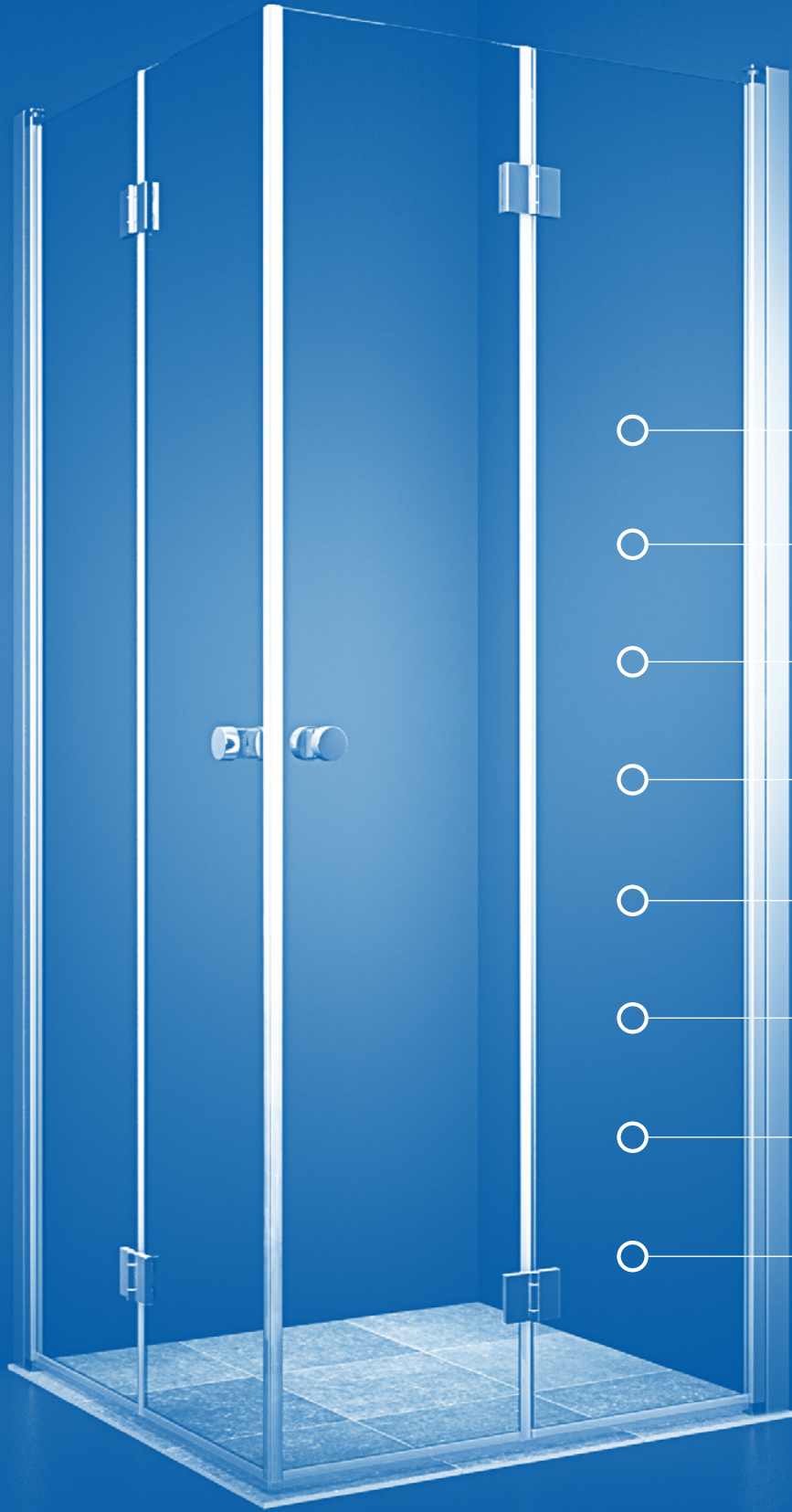
## XXL shower

**Large, user-friendly sliding door solution with a functional design**

Dansani XXL showers are extra large solutions with sliding doors, in uncompromising quality and modern design. The sliding doors are extra wide – so now, if you have a large bathroom, you will also be able to swing your arms out under the shower.

With this solution there is no need for compromise. When you install wide sliding doors, you need not worry about having the space to open and close the doors, because the sliding doors open to the side. In that way the sliding doors do not take up space in the room.

Dansani XXL can be combined, e.g. with one or two side walls – as a corner solution or as a free-standing shower screen.



# Dansani Match

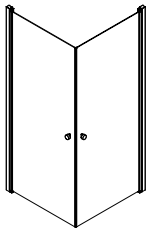
Create a shower solution that fits perfectly to your bathroom, no matter its size and shape

- All models are reversible so that you can use them both on the right and the left side without having to adjust them or use tools
- Both standard and asymmetric solutions are possible, to make optimal use of space
- Elegant and timeless look featuring slim, rectangular profiles in satin or black matt finish
- Perfect installation on off-square walls and on uneven flooring through various adjustment options
- Height of 200 cm provides efficient shower screening, especially if the shower head is installed on the ceiling
- 6 mm clear safety glass. Selected models also available with frosted glass
- Easy cleaning and maintenance through the EasyCare treatment on the inside
- 10 years warranty on manufacturing faults

# Classic and practical solutions for smaller bathrooms

## TWO HINGED DOORS

When the enclosure is not in use the doors simply fold back on themselves into the corner freeing up valuable space in small rooms.



A + A



80 cm A+A - Frosted glass, satin

Hinged door 471.- Art. no. A81-02 /  
Hinged door 471.- Art. no. A81-02



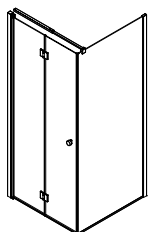
80 cm A+A - Clear glass, satin

Hinged door 390.- Art. no. A81-01 / Hinged door 390.- Art. no. A81-01



**FIXED SHOWER PANEL AND BIFOLD DOOR**

Very practical in the small bathroom, as the door opens inwards into the wet area. No water drops on the floor outside – the perfect way to start or end the day.



B + D + 4



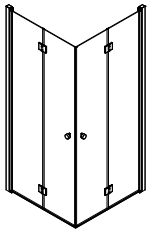
**80 cm B+D+4 - Clear glass, satin**

Bifold door 471.- Art. no. B81-01 / Fixed shower panel 390.- Art. no. D81-01 /  
Telescopic support rail 63.- Art. no. 1600503

## Intelligent solutions for very small bathrooms

### TWO BIFOLD DOORS

A smart solution where both doors can be folded in when you are not using the shower enclosure, so they take up as little space as possible in the room. The bifold door can also be combined with other doors as well as fixed shower panels.



B + B

The clever bifold door also solves the problem with water dripping onto the floor when the door is opened. The doors fold into the wet area thereby keeping the water inside. This folding function also provides a large opening as well as room for shower valves and other fittings.



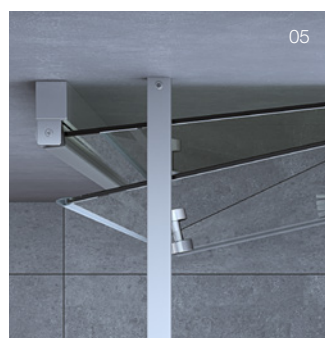
90 cm B+B - Clear glass, satin

Bifold door 471.- Art. no. B91-01 / Bifold door 471.- Art. no. B91-01

## Mindful design

The simple and stylish design behind the Match profiles, with no sharp edges, creates a light, airy and timeless look. Still, these profiles feature some carefully planned features to make sure that you get a stable and well-functioning shower solution that makes you happy for many years to come.

New!  
Profiles in black  
matt from  
1 Jan. 22.



01 The simple profiles conceal a rise and fall hinge action, as well as the possibility of adjustment to ensure the doors operate perfectly every time. A cover cap finishes the overall look. The profiles are available in satin or black matt.

02 Simple and ergonomic knob style handle comes as standard with all door versions.

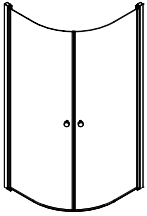
03 The clever bifold hinge folds the door together taking up next to no space yet providing full access when needed.

04 On the inside of the bifold door the hinge part is concealed and flush with the glass panel. Beautiful, practical design in action.

05 The telescopic support rail can be adjusted. See more solutions in the price list.

### TWO QUADRANT HINGED DOORS

Simple and stylish enclosure with two curved shower doors. The doors open both in and out freeing up valuable space when not in use.



E + E

New!  
Profiles in black  
matt from  
1 Jan. 22.



90 cm E+E - Clear glass, black matt

Quadrant hinged door 390.- Art. no. E91-03 / Quadrant hinged door 390.- Art. no. E91-03



90 cm E+E - Frosted glass, satin

Quadrant hinged door 471.- Art. no. E91-02 / Quadrant hinged door 471.- Art. no. E91-02

# Furnish all the way up to your shower solution

## TWO HINGED DOORS WITH IN-LINE PANELS

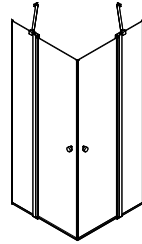
In a small room you can use the space optimally by choosing the hinged door with in-line panel. This option lets you furnish close up to the enclosure itself. The perfect way to exploit limited space. The doors can fold inwards, so the shower solution takes up the least possible space when not in use.



**90 cm C+C - Clear glass, satin**

Hinged door with in-line panels 390.- Art. no. C91-01 /

Hinged door with in-line panels 390.- Art. no. C91-01



C + C



As standard, the hinged door is supplied with a wall support.

## Design your shower room

The flexible assortment of Match enables you to combine, mix and match to create the perfect solution to meet your requirements. Timeless design built to last for many years to come.



01 The design of the profiles is simple and stylish. No visible fixings or screws showing, and the profiles are finished off with perfectly matching covers.

02 The magnetic seal keeps the doors shut when in use. The seals have been developed with a special matt surface that makes daily use a pleasure as the doors open and close softly and easily.

03 The smart floor profile kit available as an additional part ensures the water stays just where you want – inside the enclosure. The floor profile can also be retro fitted at a later stage if required. See more in the price list.

04 The fixed shower panel includes an alternative floor bracket for a lighter wetroom look.

05 An extra high PVC seal can be added, if the floor has a large fall. This stops water running outside the shower area. More details in the price list.

06 For recess doors a wall profile is available with a magnetic seal. If you fit the wall profile for a recess, the door can only open outwards. More details in the price list.

## Avoid water splashes on your furniture

### FIXED SHOWER PANEL

Classic and simple wetroom walk in shower enclosure with either wall support or telescopic support rail. Please note further details about support for fixed shower panels on page 28. Open fixed shower panel solutions are only recommended for wetroom installations.





### HINGED DOOR AND FIXED SHOWER PANEL

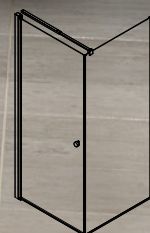
This solution enables you to make the most of your shower room, perhaps having a larger basin than you thought possible or maybe a further storage cabinet.





**80 cm A+D+4 - Clear glass, satin**

Hinged door 390.- Art. no. A81-01 / Fixed shower panel 390.- Art. no. D81-01 /  
Telescopic support rail 63.- Art. no. 1600503



A + D + 4

## Bath and shower area in one solution

### BATH PANEL WITH HINGED DOOR

Say goodbye to the shower curtain with an elegant glass panel that creates the feeling of much more space in the room. The glass shower door can be placed up against any brassware so that the screen takes up as little space as possible. The wall support is supplied as standard.



# Walk-in shower with lots of space

## TWO FIXED SHOWER PANELS

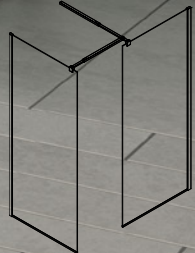
Available in a variety of size combinations – have it your way. For lots of space and plenty of room to move around, this walk in wetroom enclosure is perfect if you want an elegant solution with a very open minimalist look. Available with either support rail, wall supports or telescopic support rails to suit. Open fixed shower panel solutions are only recommended for wetroom installations. Please see the price list for details on fixed shower panel support options.



New!  
Profiles in black  
matt from  
1 Jan. 22.

Can also be installed with the floor bracket instead of the floor profile for a lighter look.

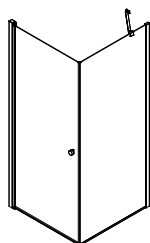
**80 cm D + D + 4 (2 pcs.) + 5 - Clear glass, black matt**  
Fixed shower panel 390.- Art. no. D81-03 / Fixed shower panel 390.- Art. no. D81-03 / Telescopic support rail 63.- Art. no. 1603503 / Telescopic support rail 63.- Art. no. 1603503 / Connector kit 17.- Art. no. 1603504



D + D + 4 (2 pcs.) + 5

### HINGED DOOR AND FIXED SHOWER PANEL

If your bathroom is narrow or long, a good choice could be a fixed shower panel to create a spacious solution. If you have enough room, why not combine the fixed shower panel with a 100 cm hinged door creating a substantial showering area. Can be installed with wall support as well as fixed or telescopic support rails. See more in the price list.



A + D + 2/3



**80 x 140 cm A+D+2/3 - Clear glass, satin**

Hinged door 390.- Art. no. A81-01 / Fixed shower panel 549.- Art. no. D141-01 /  
Wall support 63.- Art. no. 1600508

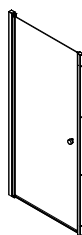
# Recess solutions with a variety of options

If you require a shower door for a recess application, Match offers you three different solutions. Select the model that suits your particular shower room best and rest assured you have made the right choice. The recess doors can open both inwards and outwards, so you always have access to the shower space. However, together with the wall profile for a recess, the doors only open outwards. The doors can also be fitted to angled recesses with a 45° kit, available as an extra item. More details in the price list.



## HINGED DOOR

This simple recess hinged door gives good access in and out of the wet area and comes in several sizes.

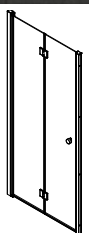


A + 8



## BIFOLD DOOR

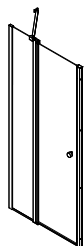
Very practical choice for the small room as the bifold door opens inward into the wet area. This solution also ensures that all water remains inside the recess.



B + 1

**HINGED DOOR WITH  
IN-LINE PANELS**

Smart solution that enables you to place furniture close to the shower door, thereby maximising the space at hand.



C

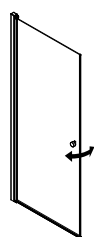


90 cm C - Clear glass, satin

Hinged door with in-line panel 390.- Art. no. C91-01 / Wall profile for recess 160.- Art. no. 1600501

### HINGED DOOR

For even the smallest of rooms including an effective showering solution in the guest shower room is possible using the Match hinged door. Simply fold the door against the wall when not in use, and open up when required.



A

The built out wall hides all services required while at the same time provides the perfect setting for adding a great showering solution.



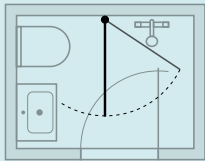
80 cm A - Clear glass, satin  
Hinged door 390.- Art. no. A81-01



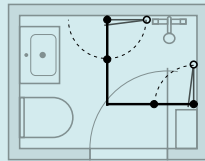
# No room for a shower?

Match from Dansani - the ideal problem solver and of course with easy-clean glass.

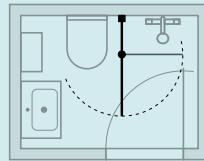
## 120 X 160 CM



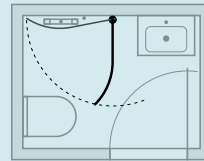
A91



B81+B81

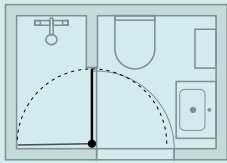


C91

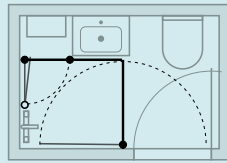


E81

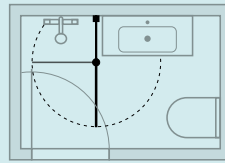
## 120 X 180 CM



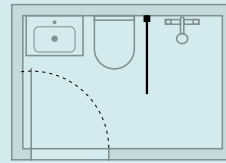
A71



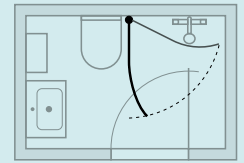
B91 + A81



C101

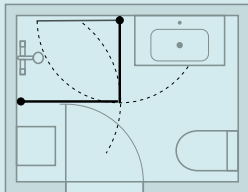


D71

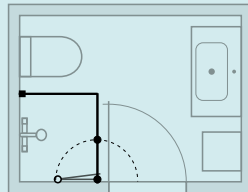


E91

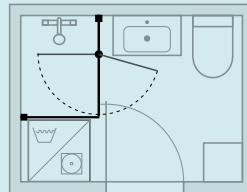
## 150 X 200 CM



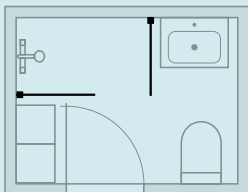
A81 + A91



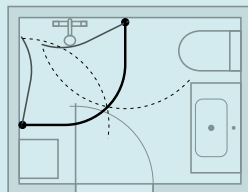
D81 + D71



C91 + D71



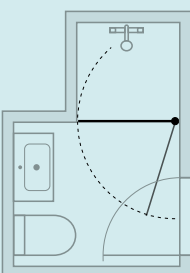
D71 + D71



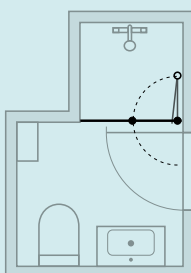
E81 + E81

## RECESS 90 CM

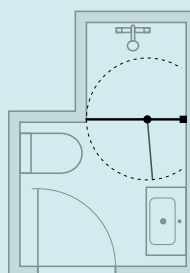
### 220 X 150 CM



A91



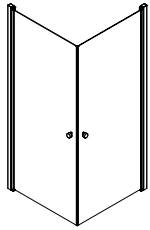
B91



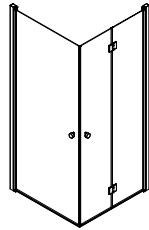
A91

## Combination options

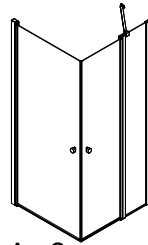
Working with the six base models, you can easily create lots of different shower solutions in various sizes. The base models are easy to combine and as they're reversible, you don't have to worry about right and left models. As an example, if you'd like an 80 cm square shower enclosure with two doors, you just order two "A81".



A + A



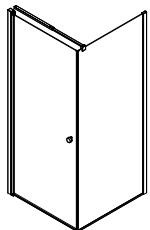
A + B



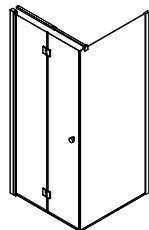
A + C



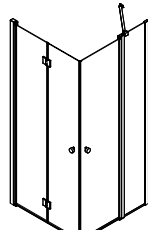
A + 1



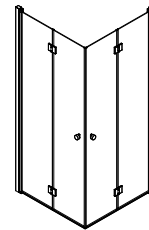
A + D + 4



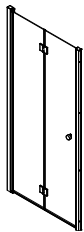
B + D + 4



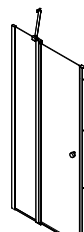
B + C



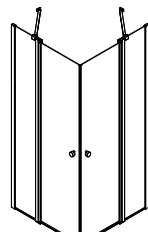
B + B



B + 1



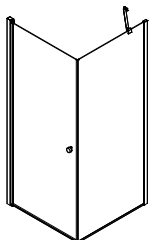
C + 1



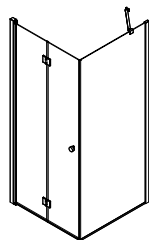
C + C



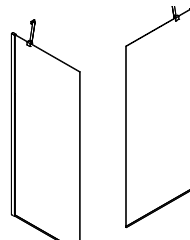
D + 2/3



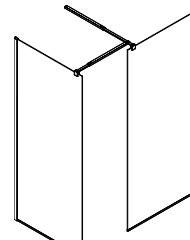
A + D + 2/3



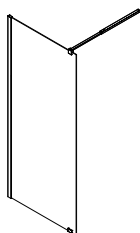
B + D + 2/3



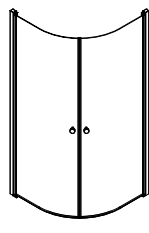
D + D + 2/3 (2 PCS.)



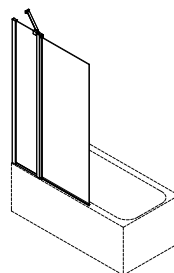
D + D + 4 (2 PCS.) + 5



D + 4



E + E

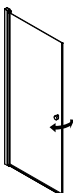




H




New!  
Profiles in black  
matt from  
1 Jan. 22.

# Price list Match shower




## MATCH BASE MODELS

		70 cm	80 cm	90 cm	100 cm				
<b>A - HINGED DOOR</b>									
	<b>Material/Profile colour</b>	<b>Art. no.</b>	<b>Price £</b>	<b>Art. no.</b>	<b>Price £</b>	<b>Art. no.</b>	<b>Price £</b>	<b>Art. no.</b>	<b>Price £</b>
	Clear glass/Satin	A71-01	390.-	A81-01	390.-	A91-01	390.-	A101-01	390.-
	Clear glass/Black matt	A71-03	390.-	A81-03	390.-	A91-03	390.-	A101-03	390.-
	Frosted glass/Satin	A71-02	471.-	A81-02	471.-	A91-02	471.-	-	-
	Height 200 cm								
	<b>CORNER SOLUTION</b>								
	Set, min/max adjustment:	69-71 cm, see page 34	79-81 cm, see page 34	89-91 cm, see page 34	99-101 cm, see page 34				
	<b>RECESS SOLUTION - SEE ACCESORIES</b>								
	Door, min/max adjustment:	67-69 cm	77-79 cm	87-89 cm	97-99 cm				
	Door with wall profile 8, min/max adjustment:	69,5-71,5 cm	79,5-81,5 cm	89,5-91,5 cm	99,5-101,5 cm				
	Door with wall profile 1, min/max adjustment:	71,5-75,5 cm	81,5-85,5 cm	91,5-95,5 cm	101,5-105,5 cm				

On request satin profile models are available in sizes that are 2 cm smaller

<b>B - BIFOLD HINGED DOOR (180°)</b>									
	<b>Material/Profile colour</b>	<b>Art. no.</b>	<b>Price £</b>	<b>Art. no.</b>	<b>Price £</b>	<b>Art. no.</b>	<b>Price £</b>	<b>Art. no.</b>	<b>Price £</b>
	Clear glass/Satin	B71-01	471.-	B81-01	471.-	B91-01	471.-	B101-01	471.-
	Clear glass/Black matt	B71-03	471.-	B81-03	471.-	B91-03	471.-	B101-03	471.-
	Frosted glass/Satin								
	Height 200 cm								
	<b>CORNER SOLUTION</b>								
	Set, min/max adjustment:	69-71 cm, see page 34	79-81 cm, see page 34	89-91 cm, see page 34	99-101 cm, see page 34				
	<b>RECESS SOLUTION - SEE ACCESORIES</b>								
	Door, min/max adjustment:	67-69 cm	77-79 cm	87-89 cm	97-99 cm				
	Door with wall profile 8, min/max adjustment:	69,5-71,5 cm	79,5-81,5 cm	89,5-91,5 cm	99,5-101,5 cm				
	Door with wall profile 1, min/max adjustment:	71,5-75,5 cm	81,5-85,5 cm	91,5-95,5 cm	101,5-105,5 cm				

On request satin profile models are available in sizes that are 2 cm smaller

<b>C - HINGED DOOR (180°) WITH IN-LINE PANEL AND WALL SUPPORT</b>									
	<b>Material/Profile colour</b>	<b>Art. no.</b>	<b>Price £</b>	<b>Art. no.</b>	<b>Price £</b>	<b>Art. no.</b>	<b>Price £</b>	<b>Art. no.</b>	<b>Price £</b>
	Clear glass/Satin	-	-	-	-	C91-01	390.-	C101-01	390.-
	Clear glass/Black matt								
	Frosted glass/Satin								
	Height 200 cm								
	<b>CORNER SOLUTION</b>								
	Set, min/max adjustment:					89-91 cm, see page 34		99-101 cm, see page 34	
	<b>RECESS SOLUTION - SEE ACCESORIES</b>								
	Door, min/max adjustment:					87-89 cm		97-99 cm	
	Door with wall profile 8, min/max adjustment:					89,5-91,5 cm		99,5-101,5 cm	
	Door with wall profile 1, min/max adjustment:					91,5-95,5 cm		101,5-105,5 cm	

On request satin profile models are available in sizes that are 2 cm smaller

## ACCESORIES

### WALL PROFILE FOR RECESS 1

	<b>Colour</b>	<b>Art. no.</b>	<b>Price £</b>	<b>Art. no.</b>	<b>Price £</b>	<b>Art. no.</b>	<b>Price £</b>	<b>Art. no.</b>	<b>Price £</b>
	Satin	1600501	160.-	1600501	160.-	1600501	160.-	1600501	160.-
	Black matt	1603501	160.-	1603501	160.-	1603501	160.-	1603501	160.-
	Incl magnetic seal, adjustable								

### WALL PROFILE FOR RECESS 8

	<b>Colour</b>	<b>Art. no.</b>	<b>Price £</b>	<b>Art. no.</b>	<b>Price £</b>	<b>Art. no.</b>	<b>Price £</b>	<b>Art. no.</b>	<b>Price £</b>
	Satin	1600535	81.-	1600535	81.-	1600535	81.-	1600535	81.-
	Black matt	1603535	81.-	1603535	81.-	1603535	81.-	1603535	81.-
	Incl magnetic seal, slim profile without adjustment								

General size guide – for exact sizes in mm for the different combinations see page 34-35

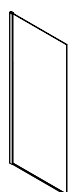


New!  
Profiles in black  
matt from  
1 Jan. 22.

## MATCH BASE MODELS







	70 cm	80 cm	90 cm
--	-------	-------	-------

### D - FIXED SHOWER PANEL WITH FLOOR PROFILE AND BRACKET




NB: Always add support

	Art. no.	Price £	Art. no.	Price £	Art. no.	Price £	
	Material/Profile colour						
	Clear glass/Satin	D71-01	390.-	D81-01	390.-	D91-01	390.-
	Clear glass/Black matt	D71-03	390.-	D81-03	390.-	D91-03	390.-
Frosted glass/Satin	D71-02	471.-	D81-02	471.-	D91-02	471.-	
Height 197,5 cm							
	Set, min/max adjustment:	69-71 cm	79-81 cm		89-91 cm		
	Door, min/max adjustment:	67-69 cm	77-79 cm		87-89 cm		
On request satin profile models are available in sizes that are 2 cm smaller							

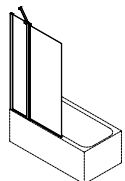

### ACCESORIES

	Colour	Art. no.	Price £	Art. no.	Price £	Art. no.	Price £
	2 Wall support 300 mm (fixed shower panel)						
	Satin	1600502	63.-	-	-	-	-
	Black matt	1603502	63.-	-	-	-	-
	3 Wall support 600 mm (fixed shower panel)						
	Satin	-	-	1600508	63.-	1600508	63.-
	Black matt	-	-	1603508	63.-	1603508	63.-
	4 Telescopic support rail 60-100 cm (fixed shower panel)						
	Satin	1600503	63.-	1600503	63.-	1600503	63.-
	Black matt	1603503	63.-	1603503	63.-	1603503	63.-
	5 Connector kit for model D+D+4 (2 pcs.)						
	Satin	1600504	17.-	1600504	17.-	1600504	17.-
	Black matt	1603504	17.-	1603504	17.-	1603504	17.-
	6 Support rail 120 cm for model D (fixed shower panel). Can be cut to suit if necessary						
	Satin	1600527	63.-	1600527	63.-	1600527	63.-
	Black matt	1603527	63.-	1603527	63.-	1603527	63.-
	7 Vertical ceiling support rail 100 cm for model D (fixed shower panel). Can be cut to suit if necessary						
	Satin	1600528	63.-	1600528	63.-	1600528	63.-
	Black matt	1603528	63.-	1603528	63.-	1603528	63.-

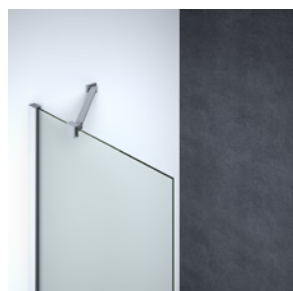
### E - QUADRANT HINGED DOOR (180°)

	Material/Profile colour	Art. no.	Price £	Art. no.	Price £	Art. no.	Price £
	Clear glass/Satin	-	-	E81-01	390.-	E91-01	390.-
	Clear glass/Black matt	-	-	-	-	E91-03	390.-
	Frosted glass/Satin	-	-	-	-	E91-02	471.-
Height 200 cm							
	CORNER SOLUTION			79-81 cm, see page 34		89-91 cm, see page 34	
	ENCLOSURE			62-64 cm		72-74 cm	
On request satin profile models are available in sizes that are 2 cm smaller							

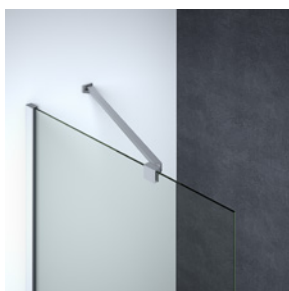
### H - BATH PANEL WITH HINGED DOOR

	Material/Profile colour	Art. no.	Price £	Art. no.	Price £	Art. no.	Price £
	Clear glass/Satin	-	-	-	-	-	-
	Height 155 cm						
	Set, min/max adjustment:						

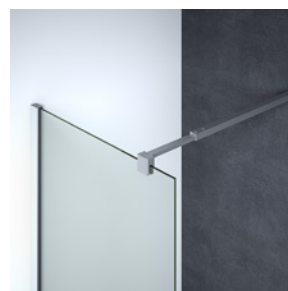
General size guide – for exact sizes in mm for the different combinations see page 34-35



2 - Wall support 300



3 - Wall support 600



4 - Telescopic support rail

100 cm	120 cm	140 cm
--------	--------	--------

<u>Art. no.</u>	<u>Price £</u>
D101-01	390.-
D101-03	390.-
D101-02	471.-

99-101 cm

97-99 cm

<u>Art. no.</u>	<u>Price £</u>
-	-
-	-

1600508	63.-
1603508	63.-

1600503	63.-
1603503	63.-

1600504	17.-
1603504	17.-

1600527	63.-
1603527	63.-

1600528	63.-
1603528	63.-

<u>Art. no.</u>	<u>Price £</u>
D121-01	549.-
-	-
-	-

119-121 cm

117-119 cm

<u>Art. no.</u>	<u>Price £</u>
-	-
-	-

1600508	63.-
1603508	63.-

1600503	63.-
1603503	63.-

1600504	17.-
1603504	17.-

1600527	63.-
1603527	63.-

1600528	63.-
1603528	63.-

<u>Art. no.</u>	<u>Price £</u>
D141-01	549.-
-	-
-	-

139-141 cm

137-139 cm

<u>Art. no.</u>	<u>Price £</u>
-	-
-	-

1600508	63.-
1603508	63.-

1600503	63.-
1603503	63.-

1600504	17.-
1603504	17.-

1600527	63.-
1603527	63.-

1600528	63.-
1603528	63.-

<u>Art. no.</u>	<u>Price £</u>
E101-01	390.-
-	-
-	-

99-101 cm, see page 34

82-84 cm

<u>Art. no.</u>	<u>Price £</u>
-	-
-	-
-	-

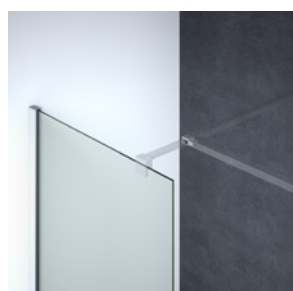
<u>Art. no.</u>	<u>Price £</u>
-	-
-	-
-	-

<u>Art. no.</u>	<u>Price £</u>
H100-01	390.-

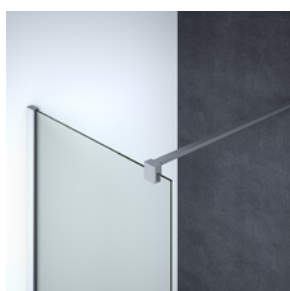
95-97 cm, see page 34

<u>Art. no.</u>	<u>Price £</u>
-	-

<u>Art. no.</u>	<u>Price £</u>
-	-



5 - Connector kit 2 pcs.



6 - Support rail (cut to size)



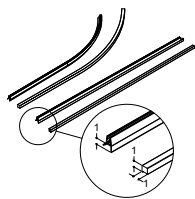
7 - Ceiling support

New!  
Profiles in black  
matt from  
1 Jan. 22.

## ACCESORIES

### FLOOR PROFILE SET

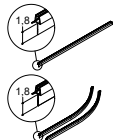
Provides a power shower proof solution (CE-certified)



Description	Doors	Colour	Art. no.	Price £
For square enclosures A, B, C	2 doors	Satin	1600550	63.-
For square enclosures A, B, C	2 doors	Black matt	1603550	63.-
For recess applications 1+A/B/C	1 door	Satin	1600551	63.-
For recess applications 1+A/B/C	1 door	Black matt	1603551	63.-
For fixed shower panels D+A/B/C	1 door	Satin	1600552	63.-
For fixed shower panels D+A/B/C	1 door	Black matt	1603552	63.-
For quadrant enclosure E	2 doors	Satin	1600553	63.-
For quadrant enclosure E	2 doors	Black matt	1603553	63.-

Cut to suit the relevant enclosure on site. Can also be retro fitted.

### PVC SEAL, STANDARD (18MM)

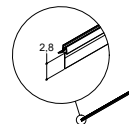


Description	Colour	Art. no.	Price £
For straight doors (1 pcs.)	Satin	1600565	21.-
For straight doors (1 pcs.)	Black matt	1603565	21.-
For curved doors model E (2 pcs.)	Satin	1600566	42.-
For curved doors model E (2 pcs.)	Black matt	1603566	42.-

Cut to suit the relevant enclosure on site

### PVC SEAL, TALL (28 MM)

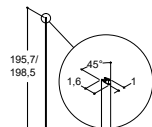
For use on floors with large fall towards the drain



Description	Colour	Art. no.	Price £
For straight doors (2 pcs. set)	Satin	1600560	42.-
For straight doors (2 pcs. set)	Black matt	1603560	42.-
For quadrant doors (2 pcs. set)	Satin	1600561	42.-
For quadrant doors (2 pcs. set)	Black matt	1603561	42.-
For recess doors (1 pcs.)	Satin	1600562	21.-
For recess doors (1 pcs.)	Black matt	1603562	21.-

Cut to suit the relevant enclosure on site

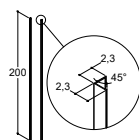
### MAGNETIC SEAL



Description	Colour	Art. no.	Price £
For A/B/C/E (1 pcs.)	Satin	1600606	21.-
For A/B/C/E (1 pcs.)	Black matt	1603606	21.-
For D fixed shower panel (1 pcs.)	Satin	1600622	21.-
For D fixed shower panel (1 pcs.)	Black matt	1603622	21.-

### PROFILE 45 DEGREE FOR RECESS SOLUTION

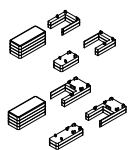
For use with neo angle installations



Description	Colour	Art. no.	Price £
Profile (2 pcs.)	Satin	1600506	102.-
Profile (2 pcs.)	Black matt	1603506	102.-

Increases the size by 33 mm on both sides.

### SPACER KITS

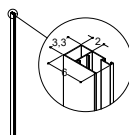


Description	Colour	Art. no.	Price £
2 x 6 mm door-door and door-fixed shower panel	Chrome	1600628	42.-
2 x 6 mm door-door and door-fixed shower panel	Black matt	1603628	42.-
2 x 6 mm door-door and door-fixed shower panel kit for shower extension profile	Chrome	1600629	42.-
2 x 6 mm door-door and door-fixed shower panel kit for shower extension profile	Black matt	1603629	42.-

Spacer kits for adjustment of uneven floors

### SHOWER EXTENSION PROFILE FOR A, B, E AND WALL PROFILE 1

Exposed pipework can also pass through

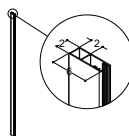


Description	Colour	Art. no.	Price £
200 cm for A, B and E	Satin	1600507	102.-
200 cm for A, B and E	Black matt	1603507	102.-
197,5 cm for 1	Satin	1600534	102.-
197,5 cm for 1	Black matt	1603534	102.-

Can be combined with all types of doors and fixed shower panel and increases the overall size by 20 mm. It is possible to drill a 20-40mm hole for pipework.

### SHOWER EXTENSION PROFILE FOR C AND D

Exposed pipework can also pass through



Description	Colour	Art. no.	Price £
199,5 cm for C	Satin	1600525	102.-
197,5 cm for D	Satin	1600526	102.-
197,5 cm for D	Black matt	1603526	102.-

Can be combined with all types of doors and fixed shower panel and increases the overall size by 20 mm. It is possible to drill a 20-40mm hole for pipework.

# Complete your experience

Exclusive accessory collection which makes everyday life with Dansani Match an even greater pleasure. Everything is designed to the smallest detail for optimal functionality.



## Squeegee in silicone

Contemporary shower squeegee in a dark grey silicone. The slightly textured surface enables a firm grip. The squeegee comes with a practical hook that hangs on the edge of the glass.

Art. no.: 1600162

**31.-**



## Minimalist squeegee

Elegant chrome squeegee. The stringent and simple design is adapted to Match. The squeegee can hang directly on the edge of the glass using the included silicone hook.

Art. no.: 1600012

**31.-**

Replacement rubber

Art. no.: 1600017

**9.-**



## Ergonomic squeegee

No more water drops that turn into unsightly limescale deposits. Smart shower squeegee which fits well into the hand and hangs elegantly in the accompanying bracket.

Art. no.: 2400346

**31.-**

Replacement rubber

Art. no.: 2400500

**9.-**



## Shower Corner

Smart stainless steel shelf. The shelf is built into the corner of the shower cubicle without the use of screws, but can also be retro fitted in an existing shower enclosure.

Art. no.: 2400600

**63.-**



## Towel hook in silicone

Set with two double hooks. The hooks can hang on the edge of the glass, on the inside or outside, and are practical for towels, brushes, sponges etc.

Available in light or dark grey.

Light grey, Art. no.: 1600013

**11.-**

Dark grey, Art. no.: 1600163

**11.-**

## Match - Product information

### Match hinged and fixed shower panels

All Match hinged doors and fixed shower panels have been tested to comply with EN 14428:2015 referring to toughening of glass, stability and water tightness classification.

#### GLASS

6 mm hardened safety glass complying with EN12150 with EasyCare treatment on the side facing inwards. Clear glass and some models in frosted glass.

#### PROFILES

Strong aluminium alloy with hard-wearing satin-anodised or black matt powder-coated surface.

#### HINGES

Rise and fall hinges that opens both inwards and outwards by 180 degrees. The door is held open at 90 degrees either way. Inside the hinge a waterproof seal has been added.

#### MAGNETIC PROFILES

One removable magnetic profile is supplied with every door and fixed shower panel, that can be combined with profiles across the range. Once the magnet has been activated twice the polarity is set so the two magnetic seals work together. The magnet is located inside a PVC profile, with a matt surface to ensure they do not stick together during prolonged times of little or no use.

#### FIXED SHOWER PANEL

The glass panel can be adjusted by 20 mm at the wall profile, and is locked in place with PVC profiles inside the alu profile. The floor profile can be adjusted up to 6 mm horizontally and using the spacers provided to suit, 12 mm vertically. Alternatively, a 12 mm adjustable floor bracket can be used for wet room solutions where no seals are required.

#### DOORS

On models A, B and E the hinge can be adjusted by 20 mm at the wall profile for off-square applications. On fixed shower panel models C and D the glass panel is adjusted within the wall profile as for fixed shower panels. The floor profile can be adjusted up to 6 mm horizontally using the predrilled slot.

#### HANDLES

A chrome-plated ABS knob handle is included with all doors.

#### FITTINGS

Floor brackets and fittings for telescopic support rail and wall support in chrome-plated zinc-aluminium or black matt powder coated. End caps for profiles and various fittings in chrome-plated or black matt ABS.

#### TELESCOPIC SUPPORT RAIL

Strong alloy rail with hardwearing, satin-anodised chrome-plated or black matt powder-coated surface with concealed wall fixing bracket. The support rail also has concealed fixing to the profile and is adjustable from 60 to 100 cm.

#### WALL SUPPORT

Strong alloy wall support with hardwearing, satin-anodised chrome-plated or black matt powder-coated surface with fittings in chrome-plated zinc aluminium.

#### SEAL

Transparent or black matt PVC seal used with doors at floor level can easily be replaced if required over time. Taller seals can also be purchased separately if required for certain applications.

#### LEAD-TIME

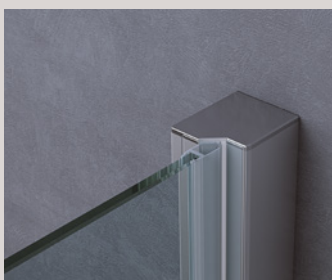
All Match models are in stock for fast supply with 1 door/panel in 1 box. All boxes can be handled by one person as they are below 30 kg. Accessories like support rails and alternative handles are packed separately.

#### WARRANTY

Dansani offers 10 years warranty against manufacturing defects on all Match models.

Exclusive, very strong and durable shower trays are available as optional extras for certain models. For more detail please refer to [www.dansani.co.uk](http://www.dansani.co.uk)





#### MODEL 1 – WALL PROFILE FOR RECESS FOR DOOR A, B AND C

Wall profile for recess 1 can be combined with door A, B and C. In this way there is adjustability on both sides with an overall adjustment possible of 40 mm.

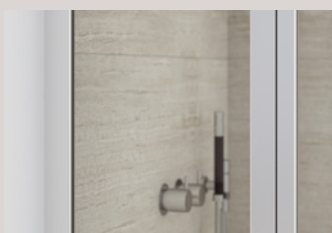
The angled magnetic catch ensures perfect closure every time. The profile can be fitted in both left and right-hand applications, without the need for tools.

#### MODEL 8 – WALL PROFILE FOR RECESS FOR DOOR A, B AND C

Wall profile for recess 8 can be combined with door A, B and C. To be used where less adjustment is required for a neater look. Please note that using this profile means there is adjustment of only 20mm on the hinged door.

#### MODEL A AND E – HINGED DOOR

The large door provides easy access, while at the same time can be folded inwards freeing valuable floor space. With the slim profiles and the large areas of glass this makes for the neatest option. Universal model that can fitted both left and right without the need for tools or on-site modification. Additional floor profile can be purchased for optimal water proofing and enables CE approval in accordance with EN 14428:2015.



#### THE SQUARE PROFILE

The slim and square profiles with softly curved corners give an elegant yet contemporary appearance. The glass as well as being held in place with silicone inside the profile also has a hidden hook that secures the glass both top and bottom.



#### FLOOR PROFILE

Additional floor profile can be purchased and is placed on the outside of the enclosure door for optimum water proofing and enables CE approval in accordance with EN 14428:2015. This profile can easily be retro fitted as well.

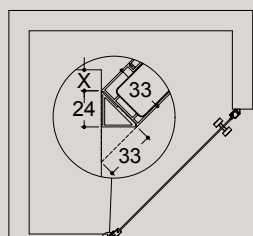
#### MODEL B – BIFOLD DOOR

Very practical model, that takes up minimum space when not in use. Folds inwards, thereby keeping the water droplets inside the wet area only. Can be fitted in both left and right hand situations without the need for modifications or tools.

#### MODEL C AND H – HINGED DOOR WITH IN-LINE PANEL

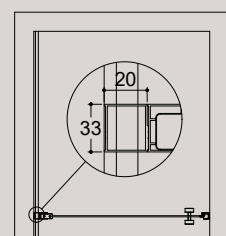
A hinged door combined with an in-line panel provides a solution where you can furnish up close to the shower enclosure without this interfering with the doors movement. The wall support attached to the fixed shower panel provides a stable and secure result.

X = MAX 25 mm



#### PROFILE 45 DEGREE

This profile 45 degree is used in neo angled recessed applications. Please note this will increase the overall width by 33 mm on each side.



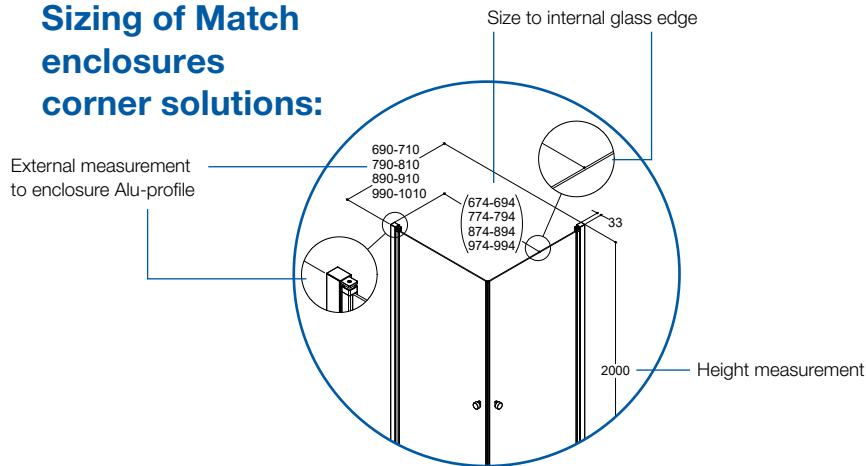
#### ADDITIONAL WALL PROFILE FOR EXPOSED WATER SUPPLY

This profile is used in connection with an exposed water supply running on the outside of the wall. Can be combined with all variants of shower doors and fixed shower panels. The additional wall profile will make further adjustment between 20-40 mm depending on how straight the walls are.

#### MODEL D – FIXED SHOWER PANEL

This model is reversible and is easily adjusted using the telescopic support rail that can be cut to suit, when installed on its own. The fixed shower panel can also be installed with models A, B and C.

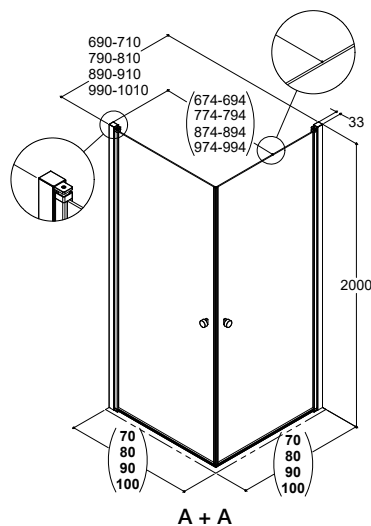
## Sizing of Match enclosures corner solutions:



## Corner solutions

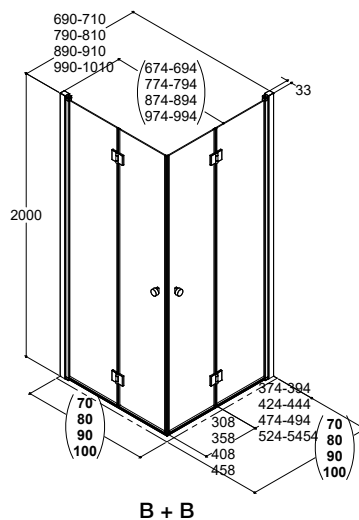
### Model A

- hinged door



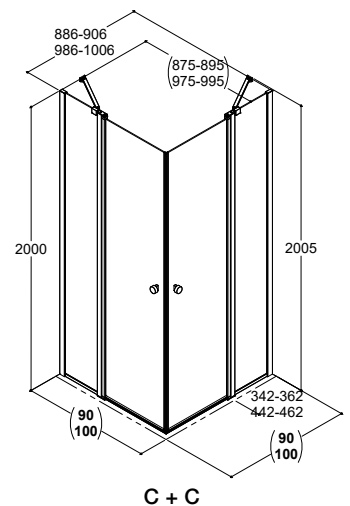
### Model B

- bifold door



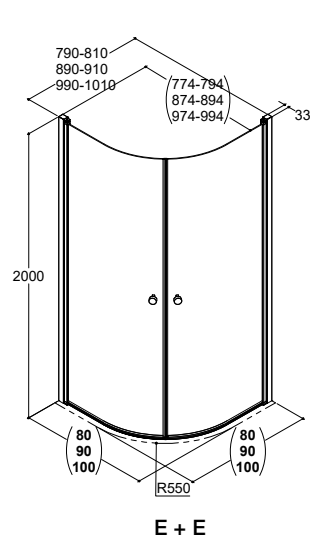
### Model C

- hinged door



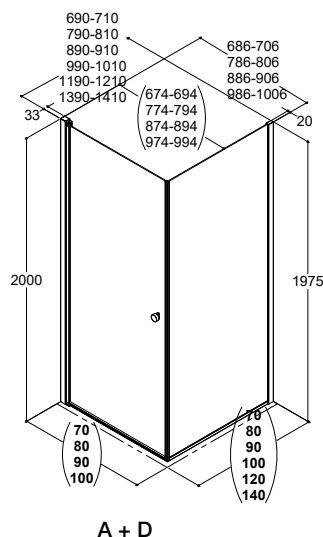
### Model E

- hinged door



### Model A and D

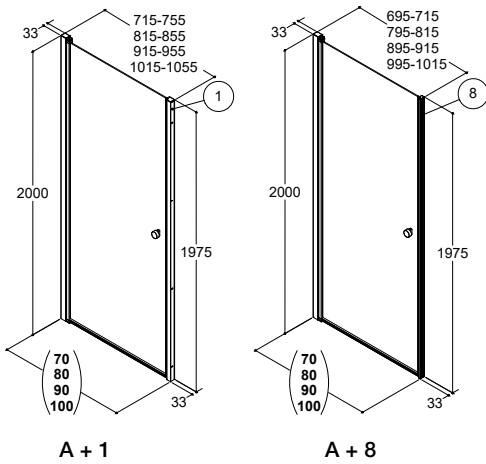
- 90° hinged door with fixed shower panel



## Recess solutions

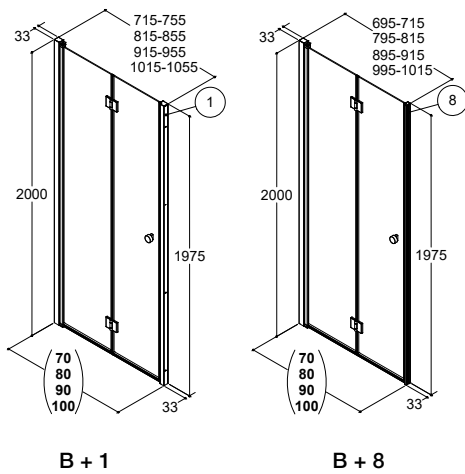
### Model A

- hinged door



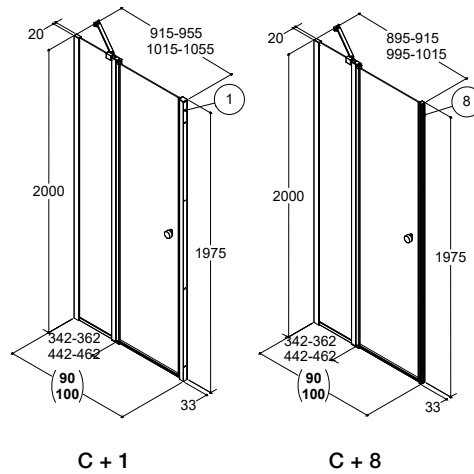
### Model B

- bifold door



### Model C

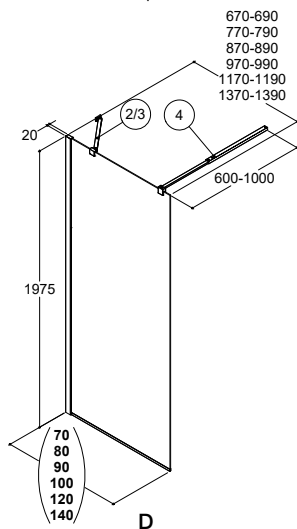
- hinged door with in-line panel



## Fixed shower panels

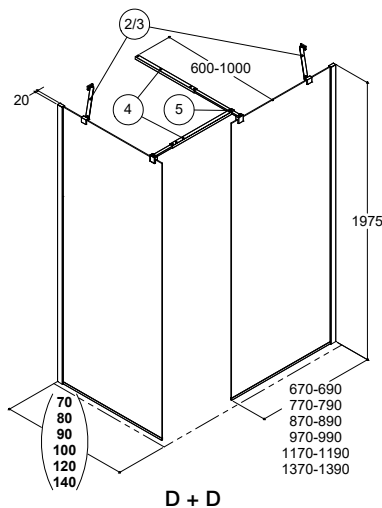
### Model D

- fixed shower panel



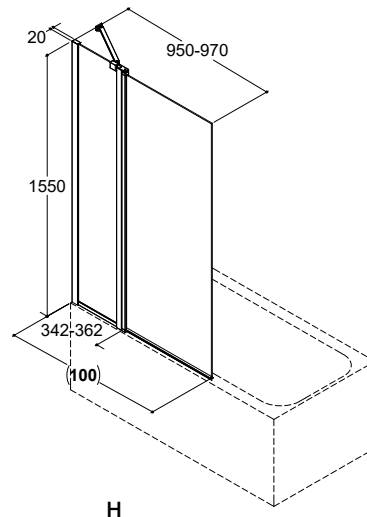
### Model D

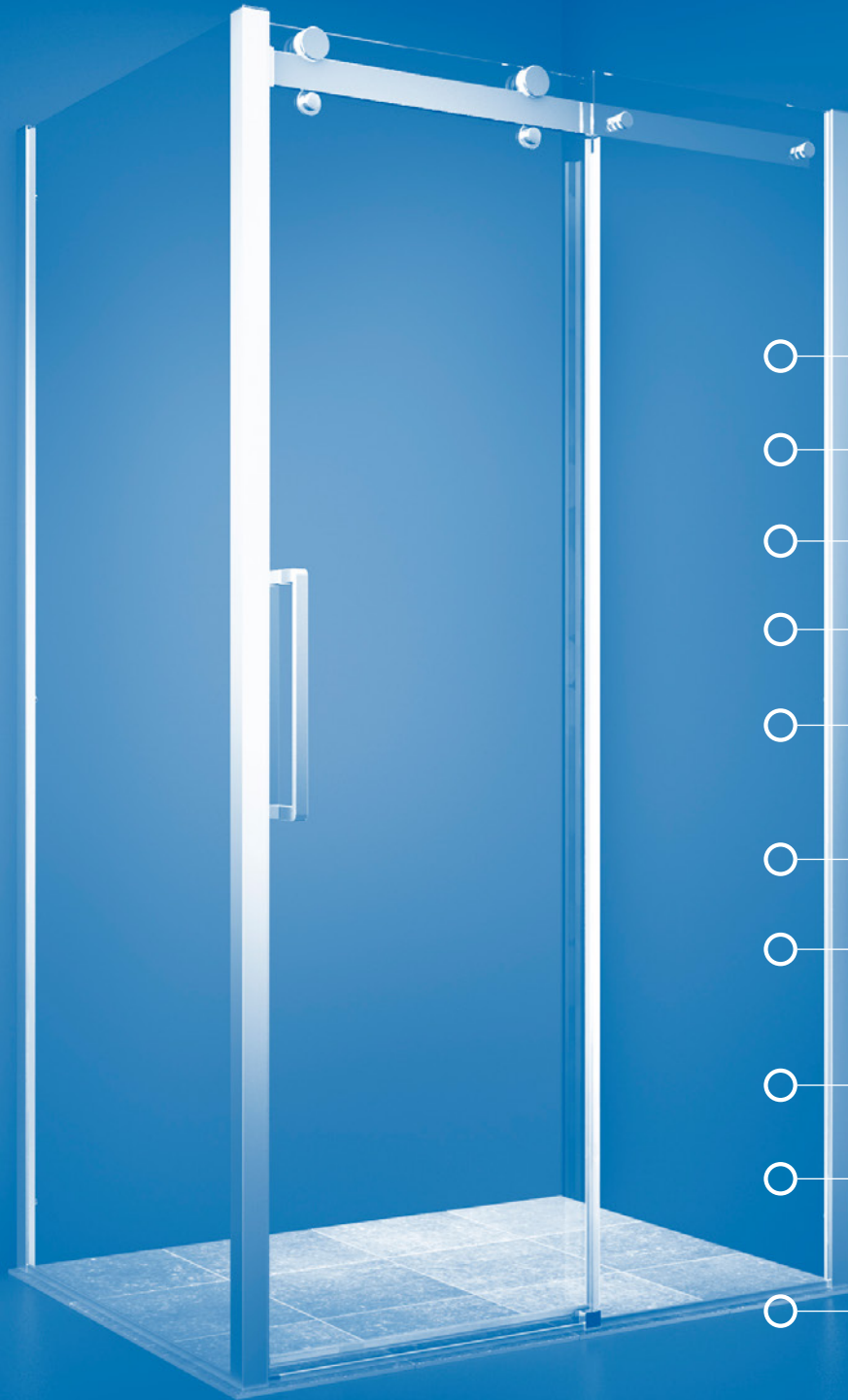
- fixed shower panel



### Model H

- bath panel with hinged door





# Dansani XXL shower

Large, user-friendly sliding door solution with a functional design

---

Choose between the models Classic and Deluxe

---

8 mm safety glass

---

Height 200 cm

---

Sliding doors in extra large widths 120, 140 and 160 cm

---

Sliding door which can be combined with one or two fixed shower panels – as corner solution or freestanding shower enclosure

---

Shower door handle in stainless steel

---

All models are reversible so that you can use them both on the right and the left side without having to adjust them or use tools

---

Easy to install with two people

---

Easy cleaning and maintenance through the EasyCare treatment on the inside

---

10 years warranty on manufacturing faults

Classic  
design and  
robust  
quality

**140 cm Classic - Clear glass**  
Sliding door 887.- Art. no. CL1400-0001

## Model Classic

Classic offers robust quality at a competitive price. This model is perfect for you if you'd like a classic design with a discreet and simple look. The solid runners on the sliding door run inside the profile rail so aren't visible from the outside of the door. A classic and simple solution.



01 Classic runners - exterior

02 Classic runners - view from inside enclosure

03 The door clicks out at the bottom for easier cleaning

04 Classic SoftStop function

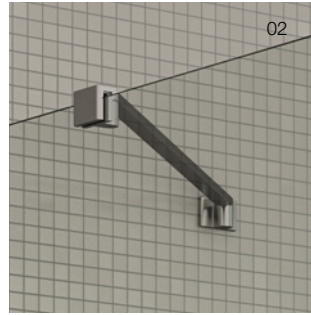
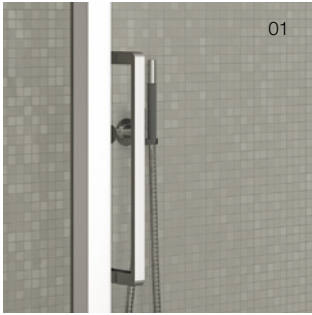
**120 x 90 cm Classic - Clear glass**

Sliding door/fixed shower panel 1,218.- Art. no. CL1201-0900 /

Shower tray 465.- Art. no. 1610320







- 01 Shower door handle in stainless steel come with all models
- 02 For the freestanding shower solution with two fixed shower panels, two support rails are supplied



**160 x 100 cm Classic - Clear glass**  
Sliding door/2 fixed shower panels 2,003.- Art. no. CL1602-1000

## Model Deluxe

Deluxe offers a particularly stable and silent solution with an elegant design. The sliding door features two runners placed in a rail above and beneath the profile to ensure a soft and smooth movement. The door is stopped smoothly by the elegant softstop function. Enjoy the feeling of pure luxury and quality.



01 Deluxe runner - interior

02 Deluxe runner - exterior

03 Standard stainless steel handles are supplied with all models

04 Deluxe SoftStop function

Silent and comfortable with an elegant design



120 cm Deluxe - Clear glass  
Sliding door 910.- Art. no. DL1200-0001





**160 x 90 cm Deluxe - Clear glass**

Sliding door/fixed shower panel 1,528.- Art. no. DL1601-0900



01 The doors can be easily clicked out at the bottom for easier cleaning

02 For the freestanding shower solution with two fixed shower panels, two support rails are supplied



**140 x 80 cm Deluxe - Clear glass**

Sliding door/2 fixed shower panels 2,003.- Art. no. DL1402-0800 /  
Shower tray 465.- Art. no. 1610310

# Price list XXL shower

## CLASSIC

### CLASSIC SLIDING DOOR

Reversible



Dimension
Min/max adjustment

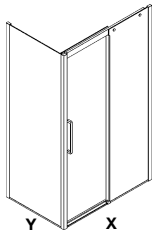
120 cm	
Art. no.	Price £
CL1200-0001	829.-
X: 116,5 - 119 cm	

140 cm	
Art. no.	Price £
CL1400-0001	887.-
X: 136,5 - 139 cm	

160 cm	
Art. no.	Price £
CL1600-0001	1,011.-
X: 156,5 - 159 cm	

### CLASSIC SLIDING DOOR WITH 1 FIXED SHOWER PANEL

Reversible



Dimension
80 cm
Min/max adjustment
Incl. 45 cm support rail
90 cm
Min/max adjustment
Incl. 45 cm support rail
100 cm
Min/max adjustment
Incl. 60 cm support rail

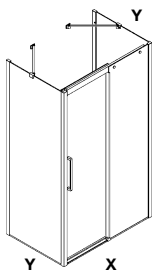
120 cm	
Art. no.	Price £
CL1201-0800	1,218.-
X: 116,5 - 119 cm x Y: 76,5 - 79 cm	
CL1201-0900	1,218.-
X: 116,5 - 119 cm x Y: 86,5 - 89 cm	
CL1201-1000	1,218.-
X: 116,5 - 119 cm x Y: 96,5 - 99 cm	

140 cm	
Art. no.	Price £
CL1401-0800	1,274.-
X: 136,5 - 139 cm x Y: 76,5 - 79 cm	
CL1401-0900	1,274.-
X: 136,5 - 139 cm x Y: 86,5 - 89 cm	
CL1401-1000	1,274.-
X: 136,5 - 139 cm x Y: 96,5 - 99 cm	

160 cm	
Art. no.	Price £
CL1601-0800	1,401.-
X: 156,5 - 159 cm x Y: 76,5 - 79 cm	
CL1601-0900	1,401.-
X: 156,5 - 159 cm x Y: 86,5 - 89 cm	
CL1601-1000	1,401.-
X: 156,5 - 159 cm x Y: 96,5 - 99 cm	

### CLASSIC SLIDING DOOR WITH 2 FIXED SHOWER PANELS

Reversible



Dimension
80 cm
Min/max adjustment
Incl. 2 pcs. 45 cm support rails
90 cm
Min/max adjustment
Incl. 2 pcs. 45 cm support rails
100 cm
Min/max adjustment
Incl. 2 pcs. 60 cm support rails

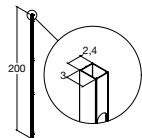
120 cm	
Art. no.	Price £
CL1202-0800	1,820.-
X: 116,5 - 119 cm x Y: 76,5 - 79 cm	
CL1202-0900	1,820.-
X: 116,5 - 119 cm x Y: 86,5 - 89 cm	
CL1202-1000	1,820.-
X: 116,5 - 119 cm x Y: 96,5 - 99 cm	

140 cm	
Art. no.	Price £
CL1402-0800	1,878.-
X: 136,5 - 139 cm x Y: 76,5 - 79 cm	
CL1402-0900	1,878.-
X: 136,5 - 139 cm x Y: 86,5 - 89 cm	
CL1402-1000	1,878.-
X: 136,5 - 139 cm x Y: 96,5 - 99 cm	

160 cm	
Art. no.	Price £
CL1602-0800	2,003.-
X: 156,5 - 159 cm x Y: 76,5 - 79 cm	
CL1602-0900	2,003.-
X: 156,5 - 159 cm x Y: 86,5 - 89 cm	
CL1602-1000	2,003.-
X: 156,5 - 159 cm x Y: 96,5 - 99 cm	

## ADD-ON

### SHOWER EXTENSION PROFILE



Increases the installation size by 30 mm

Art. no.	Price £
1600700	70.-

Art. no.	Price £
1600700	70.-

Art. no.	Price £
1600700	70.-

## DELUXE

### DELUXE SLIDING DOOR

Reversible



#### Dimension

Min/max adjustment

120 cm

Art. no.	Price £
DL1200-0001	910.-
X: 116,5 - 119 cm	

140 cm

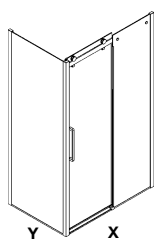
Art. no.	Price £
DL1400-0001	1,011.-
X: 136,5 - 139 cm	

160 cm

Art. no.	Price £
DL1600-0001	1,139.-
X: 156,5 - 159 cm	

### DELUXE SLIDING DOOR WITH 1 FIXED SHOWER PANEL

Reversible



#### Dimension

80 cm

Min/max adjustment

Incl. 45 cm support rail

90 cm

Min/max adjustment

Incl. 45 cm support rail

100 cm

Min/max adjustment

Incl. 60 cm support rail

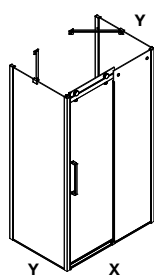
Art. no.	Price £
DL1201-0800	1,300.-
X: 116,5 - 119 cm x Y: 76,5 - 79 cm	
DL1201-0900	1,300.-
X: 116,5 - 119 cm x Y: 86,5 - 89 cm	
DL1201-1000	1,300.-
X: 116,5 - 119 cm x Y: 96,5 - 99 cm	

Art. no.	Price £
DL1401-0800	1,401.-
X: 136,5 - 139 cm x Y: 76,5 - 79 cm	
DL1401-0900	1,401.-
X: 136,5 - 139 cm x Y: 86,5 - 89 cm	
DL1401-1000	1,401.-
X: 136,5 - 139 cm x Y: 96,5 - 99 cm	

Art. no.	Price £
DL1601-0800	1,528.-
X: 156,5 - 159 cm x Y: 76,5 - 79 cm	
DL1601-0900	1,528.-
X: 156,5 - 159 cm x Y: 86,5 - 89 cm	
DL1601-1000	1,528.-
X: 156,5 - 159 cm x Y: 96,5 - 99 cm	

### DELUXE SLIDING DOOR WITH 2 FIXED SHOWER PANELS

Reversible



#### Dimension

80 cm

Min/max adjustment

Incl. 2 pcs. 45 cm support rails

90 cm

Min/max adjustment

Incl. 2 pcs. 45 cm support rails

100 cm

Min/max adjustment

Incl. 2 pcs. 60 cm support rails

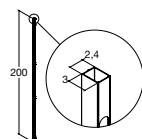
Art. no.	Price £
DL1202-0800	1,901.-
X: 116,5 - 119 cm x Y: 76,5 - 79 cm	
DL1202-0900	1,901.-
X: 116,5 - 119 cm x Y: 86,5 - 89 cm	
DL1202-1000	1,901.-
X: 116,5 - 119 cm x Y: 96,5 - 99 cm	

Art. no.	Price £
DL1402-0800	2,003.-
X: 136,5 - 139 cm x Y: 76,5 - 79 cm	
DL1402-0900	2,003.-
X: 136,5 - 139 cm x Y: 86,5 - 89 cm	
DL1402-1000	2,003.-
X: 136,5 - 139 cm x Y: 96,5 - 99 cm	

Art. no.	Price £
DL1602-0800	2,130.-
X: 156,5 - 159 cm x Y: 76,5 - 79 cm	
DL1602-0900	2,130.-
X: 156,5 - 159 cm x Y: 86,5 - 89 cm	
DL1602-1000	2,130.-
X: 156,5 - 159 cm x Y: 96,5 - 99 cm	

## ADD-ON

### SHOWER EXTENSION PROFILE



Increases the installation size by 30 mm

Art. no.	Price £
1600700	70.-

Art. no.	Price £
1600700	70.-

Art. no.	Price £
1600700	70.-

## XXL dimensions and product information

### Model Classic and Deluxe

All Dansani sliding doors and fixed shower panels have been tested and comply with regulations EN 14428:2015 this concerns the toughening of glass, stability and water proofing classification.

All models are reversible and can be used in both left and right hand applications without the need for tools or modifications

#### GLASS

8 mm safety glass according to EN12150 regulations with internal easy care treatment. Available in clear glass.

#### PROFILES

Strong aluminum profile in satin anodized finish. Wall profiles are adjustable.

#### HANDLES

Shower door handle in stainless steel.

#### FITTINGS

Wall bracket and brackets for wall support are in chromed zinc-aluminum. Cover caps in chromed ABS.

#### INSTALLATION

Perfect installation even on out of true walls due to the adjustment possibilities.

#### CLASSIC MODEL - RUNNERS

Brass with polished chrome finish. The runners are not visible from the outside.

#### DELUXE MODEL - RUNNERS

The runners are produced in zinc alloy. The fittings for the top bar are made in brass with a refined polished chrome finish.

#### SUPPORT RAIL

Polished stainless steel with cover caps in chromed ABS. For enclosures with 2 fixed shower panels, 2 wall supports are supplied as standard.

#### SPARE PARTS

For spare parts please get in touch with your Dansani retailer.

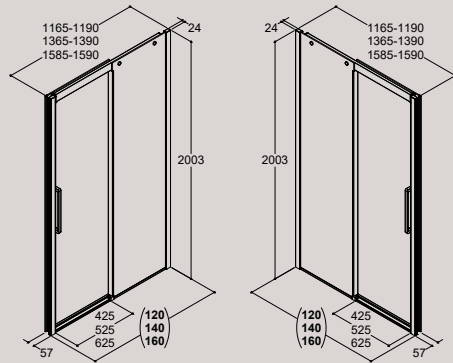
#### WARRANTY

Dansani offers a 10 year warranty against manufacturing defects on all models.



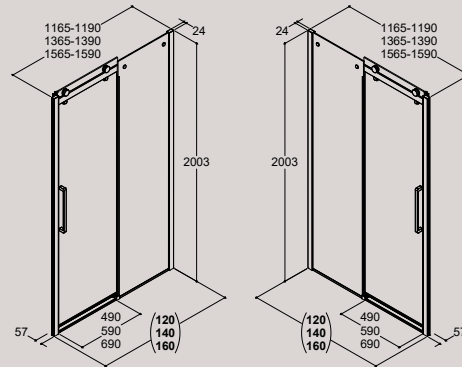
### Classic

Sliding door (reversible)



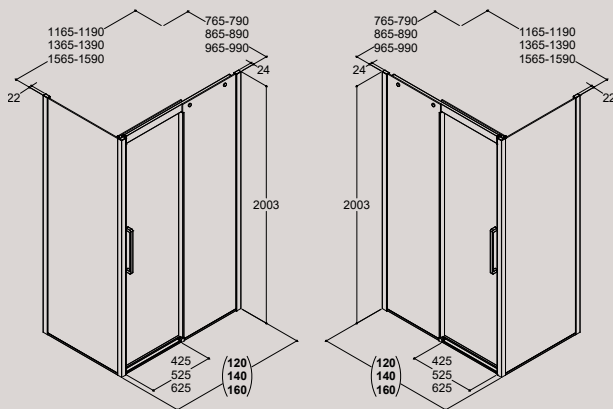
### Deluxe

Sliding door (reversible)



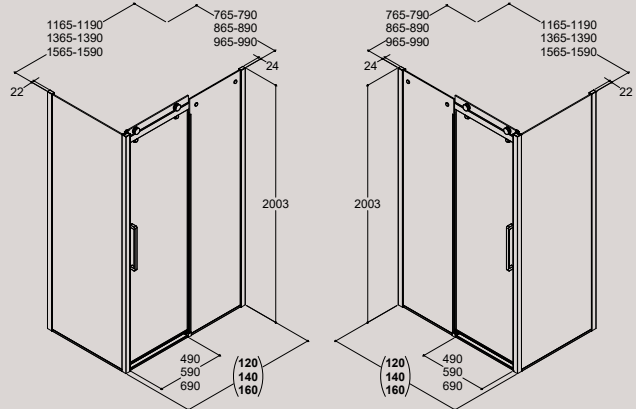
### Classic

Sliding door with 1 fixed shower panel (reversible)



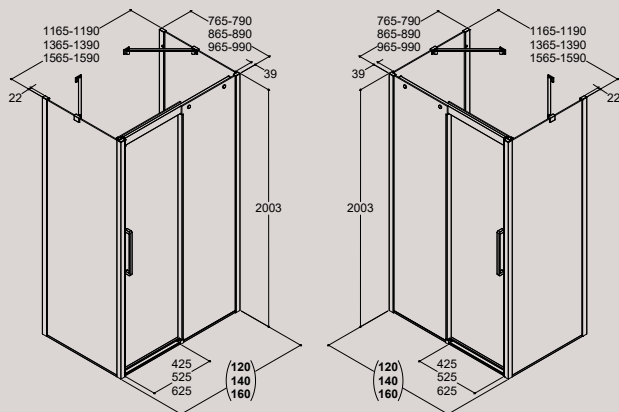
### Deluxe

Sliding door with 1 fixed shower panel (reversible)



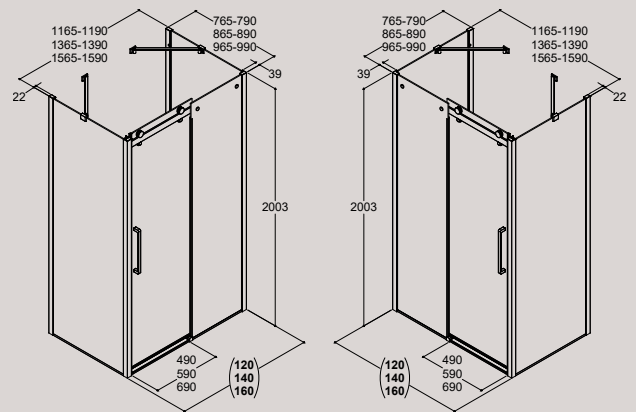
### Classic

Sliding door with 2 fixed shower panels (reversible)



### Deluxe

Sliding door with 2 fixed shower panels (reversible)



# Shower trays

## PLAIN AND THIN SHOWER TRAY WITH A HEIGHT OF ONLY 35 MM

Dansani shower trays are manufactured from a fibre-reinforced composite material, which is subjected to a pressure of 2,000 tons and temperatures of up to 190 degrees during production. This process ensures a very uniform, strong and stable construction, which is very light in comparison with other solutions.

Height adjustable legs come with all shower bases with fronts.

The waste pipe is horizontal, DN50, 90 mm with a waste capacity of 30 l/min. and a height of 86 mm.



## Installation options

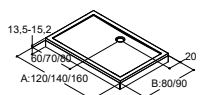


If you want the shower tray to be raised above the floor to allow the drain, for example, to be run back across the floor, Dansani offers a kit to facilitate this type of installation. The kit comprises a number of adjustable feet, which are easily "clicked" on to the base and ensure stable fitting, even on uneven floors. In addition, the kit comprises a front panel in a fibre-reinforced material, height 100 mm, which is fitted with small clips and makes it easy to remove the front when cleaning or checking the installation.

If you want the shower tray to be placed on the floor, more stringent requirements are made to the drain, sealing in the floor and flooring.

## SHOWER BASES

### SQUARE



#### Dimension

#### WITHOUT FRONT

80 cm
90 cm

#### WITH FRONT

80 cm
90 cm

### 120 cm

Art. no.	Price £
1610300	465.-
1610320	465.-
1611300	664.-
1611320	664.-

### 140 cm

Art. no.	Price £
1610310	465.-
1610330	465.-
1611310	664.-
1611330	664.-

### 160 cm

Art. no.	Price £
-	-
1610340	465.-
-	-
1611340	664.-

Height adjustable without front: From 130 mm - 152 mm

Total height with front: 135 mm.

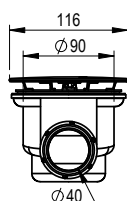
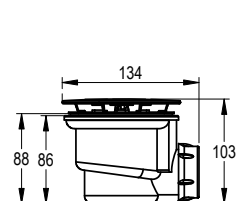
Height of front: 100 mm.

Inside depth: 5 mm - 20 mm

## WASTEKIT FOR SHOWER TRAY



Colour	Dimension	Description	Art. no.	Price £
Chrome	Ø90 mm	For 40 mm waste incl. adapter for 43 cm	1600004	39.-
Chrome	Ø90 mm	For 40 mm waste incl. adapter for 50 cm	1600023	39.-



# Complete your experience

Exclusive accessory collection which makes everyday life with Dansani XXL an even greater pleasure. Everything is designed to the smallest detail for optimal functionality



## Squeegee in silicone

Contemporary shower squeegee in a dark grey silicone. The slightly textured surface enables a firm grip. The squeegee comes with a practical hook that hangs on the edge of the glass.

Art. no.: 1600162

**31.-**



## Minimalist squeegee

Elegant chrome squeegee. The stringent and simple design is adapted to XXL. The squeegee can hang directly on the edge of the glass using the included silicone hook.

Art. no.: 1600012

**31.-**

Replacement rubber

Art. no.: 1600017

**9.-**



## Ergonomic squeegee

No more water drops that turn into unsightly limescale deposits. Smart shower squeegee which fits well into the hand and hangs elegantly in the accompanying bracket.

Art. no.: 2400346

**31.-**

Replacement rubber

Art. no.: 2400500

**9.-**



## Shower Corner

Smart stainless steel shelf. The shelf is built into the corner of the shower cubicle without the use of screws, but can also be retro fitted in an existing shower enclosure.

Art. no.: 2400600

**63.-**



## Towel hook in silicone

Set with two double hooks. The hooks can hang on the edge of the glass, on the inside or outside, and are practical for towels, brushes, sponges etc.

Available in light or dark grey.

Light grey, Art. no.: 1600013

**11.-**

Dark grey, Art. no.: 1600163

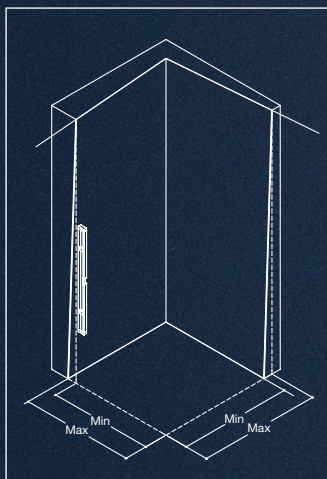
**11.-**

# A perfect result - even on irregular surfaces

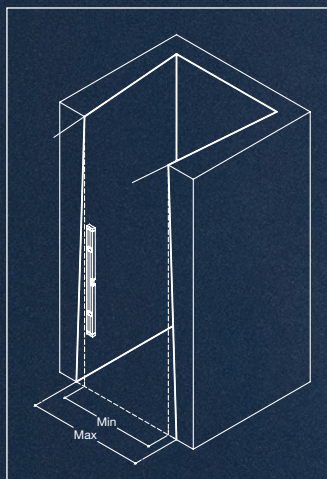
## Uncomplicated and thought-through installation

It is likely, that the wall in your bathroom is not completely plumb. Maybe it has small recesses. Maybe it is slightly angled. However we do not think that this should cause the installation of the shower enclosure to present problems. Therefore, Dansani Shower is designed with a number of technical features that make it easy for the fitter to install your new Dansani Shower solution, even on very irregular surfaces. With plenty of opportunities for fine-tuning, you are certain to get a perfect result, irrespective of the solution you choose.

## Measuring

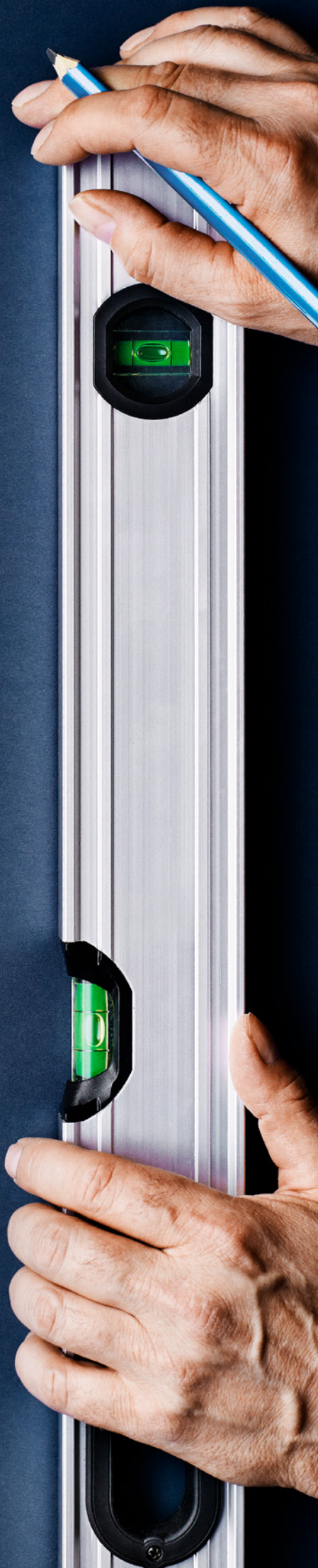


Corner



Recess

Irrespective of whether the wall has an inward or outward angle, the inclination becomes the difference between the minimum and maximum measurements. Use a plumbline to determine the difference along the height of the screen. Before ordering, always check that these measurements correspond to the min./max. measurements of the selected model. Please see the price list.

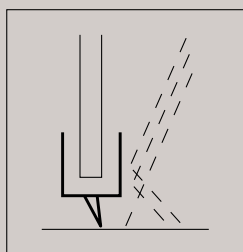


## Reliable and well thought through construction

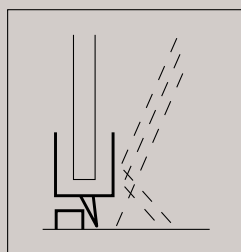
For Dansani functional design is also very much about safety and security. When it comes to everyday use as well as looking years ahead you can trust in the quality of our shower enclosures. That is why we use 6-8 mm toughened safety glass, and all our enclosure solutions are impact tested. Our unique profile that holds the glass securely in place also ensures that the glass fits perfectly. This feature provides a stable and safe showering solution, that will last for many years to come.

### Dansani Match and XXL has been thoroughly tested in accordance with EU-regulations EN14428 in the following three areas:

- 01 Impact test - ensures the enclosure is strong enough to withstand the impact of the user losing their balance and falling against the glass panel.
- 02 Toughening test - to make sure that the glass has been fully toughened, and in the event of the panel shattering the very small pieces of glass will not be sharp (much like e.g. car windows).
- 03 Water test, that makes sure that only very minimal amounts of water droplets can escape during normal use.\*



Rubber seal for shower doors where no floor profile is wanted.



Floor profile kit with rubber seal for showering solutions with shower doors (available to purchase separately).

CE



\* Due to design reasons some models require additional parts to comply with the CE water test. Models with doors require a floor profile kit to comply with this regulation. In case of recess installation the wall profile no. 1 is also needed, see price list page 27.



# We assume responsibility

At Dansani, we assume responsibility and we take good care of our environment and the world that we live in. We've been doing this ever since our company was founded in 1983 and this approach is an integral part of our company DNA.

In 2015, the 17 Sustainable Development Goals were defined as a way of ensuring sustainable development towards 2030. By accepting these goals, the countries of the world are obliged to achieve some ambitious goals that guide both rich and poor countries in our fight to get rid of inequality, handle climate changes, fight poverty and ensure better living conditions in terms of health, education, growth and work for everyone. In this way, these Sustainable Development Goals express our shared, global responsibility and represent the goal of the international community of creating a better world.

#### **Our focus areas are:**

- To develop our products in order to minimise their environmental impact during manufacturing, use and not least disposal
- To design quality products based on proud, Danish handicraft traditions which can be used for many, many years
- To use raw materials, water and energy in an efficient way in order to minimise our impact on the environment
- To limit emissions, waste and discharge stemming from our activities
- To maintain high levels of safety standards towards our employees and foster responsible environmental policies
- To improve our environmentally-based work in cooperation with our suppliers, customers and other partners

So, when you buy a Dansani product, you can rest assured that we actively assume responsibility and focus on the world that we live in.  
Find out more about our initiatives by visiting [www.dansani.co.uk](http://www.dansani.co.uk)



DANSANI IS COMMITTED TO SUPPORTING THE UN'S GLOBAL GOALS. FOR MORE DETAIL PLEASE VISIT [DANSANI.CO.UK](http://DANSANI.CO.UK)

# Our Philosophy

Your bathroom is your personal breathing space, and no one can create it better than you. With Dansani, it is easy and inspiring to furnish your bathroom with functional and well thought-out solutions that adapt to the needs of the individual.

## Danish design

The idea behind Danish design embraces functionality, simplicity, and naturalness, and is expressed in a timeless design. This is the starting point for every product embraced by the Dansani brand.

## Functionality

Our products should be easy and comfortable to use, as well as being able to adapt to the size of the space through smart functions that are practical yet durable.

## Craftsmanship

Both design and function must be supported by durable craftsmanship. The excellent cabinetry finish is consistent in all our products, evidenced by gorgeous materials and sustainable solutions.

## Sustainability

At Dansani, being environmentally responsible is a given. Therefore, we have implemented several measures to reduce our environmental impact. We also focus on our own work environment, encouraging our suppliers to offer ethically responsible working conditions.



Dansani Ltd  
7 Mermaid Walk  
The Waterfront  
Brighton Marina  
East Sussex  
BN2 5WA GB  
T. +44 (0)800 58 71 725  
F. +44 (0)800 58 71 726  
mail@dansani.co.uk  
dansani.co.uk

2022 GB



DANSANI IS COMMITTED TO SUPPORTING THE UN'S GLOBAL GOALS. FOR MORE DETAIL PLEASE VISIT [DANSANI.CO.UK](https://www.dansani.co.uk)

